

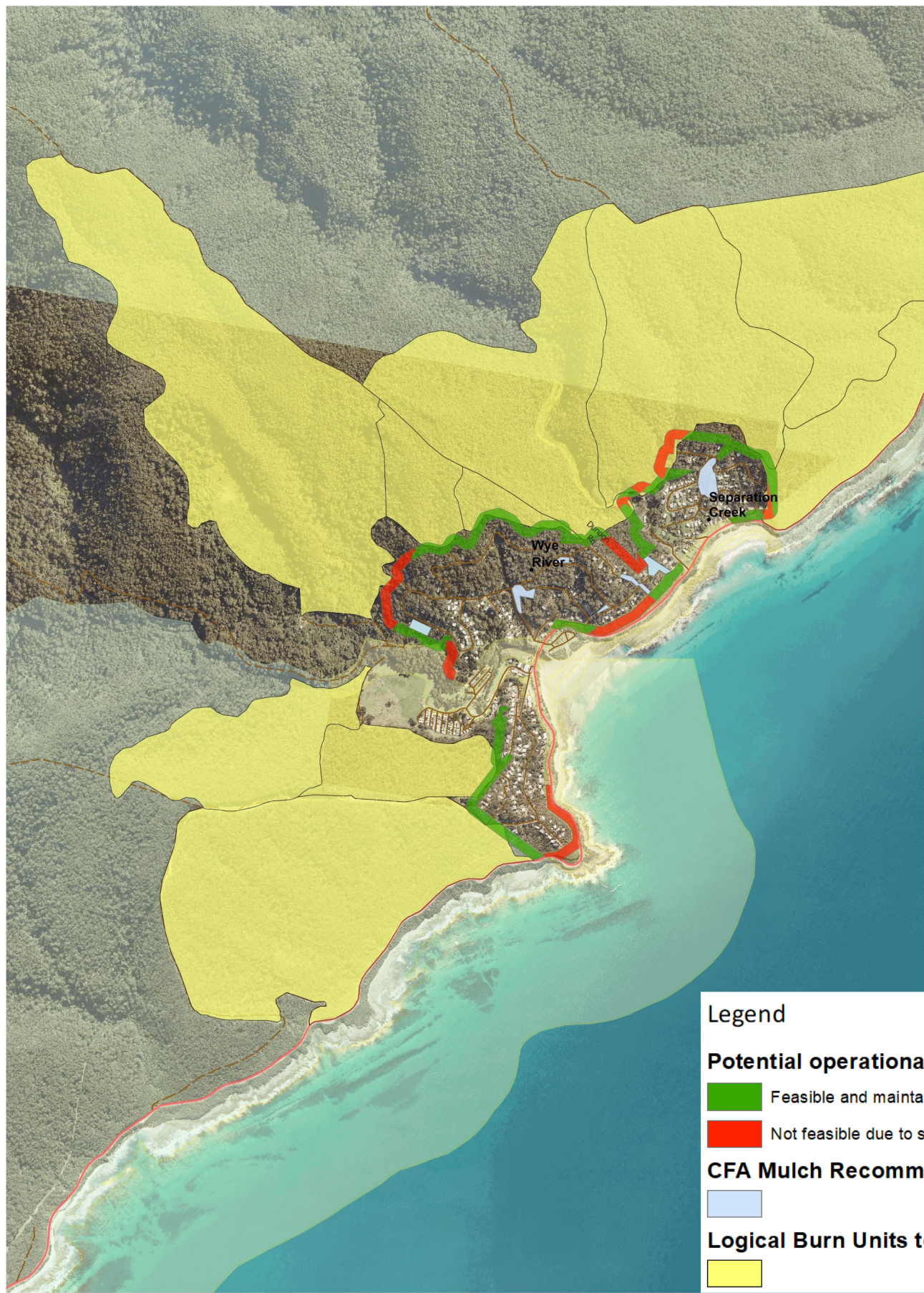
# Bushfire Fuel Management Options

## Wye River & Separation Creek

### Our Task:

- To investigate Fuel Management options for the Community and collectively agree to a Bushfire Management Plan by:
- Identifying logical Fuel Reduction burn units and strategic fuel breaks on Private & Public land, that will contribute to the most effective reduction of risk.
  - Achieving agreement of a Bushfire Fuel Management Plan by May 2019, to enable implementation from Spring 2019.

Map 1. Logical Burn Units for investigation on Private & Public land



Map 2. Proposed Strategic Fuel Breaks on Private & Public land



Establish and maintain Strategic Fuel Breaks on private & public land around the town boundary



Plan and deliver small, medium and large burns on private & public land to create an overall fuel reduction



Establish and maintain Strategic Fuel Breaks on key fire access tracks



Mulching in and around town to provide resilience and hardening of critical town assets.





# Bushfire Fuel Management Options

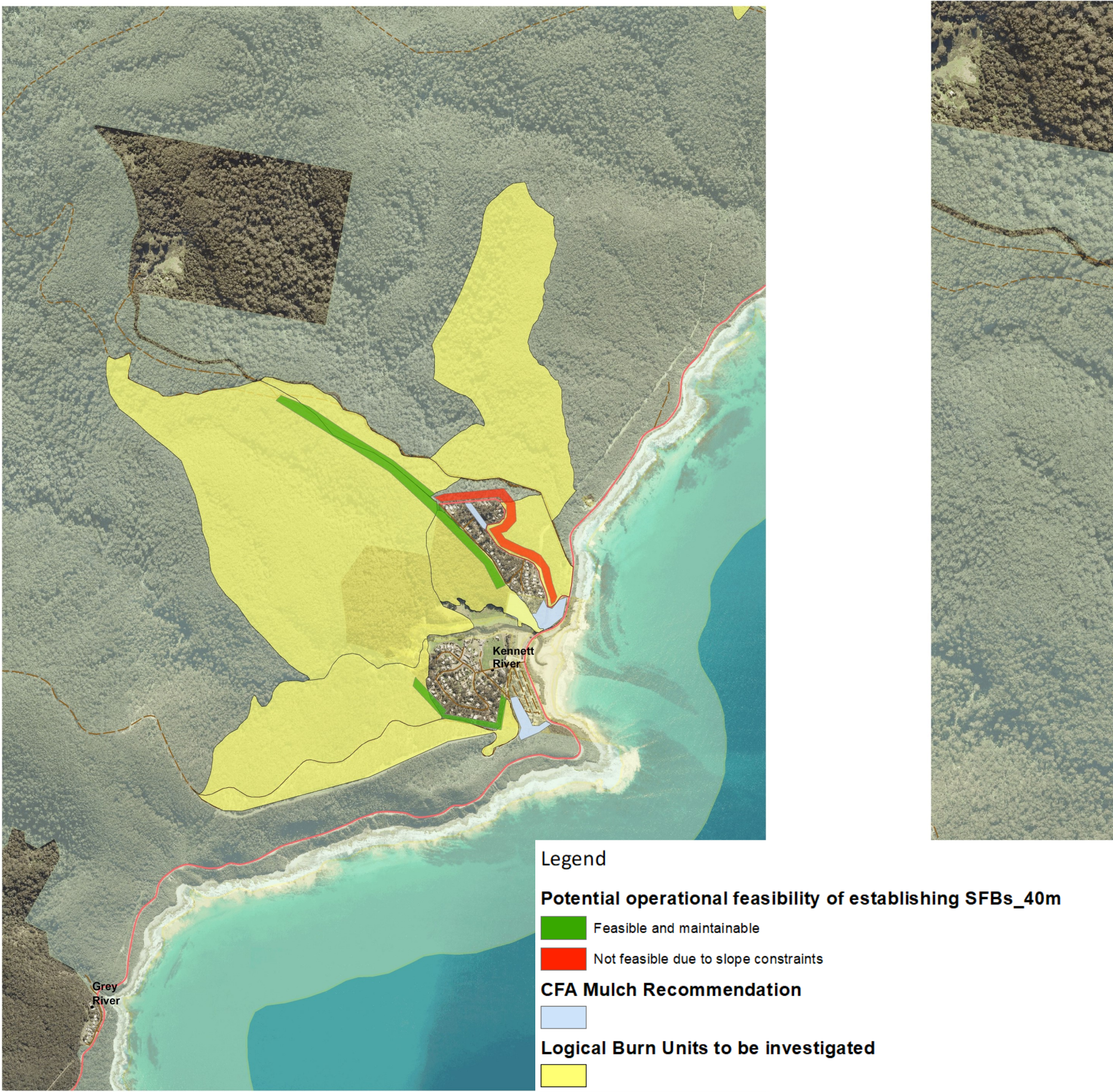
## Kennett River

### Our Task:

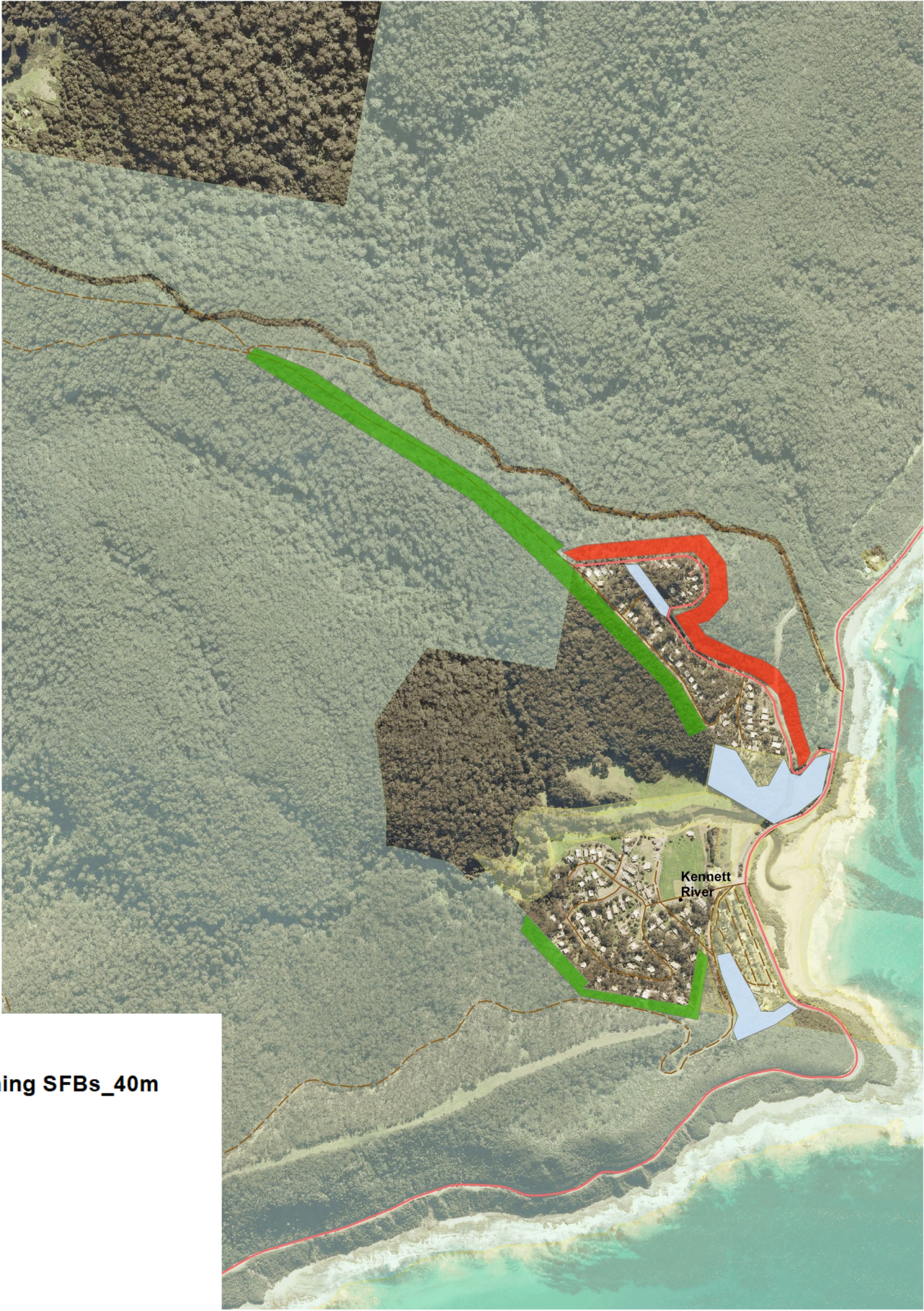
To investigate Fuel Management options for the Community and collectively agree to a Bushfire Management Plan by:

- Identifying logical Fuel Reduction burn units and strategic fuel breaks on Private & Public land that will contribute to the most effective reduction of risk.
- Achieving agreement of a Bushfire Fuel Management Plan by May 2019, to enable implementation from Spring 2019.

Map 1. Logical Burn Units for investigation on Private & Public land



Map 2. Proposed Strategic Fuel Breaks



Establish and maintain Strategic Fuel Breaks on private & public land around the town boundary



Plan and deliver small, medium and large burns on private & public land to create an overall fuel reduction



Establish and maintain Strategic Fuel Breaks on key fire access tracks



Mulching in and around town to provide resilience and hardening of critical town assets.

