

Colac Memorial Square Playspace

Draft - Landscape Concept Design

May 2020

Prepared for Colac Otway Shire

INTRODUCTION

Located in Colac's Central Business District, Memorial Square is a 2 Ha. regional parcel of public open space. The Memorial Square serves a dual function of important green passive open space in the Colac CBD as well as the important historical and ceremonial functions, centred around the war memorial. The centrally located sandstone monument, commemorating WW1 is the prominent architectural feature of the square and commands its formal park surrounds. The square also features many mature Elm trees, providing large canopies and natural shade.

Following the preparation of the Memorial Square masterplan (2018), the existing playspace was identified as a priority project for revitalisation in the square. Council has been successful in securing State and Federal funding for the playspace upgrade.

In late 2019, Tract was engaged by Colac Otway Shire to undertake a design and documentation process for the new Memorial Square Playspace. This report outlines the design process of site analysis through to concept design that has been undertaken to date and includes a draft Concept plan for review and feedback from the community.



WAR MEMORIAL



EXISTING ELM TREES












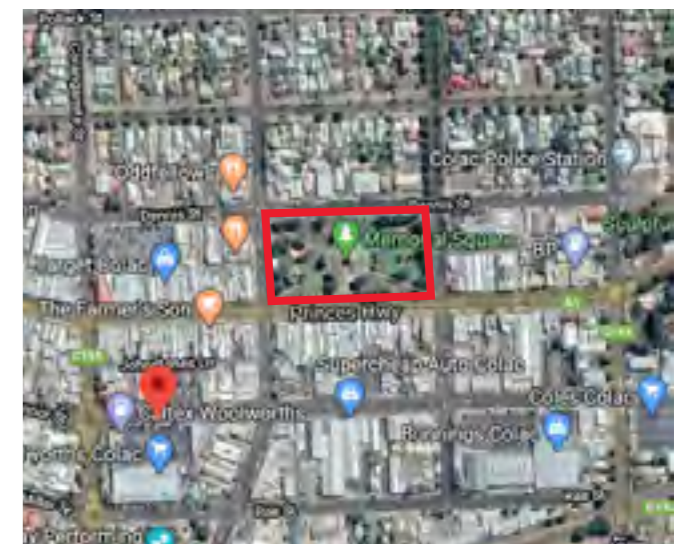
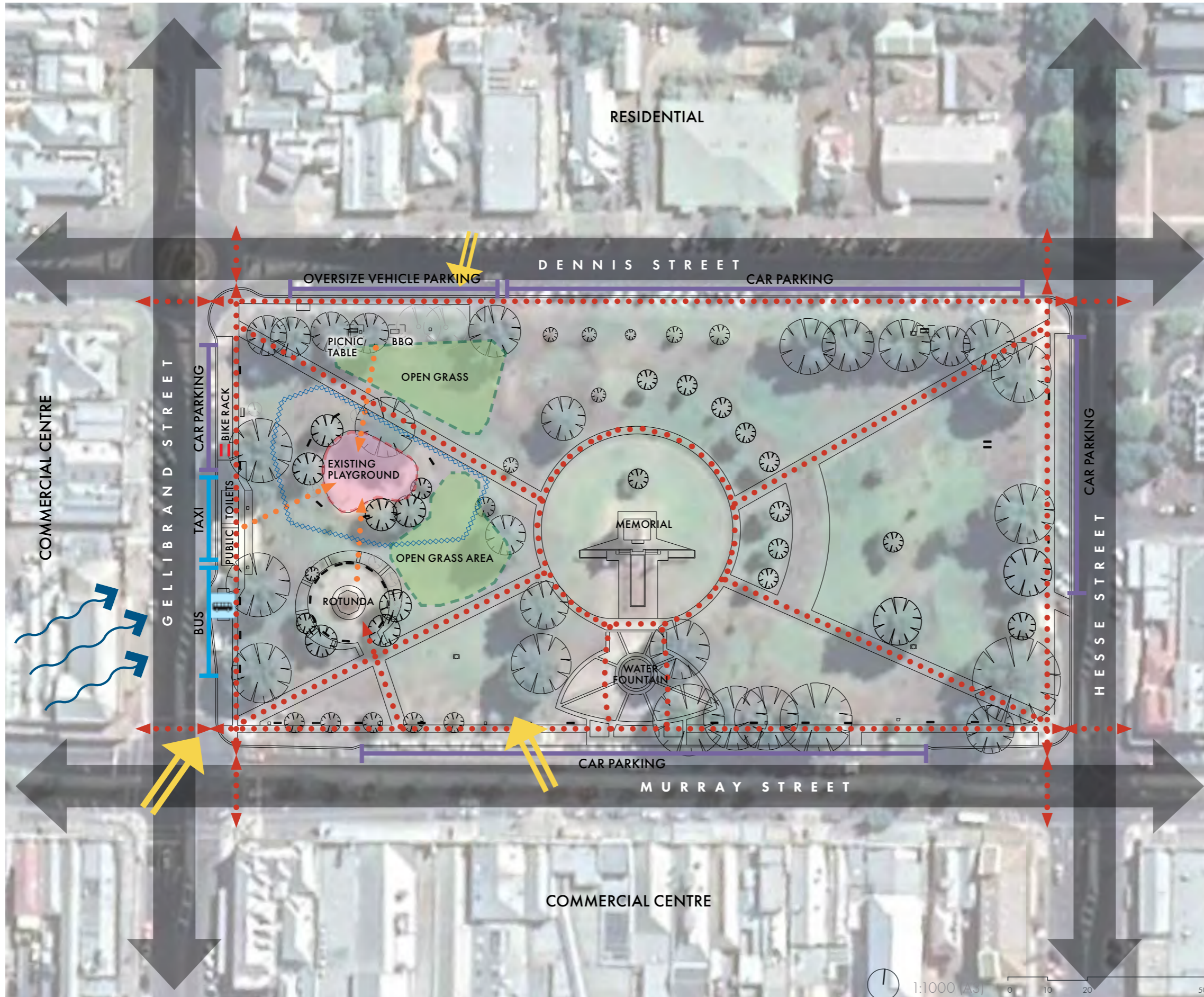
MEMORIAL SQUARE EXISTING SITE PHOTOS

SITE ANALYSIS

Access & Circulation

LEGEND

-  Prominent view to playground from street
-  Existing Bike racks
-  Bus stop
-  Bus/Taxi Zone
-  On street car parking
-  Existing Pedestrian formal path network
-  Existing Pedestrian informal desire lines
-  Proposed zone for new Playspace
-  Prevailing winds



SUN PATH

DENNIS STREET

GELLIBRAND STREET

MURRAY STREET

SITE ANALYSIS

Existing vegetation

LEGEND



Ulmus x hollandica
Dutch Elm



Pyrus species



Ulmus procera
English Elm
(newly planted)



Tree Protection Zone
Based on Arborist report 2018 provided by Colac Otway Shire Council



Formal hedges & groundcover planting

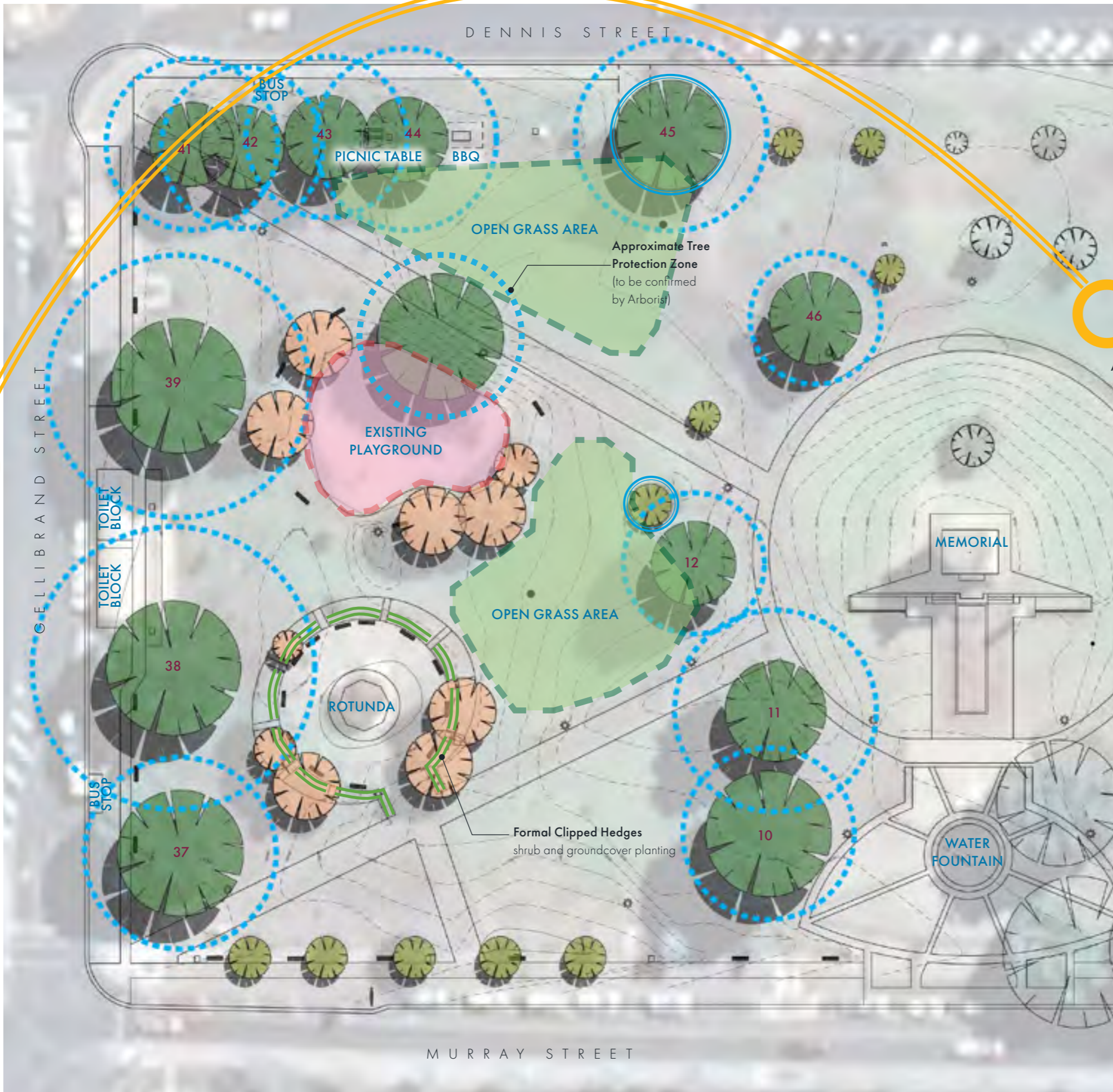
1:500 (A3) 0 5 10 20



PM












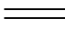




AM

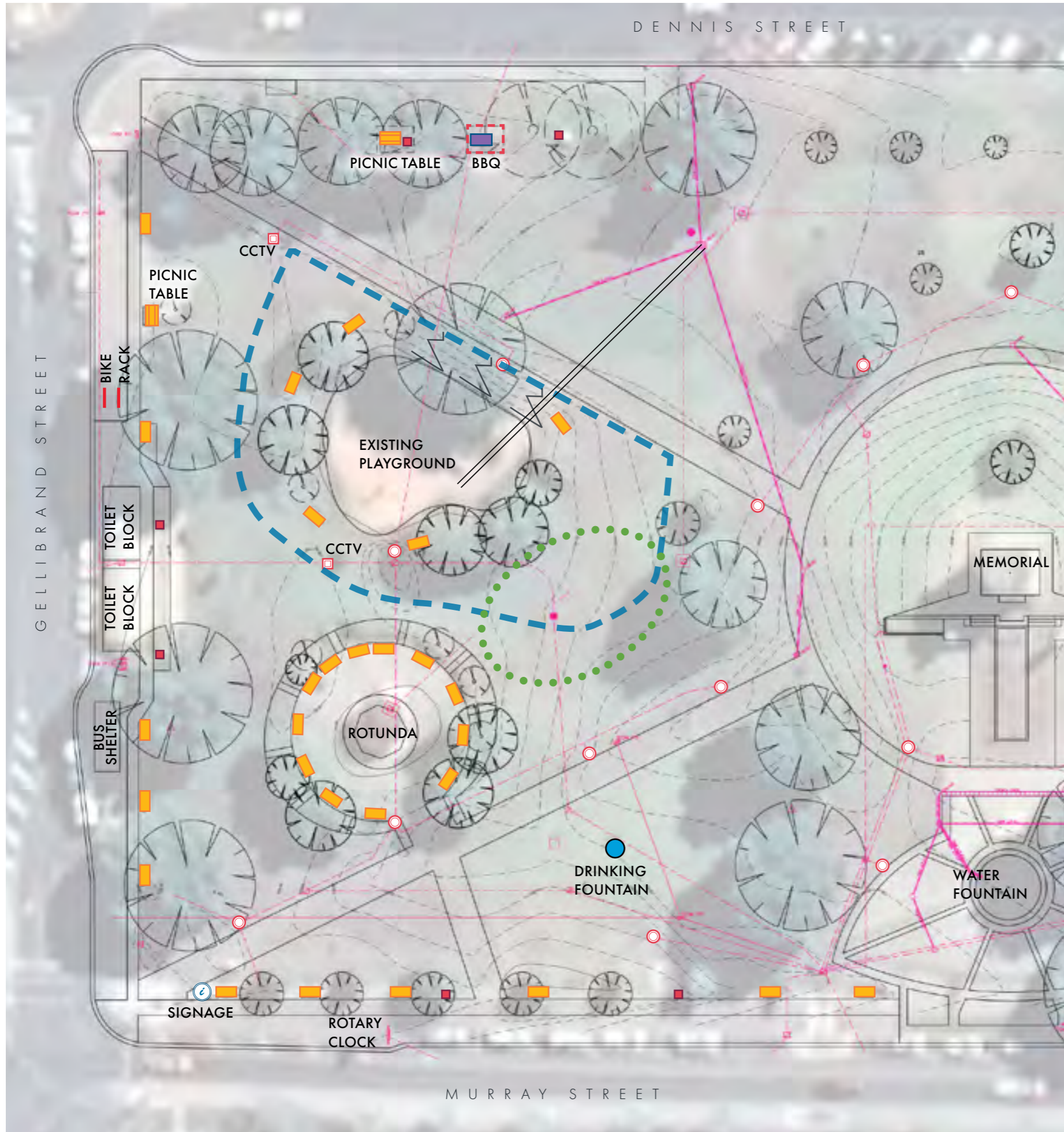


SITE ANALYSIS

Furniture & Amenities

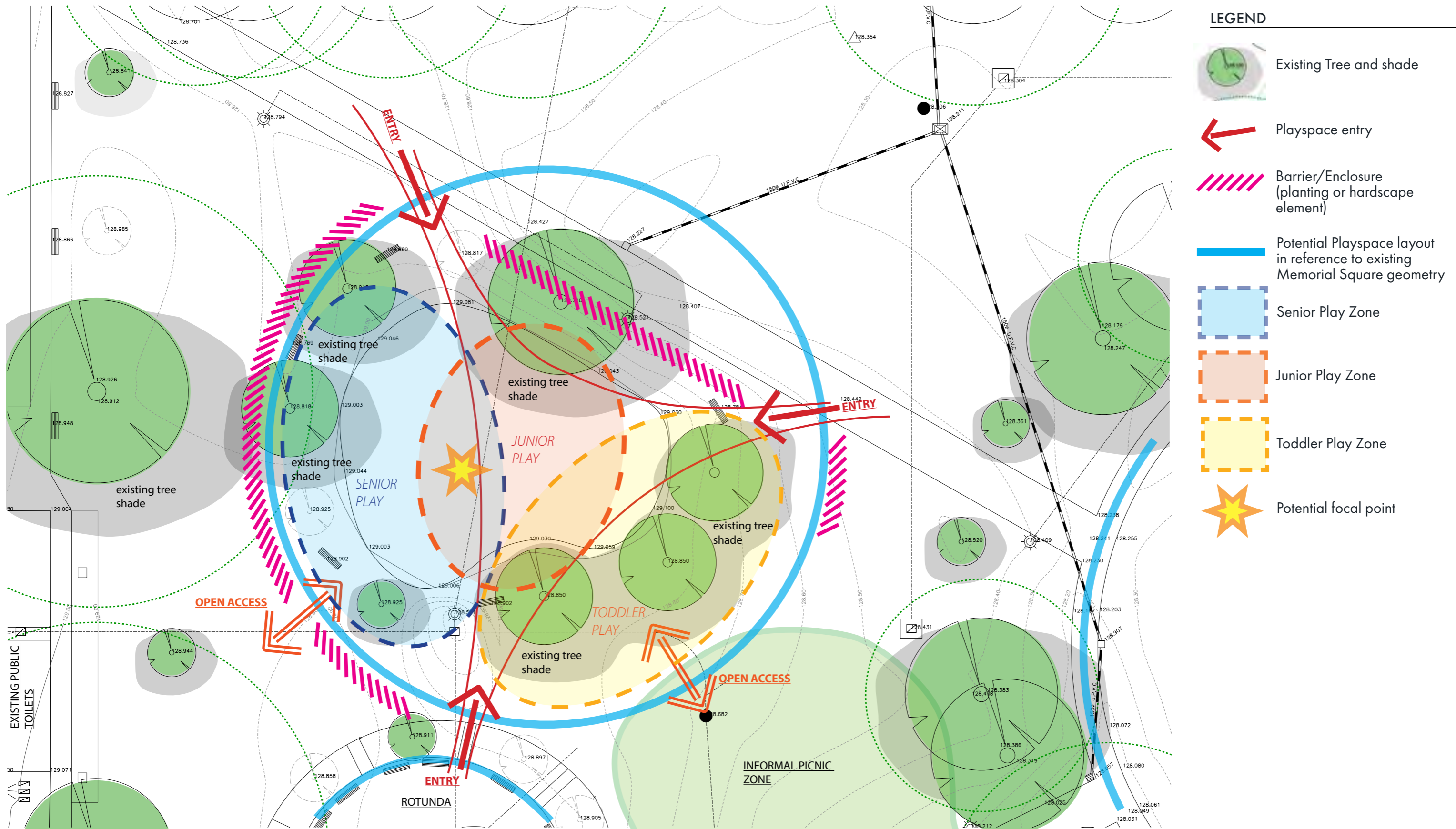
LEGEND

-  Bench seating
-  Picnic setting
-  BBQ
-  Bin
-  Bike racks
-  Potential extent of new Playspace
-  Informal Picnic zone
-  Drinking fountain
-  Grade to edge of existing playground (not DDA compliant)
-  Possible future stormwater connection for improved drainage
-  Shelter
-  Light pole
-  Signage
-  Existing services & Utilities



1:500 (A3) 0 5 10 20

PROPOSED FUNCTIONAL LAYOUT PLAN



1:200 (A3) 0 2 4 10

CONTEXT & THEME EXPLORATION

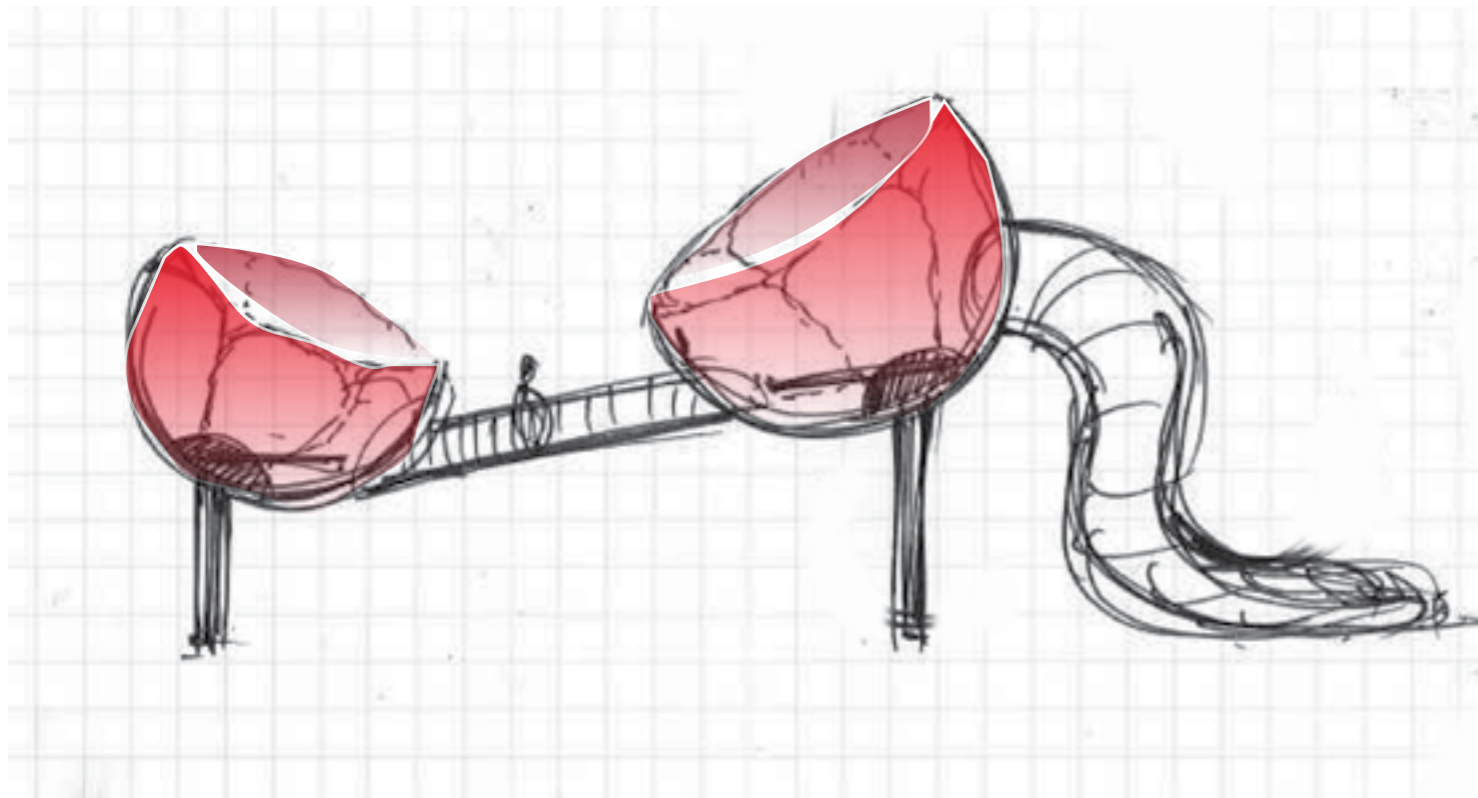
Landscape Design Response

The Memorial Square's prominent features are the WW1 memorial monument surrounded by open lawn and impressive mature Elm trees. The monument and surrounding path network governs the overall formal design of the Square and the new playspace is designed to respect the hierarchy and context of its site.

In appreciation of the site, the theme of remembrance and reflection is proposed for the playspace. The theme is explored and represented through design forms and the colour and materials palette. The red poppy emblem is an international symbol of remembrance for the fallen servicemen and women. The playspace design features the poppy motif in the custom play structure design and use of colours. The materials palette references reflective surfaces and natural, durable materials that sit easily with the existing materials used around the Square.

The circular footprint of the playspace design reflects the existing geometry and formal path network of the memorial square. Proposed perimeter planting provides a visual and physical barrier to enclosing the playspace to the nearby roads and visually enclosing the playspace.

Maximising comfort, safety and inclusive play opportunities are the key factors influencing the design. This includes retaining existing mature trees for shade and planting supplementary trees for future addition shade. Considering circulation, sightlines, access, surface materials, seating opportunities and of course, a sense of fun, exploration and adventure for all people visiting the space.



DRAFT CONCEPT PLAN

LEGEND

- 1 Perimeter trike concrete track (1.5m wide)
- 2 Feature custom play structure
- 3 Agility climbing structure (senior play)
- 4 Swings area
- 5 Todler play house
- 6 Sand play
- 7 Sensory & Music Play
- 8 Carousel
- 9 Boulder steppers
- 10 Seating
- 11 Rubberised soft fall surfacing
- 12 Mulch sofffall
- 13 Gravel paving
- 14 Existing asphalt footpath with bluestone edging
- 15 Proposed deciduous trees
- 16 Existing trees to be retained
- 17 Proposed Garden bed
- 18 Planting barrier (i.e. clipped hedge) to the road interfaces of the playspace
- 19 Open access to the adjacent open lawn area
- 20 Existing light poles to remain
- 21 Drinking fountain
- 22 Picnic setting

-  Garden bed mounding
-  Tree Protection Zone
-  Existing Playground



ROTUNDA

1:200 (A3)

0 2 4 10

PLAY EQUIPMENT



2 Custom play structure



5 Todler play house



3 Agility climbing structure (senior play)



6 Sand play



4 Swings area



9 Rock Boulder steppers

Babel drum



7 Sensory & Music Play

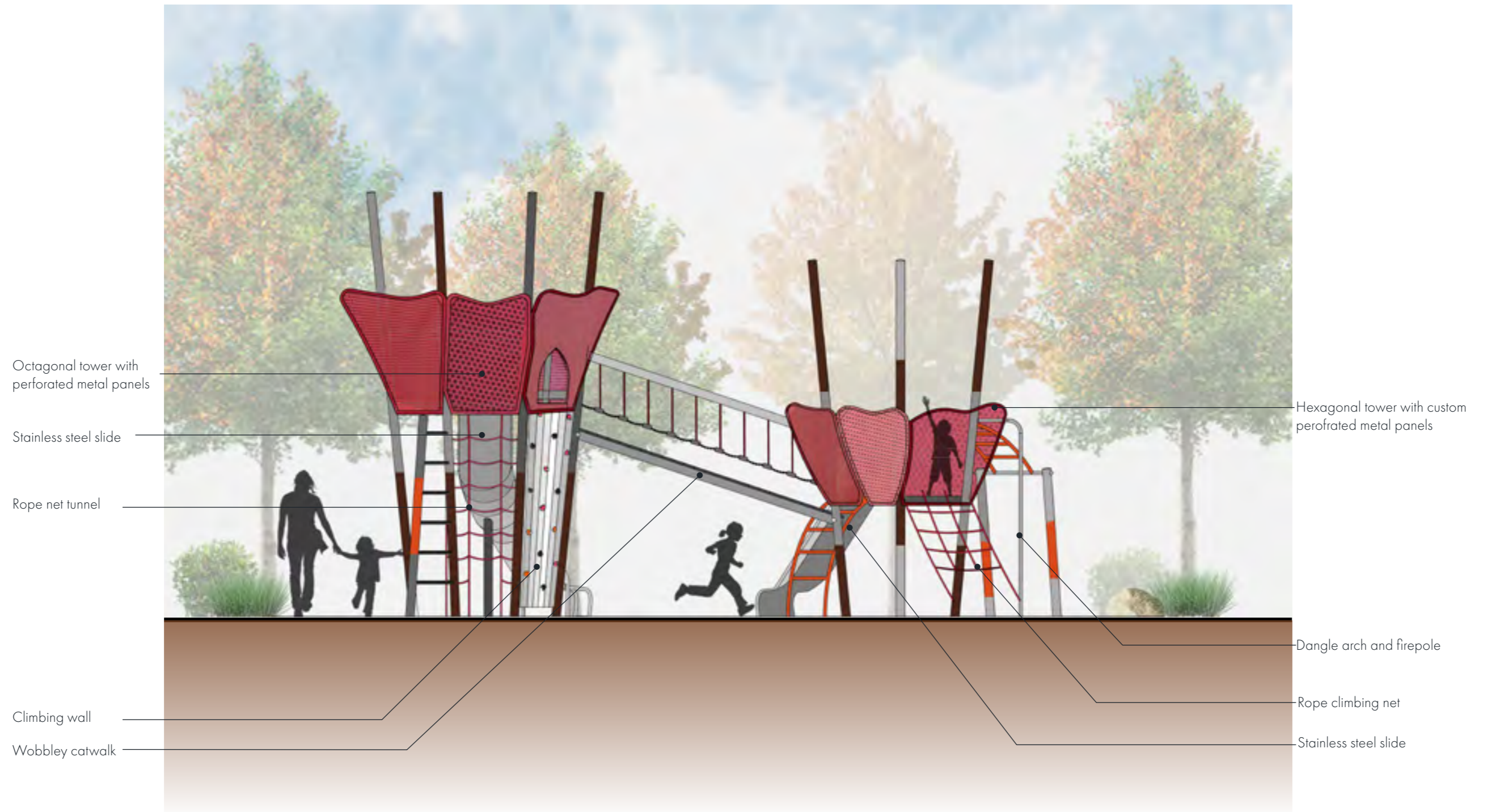
Chimes



Cajon



8 Carousel



Octagonal tower with perforated metal panels

Stainless steel slide

Rope net tunnel

Climbing wall

Wobbly catwalk

Hexagonal tower with custom perforated metal panels

Dangle arch and firepole

Rope climbing net

Stainless steel slide

PLAY STRUCTURE ELEVATION

1:50 (A3) 0 0.5 1 2

Material Palette

The playspace materials palette draws from the existing Memorial Square context. Elements include coloured concrete footpaths, rubber soft fall surfacing, locally sourced rock boulders and cut stone and metal play equipment.

surface finishes



Coloured concrete paving



Rubberised soft fall



Soft fall Mulch



Granitic Gravel



Sand

walls and edges



Cut Bluestone edging



Gabion and metal seating



Rock boulder edging



Hoop planting edge

play equipment



Stainless steel
(facing South)



Powdercoated steel



Perforated metal

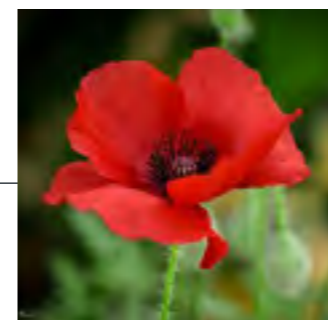


Rope

Colour Palette

The playspace colour palette are based on Poppy flower inspiration with highlights of red and orange and secondary accents of black and brown.

colour



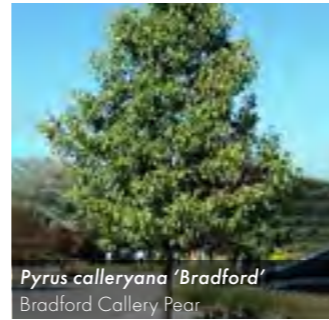
Planting Design

Design Intent

The planting concept consist of a variety of native plants and exotics to suit the formal and urban context of the Memorial Square, the climatic conditions, provide seasonal interest and withstand the high intensity of use of a playground space.

Planting Palette

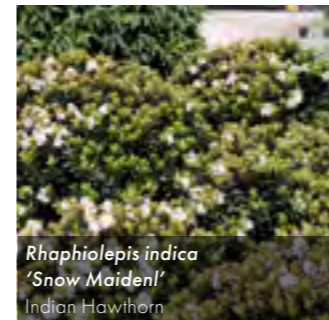
Latin Name	Common Name	HxW at maturity
Trees		
<i>Pyrus calleryana</i> 'Bradford'	Bradford Callery Pear	12 x 9m
Hedges		
<i>Rosemary officinalis</i> 'Tuscan Blue'	Tuscan Rosemary	1.5 x 0.8m
<i>Murraya paniculata</i>	Orange Jessamine	2 x 2m
<i>Westringia fruticosa</i> 'Seafoam Swell'	Coastal Rosemary	1 x 1m
Shrubs, Groundcovers, Grasses		
<i>Anigozanthos</i> 'Amber Velvet'	Kangaroo Paw	1 x 1m
<i>Callistemon viminalis</i> 'Little John'	Dwarf Bottlebrush	1 x 1.5m
<i>Correa alba</i>	White Correa	1.5 x 1.5-2.5m
<i>Chrysocephalum apiculatum</i>	Common Everlaster	0.2 x 0.5m
<i>Daphne odora</i>	Winter Daphne	1 x 1.5m
<i>Doryanthes excelsa</i>	Gynea Lily	1.5 x 2m
<i>Diets grandiflora</i>	Butterfly Iris	0.8 x 0.8m
<i>Gazania</i> 'Daybreak yellow'	Daybreak Gazania	0.3 x 0.3m
<i>Grevillea</i> 'Fire Cracker'	Grevillea Fire Cracker	0.5 x 0.8m
<i>Juniperus conferta</i>	Shore Juniper	0.5 x 3m
<i>Kniphofia</i> 'Winter Cheer'	Red Hot Poker	1 x 1m
<i>Leptospermum laevigatum</i> 'fore shore'	Fore Shore	0.5 x 0.5m
<i>Lomandra</i> 'Tanika'	Fine-Leaved Lomandra	0.5-0.7 x 0.7m
<i>Pennisetum alopecuroides</i> 'Nafray'	Swamp Foxtail Grass	0.6 x 0.6m
<i>Poa labillardieri</i>	Common Tussock Grass	0.8-1.2 x 0.8m
<i>Poa morrisii</i>	Velvet Tussock Grass	0.25 x 0.5-0.9m
Annuals		
<i>Papaver rhoeas</i> 'Flanders Red'	Flanders Red Poppy	0.4 x 0.2m



Pyrus calleryana 'Bradford'
Bradford Callery Pear



Murraya paniculata
Orange Jessamine



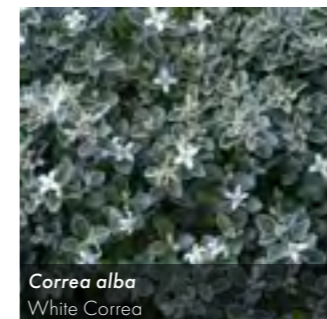
Raphiolepis indica
'Snow Maiden'
Indian Hawthorn



Anigozanthos flavidus
Kangaroo Paw



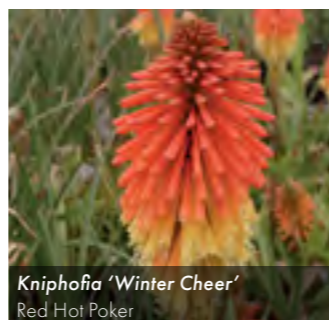
Callistemon viminalis 'Little John'
Dwarf Bottlebrush



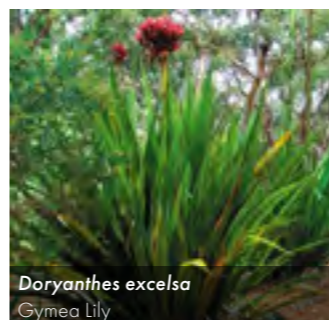
Correa alba
White Correa



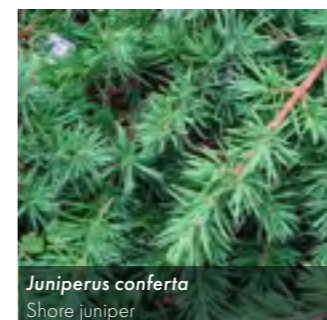
Leptospermum 'Fore Shore'
Fore Shore Tea Tree



Kniphofia 'Winter Cheer'
Red Hot Poker



Doryanthes excelsa
Gynea Lily



Juniperus conferta
Shore juniper



Chrysocephalum apiculatum
Common Everlaster



Papaver rhoeas
Flanders Red



Pennisetum alopecuroides
Nafray Fountain Grass (non-invasive)



Lomandra 'Tanika'
Fine-Leaf Lomandra



Rosmarinus officinalis
Rosemary



Phormium tenax 'Atropurpureum'
New Zealand Flax



Westringia fruticosa
'Seafoam Swell'
Coastal Rosemary



Contact Tract

Geelong
39 Gheringhap Street, Geelong
VIC, Australia 3220
(03) 5221 0105
geelong@tract.net.au