



Newsletter

Wye River and Separation Creek Renewal

11 DECEMBER 2017

This newsletter is issued by Colac Otway Shire to provide the community key updates following the fire.

Fire Danger Period is declared for Colac Otway Shire

The Country Fire Authority (CFA) officially declared the start of the Fire Danger Period (FDP) for the Colac Otway Shire on Monday 4 December 2017, which will most likely run through until May 2018.

CFA declares the FDP for each municipality (shire or council) at different times in the lead up to the fire season. It depends on the amount of rain, grassland curing rate and other local conditions. Once the Fire Danger Period has been declared, fire restrictions come into force. This means you cannot light a fire in the open air unless you comply with certain requirements. **As such, you must now have a permit to burn-off during the FDP.** Council issues these permits through its Emergency Management Unit.

In line with the FDP, Council has begun its annual Fire Prevention Inspection Program to assess potential fire hazards on all properties. Where a potential fire hazard is found, property owners or occupiers will receive a Fire Prevention Notice detailing the steps needed to reduce the hazard and potential loss of life and property. Failure to comply can result in significant penalties.

More information on the FDP and applications to undertake a burn during the FDP can be found at <http://www.colacotway.vic.gov.au/My-property/Fire-and-emergencies/Burning-off>. Further information regarding fire planning and preparations can be found at <http://www.colacotway.vic.gov.au/My-property/Fire-and-emergencies/Getting-fire-ready>.

If you have any further questions please call Council's Fire Awareness Officer, Tristan Crews on 5232 9400 with any questions.



Rebuilding progress update

It is only 18 months since the first application for planning permit was lodged with Council following the fires, and five homes have been completed, with a further 14 under construction, many of them nearing completion.

Colac Otway Shire has now issued 41 planning permits for replacement houses under the streamlined controls together with six pre-existing permits, which allow rebuilding, a total of 47 approvals.

In addition, eight planning applications for replacement houses are currently being processed. When all current planning permit applications for replacement dwellings are determined there will be 55 of the 109 destroyed dwelling with a planning permit that allows rebuilding. That's 51 per cent of fire-affected dwellings.

Given the difficult and complex regulatory processes, this is a credit to property owners.

Fee waivers ending 31 December 2017

All permit fees for development application processes related to rebuilding houses destroyed in the Christmas Day 2015 fire have been waived since the fires. This has saved the property owners over \$100,000 in permit fees.

As previously advertised, this waiver will cease on 31 December 2017, coinciding with the end of State Government funding for the dedicated One Stop Shop team.



Any property owners considering applying for permits should take the opportunity to do so now while fees are being waived. After this time, any applications or consents sought from Council will attract the normal fees.

Communications update

In February 2018, Council communications related to the bushfire renewal will reduce, transitioning to bi-monthly newsletter and project-specific updates. The last monthly bushfire renewal newsletter will be published at the end of January/early February next year followed by bi-monthly newsletters in April and June.

This change is in line with major works undertaken by VicRoads and DELWP coming to a conclusion, and the end of funding from the State Government to support a regular newsletter. We will continue to inform the community about major projects such as the Stormwater Management System via project-related emails and updates.

Yvette Hill is concluding her Bushfire Community Development Officer role at the end of December 2017 and returning to her substantive role in customer service. Thank you very much to Yvette for all her hard work. We will shortly be updating the Colac Otway Shire Community Service Charter with a revised list of community contacts publishing this at: <http://www.colacotway.vic.gov.au/My-property/Fire-and-emergencies/WyeSep-Connect>

Stormwater Management System

Thank you to everyone who provided feedback through several rounds of community consultation on the design of the stormwater drainage system for Wye River and Separation Creek this year.

As outlined in the November newsletter, the project has now moved into the tender process, with works separated into three contracts: 1) pits and pipes, 2) table drains, driveway culverts and ancillary works, and 3) revegetation and reinstatement.

Contracts 1 and 2 were out to tender from late October to late November. Unfortunately Council only received one tender for each of proposed contracts. Given the limited tender response and the fact that each of the tenders was above the Engineer's Estimate for the works Council does not

believe it would be able to demonstrate best value to the community. As a result Council will call tenders again in the week commencing 11 December, with a view to taking a report to the February 2018 meeting of Council to award contracts.

At this stage, we expect construction to commence in February-March and be completed by the end of September 2018.

The community will be informed on the project's progress via the WyeSep webpage and Facebook. Coordination with property owners will be required for the following construction works:

- **Construction of Driveway Culverts**

The appointed contractor will send a letter to the relevant owners/residents two to three weeks before the proposed works. There will be an opportunity to respond to the contractor for any special requests. Every effort will be made to limit the time that your property access may be affected, to a maximum of two days.

- **Construction of stormwater drainage in easements and private properties**

Council will require access to construct stormwater pipes and pits on some private properties. We will send a letter to the relevant property owners to obtain agreement in the form of an Access Deed for construction. The appointed contractor will also send a letter to the relevant owners/residents two to three weeks before the proposed works. There will be an opportunity to respond to the contractor for any special requests.

Stanway Drive remediation update

Remediation works at Stanway Drive will be undertaken on the high side embankment and creek bank. We will hold a community comment period online in mid-December about elements of the draft works (timing to be advised by Facebook and the website).

The design is scheduled for completion by the end of December. At this stage, we expect construction to commence in late January 2018, after Australia Day, and be completed by the end of June 2018.

Please note that the gates along Stanway Drive will be closed during the peak holiday period, meaning access will temporarily not be available from Iluka Avenue to Stanway Drive. The gates will be opened



in the case of an emergency. The link will then temporarily operate as a one-way road from Iluka Avenue to Stanway Drive when the gates are opened.



Stanway Drive

Permits and traffic management required for all builders and contractors

As we approach the busy holiday period, please keep in mind that all non-council contractors, sub-contractors and builders working in Wye River and Separation Creek must have a permit for any works requiring traffic control and/or road closure.

Traffic management controls must be in place for any short or long-term road closures or delays. This is in accordance with the Construction, Traffic and Environment Management Plan.

A 'Non Utility Minor Works within Municipal Road Reserves' form, found at <http://www.colacotway.vic.gov.au/Council-the-shire/Permits-applications-forms/Works-on-Roads> is required to be submitted and approved by Council before construction can commence. To assist in arranging permits for road closures and/or traffic management plans, please contact Damien Burton on Mobile 0427 092 254 or Damien.burton@colacotway.vic.gov.au or Boyd Williams on Boyd.Williams@colacotway.vic.gov.au

Traffic management and signage

The Construction, Traffic and Environment Management Plan has been amended to include making Iluka Avenue one way and Riverside Drive two way. The amended plans are at: <http://www.colacotway.vic.gov.au/Council-the-shire/Reports-strategies-plans/Wye-River-and-Separation-Creek-Recovery-Reports>

In accordance with the Construction, Traffic and Environment Management Plan, Council will be installing additional traffic signage in Wye River and Separation Creek in December. New signage will include speed limit signs; 'no stopping' signs, and 'give way' signs. The signs will be installed before Christmas. As the high season approaches, Council will be monitoring adherence to traffic regulations to ensure the safety of visitors and residents.

Hazardous tree removal and pruning

Council has again engaged an independent Arborist to undertake an assessment of the condition of trees on Council controlled land. This routine inspection is part of our ongoing monitoring and management of trees in Wye River and Separation Creek.

The Arborist's report will be released shortly, and we will prune and remove dead wood from trees based on the Arborist's recommendations. The report includes the trees that suspected as recently poisoned within Council road reserve. This work will be completed before Christmas.

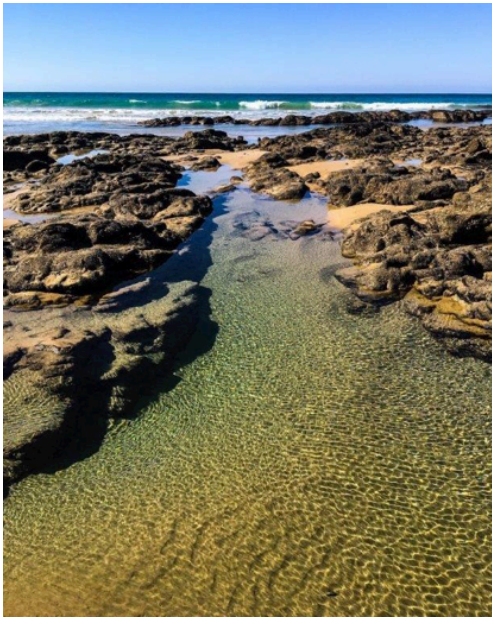
Council's objective to retain as many trees as possible has not changed. We will continue to monitor the safety of trees on Council land on an ongoing basis.



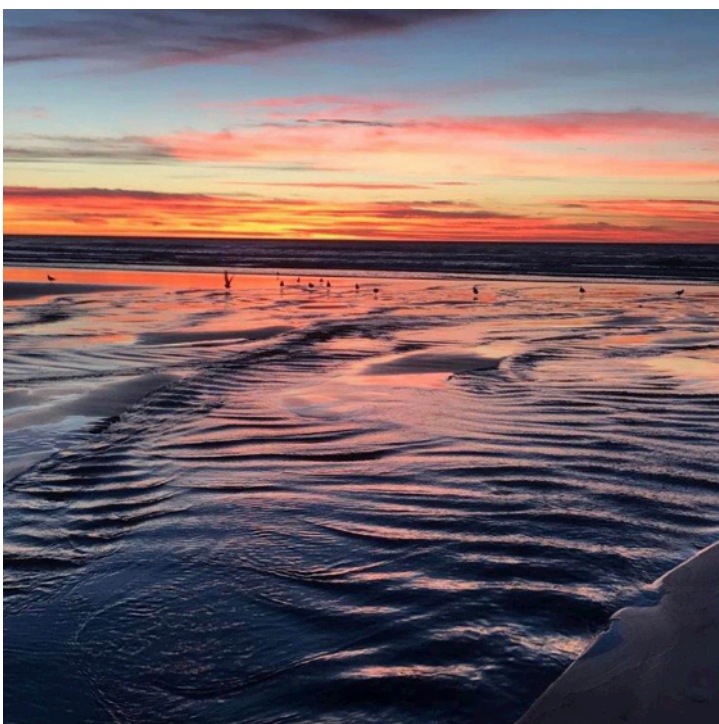


Wye I love

There was a fabulous response to the WyeWinter Photo Competition with over 40 entries. The judges have finally decided on our winners and they will each receive a voucher for either the Wye General or Wye Beach Hotel. Congratulations and first prize goes to **Lisa Luscombe for Rockpool**. This image was chosen due to its great lighting, composition and colour.



Second prize and congrats goes to by **Simon Wilkinson** for Sunrise with seagulls.

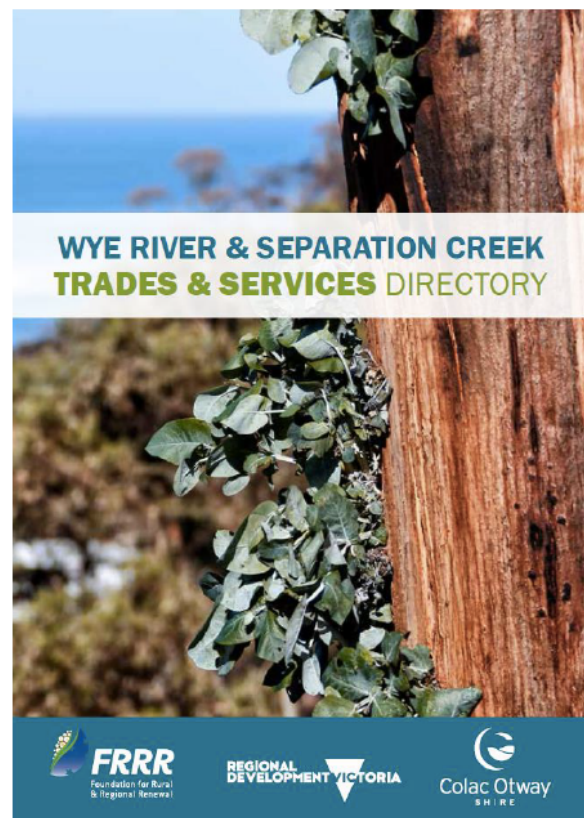


Below is an image of the judges making their difficult decision in the Wye I Love competition!



Trades and Services Directory

The Trades and Services Directory is complete and will soon be delivered to all property owners of Wye Sep and Kennett and also sent through Bushfire Recovery Email. Copies will be available locally at the General Store.





Wildlife Walk funding

The Kennett River Association has been successful in its application for \$20,000 through the Building Stronger Communities Fund for a Wildlife Walk alongside the river in Kennett River. In addition to this, the association had already secured \$10,000 through the Destination Action Plan funding which came out of the Bushfire & Economic Recovery Fund.

We will continue to discuss this Wildlife Walk at KRA meetings, however if you have a particular interest in this walk and have the time to be part of a small working group to help get this Wildlife Walk off the ground, please email Corrina Dichiera at corrinad@bigpond.com

WSKRA Inc. (Community Resilience Committee) Update

The major activity for WSKRA over the past month has been drafting an update to the Renewal Plan to ensure that it remains current and relevant.

One of the main changes to the Renewal Plan for 2018-2019 will be the inclusion of Kennett River and issues facing people there. Work has commenced on almost all initiatives in the current Renewal Plan and this work is ongoing, for example work on the drainage scheme and re-vegetation.

However for some initiatives the circumstances have changed and a different approach is required, for example the management of fuel on town boundaries. New issues have emerged and need to be considered, such as support for the health and return of the koala population. Major opportunities have also arisen; such as provision of \$3.4m from the Victorian Government to assist the community and the environment recover from the fire.

The Draft Renewal Plan for Wye Sep and Kennett 2018-2019 will be available for consideration and comment by the community towards the end of December 2017. There will be an opportunity for community discussion of the draft plan at the Community Forum held by the Wye River and Separation Creek Progress Association on the 21st January 2018.

In the last month the WSKRA Business and Tourism Work Group has been advocating for funding for potential walks in our area, consistent with the current Renewal Plan. Linked walks have the

potential to support low impact tourism, holiday rentals and community wellbeing. We are hopeful of a positive outcome. Pictured is a view from one possible route between Jamieson River and Wye River.



The WSKRA Flora, Fauna and Beachscape Work Group has been focussing on the opportunity to secure funding for weed control in the fire affected areas of Wye River and Separation Creek. In the New Year this Work Group will be conducting community activities to increase knowledge of the management and protection of our flora and fauna.

VicRoads update

Great Ocean Road status

The Great Ocean Road is OPEN to all traffic. Two lanes are available along most of the tourist road from Torquay to Allansford. Temporary traffic management is in place at works areas in some locations.

The Great Ocean Road is reduced to one lane at only three locations in this area - at Separation Creek, Monash Gully just west of Wye River and at Grey River where we are constructing a new bridge.



Landslides



VicRoads alliance partner Fulton Hogan has completed work on two landslides on the ocean side of the Great Ocean Road at Wye River.

Construction crews built the two 3.5m tall concrete retaining walls along a 60m section of the Great Ocean Road, which will make the road safer, stable and sustainable well into the future.

Work is progressing to schedule on a third ocean-side retaining wall east of Separation Creek on the Great Ocean Road. This 12.5m long wall will be completed mid December. And, a fourth 45m-long retaining wall, between Wye River and Kennett River, at Monash Gully is due to be completed mid December.

Boom gates



VicRoads has introduced portable boom gates at road maintenance sites along the Great Ocean Road. The gates help traffic management teams regulate the flow of traffic through a number of project sites along the tourism route.

Paddy's Path

VicRoads and the Department of the Environment, Land, Water and Planning are progressing with works on Paddy's Path at Wye River to ensure it is open for the Christmas/summer holiday period.

In coming days, VicRoads will install a balustrade along the ocean side of the path, either side of the new bridge across the landslide zone, for about 50m and install another safety fence along the upper retaining wall on the hill.

The path, which links the Wye River and Separation Creek communities, is scheduled to reopen the week before Christmas through to Sunday, February 4, 2018. Geotechnical works will then resume and VicRoads will aim to reopen the path at weekends, from Friday afternoons to Monday mornings.

Safety

For the safety of all, it is imperative the public remains off Paddy's Path while works are in progress and construction teams and their equipment are working on the pedestrian link. VicRoads staff and contractors will minimise road works in the Wye River area between December 22 and February 4, during the peak summer holiday season to aid holiday traffic.

Preparation work on another 300m-long soil nailing zone along the Great Ocean Road between the stone-faced retaining wall and Stanway Drive will begin in early December with the removal of vegetation. Soil nailing the zone will commence in February 2018.

Erosion control

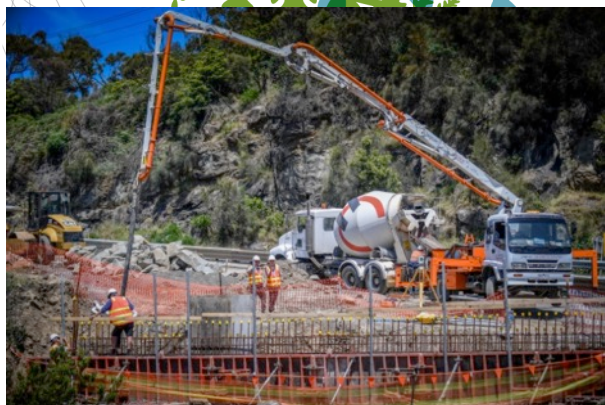
Work to stabilise up to 50 landslide sites between Jamieson River and Kennett River is nearing completion. The sites have been soil nailed, hydroseeded, covered in erosion control mat and overlaid with steel mesh.

Work was completed late last week draping and pinning rock fall netting on six cliff faces in the Kennett River area to prevent dislodged rocks falling onto the road. At Big Hill, just east of Lorne, work to install rock-fall netting on 360m of cliff face has been completed.

Eye in the sky

VicRoads has conducted aerial inspections of the Great Ocean Road at Anglesea, Lorne, Wye River and Kennett River. VicRoads is using drones to check for any deterioration in the geotechnical landscape and to identify the impact of natural drainage flows and ground movement. Laserscan data and aerial photographs will now be analysed to map landslide features and plot erosion control measures.

Grey River



VicRoads contractor Ace Constructions has completed setting bridge piles into both banks of the Grey River, east of Apollo Bay. Concrete abutments have been poured to support six single-span beams for the new bridge. The 25m-long beams will be transported to the site overnight on December 6 and 7 and lifted into place. One lane of the Great Ocean Road is temporarily closed on both approaches to the construction site. Traffic management is in place.

Apollo Bay



Road construction and asphalt works are almost complete on the Great Ocean Road in Apollo Bay, between the golf course at Nelson Street to the Barham River bridge.

Kerb, channel and footpaths are complete and the last section of asphalt will be laid the first week of December. Line marking is scheduled for the same week. Traffic management is in place.

At Princetown, 7km of road reconstruction work is progressing on three sites on the Great Ocean Road, 15km east of Port Campbell. The first section has been sealed. All work is due for completion mid March.

Great Ocean Road guardrail

Work is progressing on repairing sections of existing guardrail and installing lengths of new rail over various distances, totalling about one kilometre, between Kennett River and Jamieson River. There will be minor interruptions to traffic at these work sites. Work is scheduled for completion before Christmas.

Childers Cove

Work is progressing on the rehabilitation of the Great Ocean Road east of the Childers Cove intersection at Nirranda, 36km east of Warrnambool. These works are part of the \$3.6 million upgrade project to address a history of run-off-road, rear-end and other crashes at the intersection of the Great Ocean Road, Childers Cove Road and Mathiesons Road, between Peterborough and Allansford.

About 1600 vehicles travel on this section of the Great Ocean Road each day. The project involves upgrading the intersection and resealing the road surface. A T-intersection will replace the current two Y-intersections. Traffic management will be in place for the duration of the project.

Colac-Lavers Hill Road



A new 50m retaining wall (above) on the Colac-Lavers Hill Road, about 5km from Gellibrand, has been partially constructed after a landslip in mid November. One traffic lane has been closed with temporary traffic lights installed to ensure the safety of all road users.

Once the new retaining wall is in place, we will repair and resurface the damaged section of road and restore the speed limit to 100kmh. Construction should be completed by the end of this year.



To improve safety on the Great Ocean Road between Forest Road and Coalmine Road, we have installed a wide centre-line rumble strip treatment and roadside edge in both directions. The works along 800m of the Great Ocean Road, in partnership with the Transport Accident Commission, were completed last week.

The new linemarking treatment provides additional separation to traffic travelling in the opposite direction on this winding section of the tourist road. Cars are not permitted to cross the centre double lines.

Great Ocean Road

VicRoads has begun preliminary survey work on Anglesea Road and the Great Ocean Road as part of a road safety project funded by the TAC's Toward Zero program. The survey involves road pavement investigations, survey data collection and a cultural heritage assessment, which are imperative in helping to determine design and safety improvements. The survey work, running until December 22, will require speed reductions and some lane closures for short periods, between 9am and 5.30pm weekdays.

Anglesea pedestrian refuge

VicRoads has installed a pedestrian refuge on the Great Ocean Road outside the Anglesea Surf Life Saving Club to create safer pedestrian access for beachgoers. The footpath to nearby Harvey Road has also been realigned. Works are due to be completed mid-December.

Traffic alerts

There are no traffic alerts in place.