

# 9. NELSON ST. INTERSECTION



## Overview

Previous studies have identified that the traffic function at the Nelson Street / Great Ocean Road intersection needs to be improved. This is intended to improve the safety of vehicles and pedestrians in this area, and also facilitate the routing of buses along Pascoe Street (refer Pascoe Street).

Key considerations include:

- The war memorial located at the intersection of Nelson Street has cultural and heritage significance and a symbolic connection to the Great Ocean Road in its current location and alignment. Space for gathering or viewing is limited around the memorial.
- Within the foreshore reserve, is a amphitheatre space (grass mounds).



Historic photo of the Nelson Street / Collingwood Street intersection, with the memorial in its current alignment.

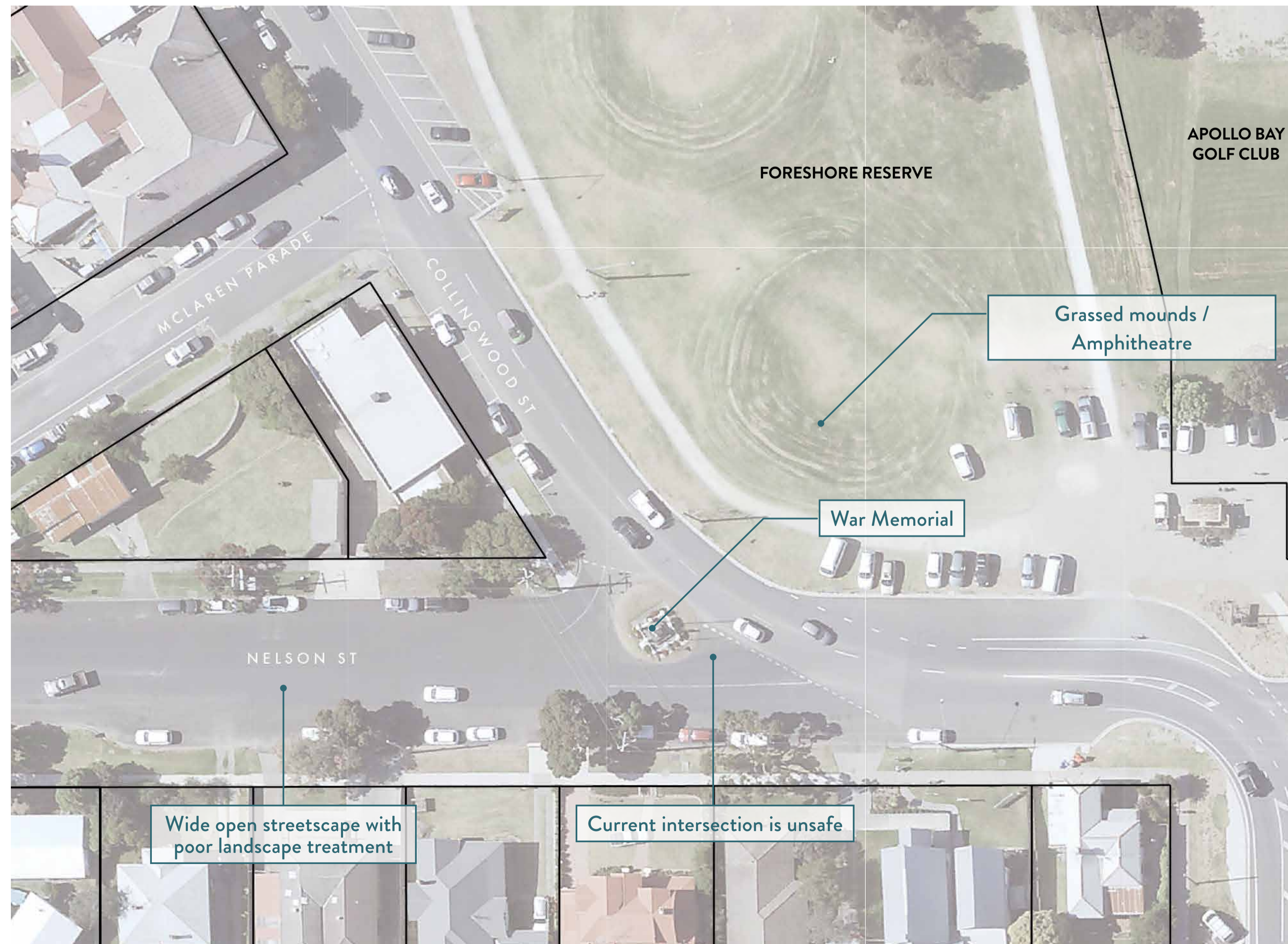
## Regional Roads Victoria Proposal

Regional Roads Victoria (RRV) have identified the potential to install a roundabout at the intersection of the Great Ocean Road and Nelson Street, Apollo Bay.

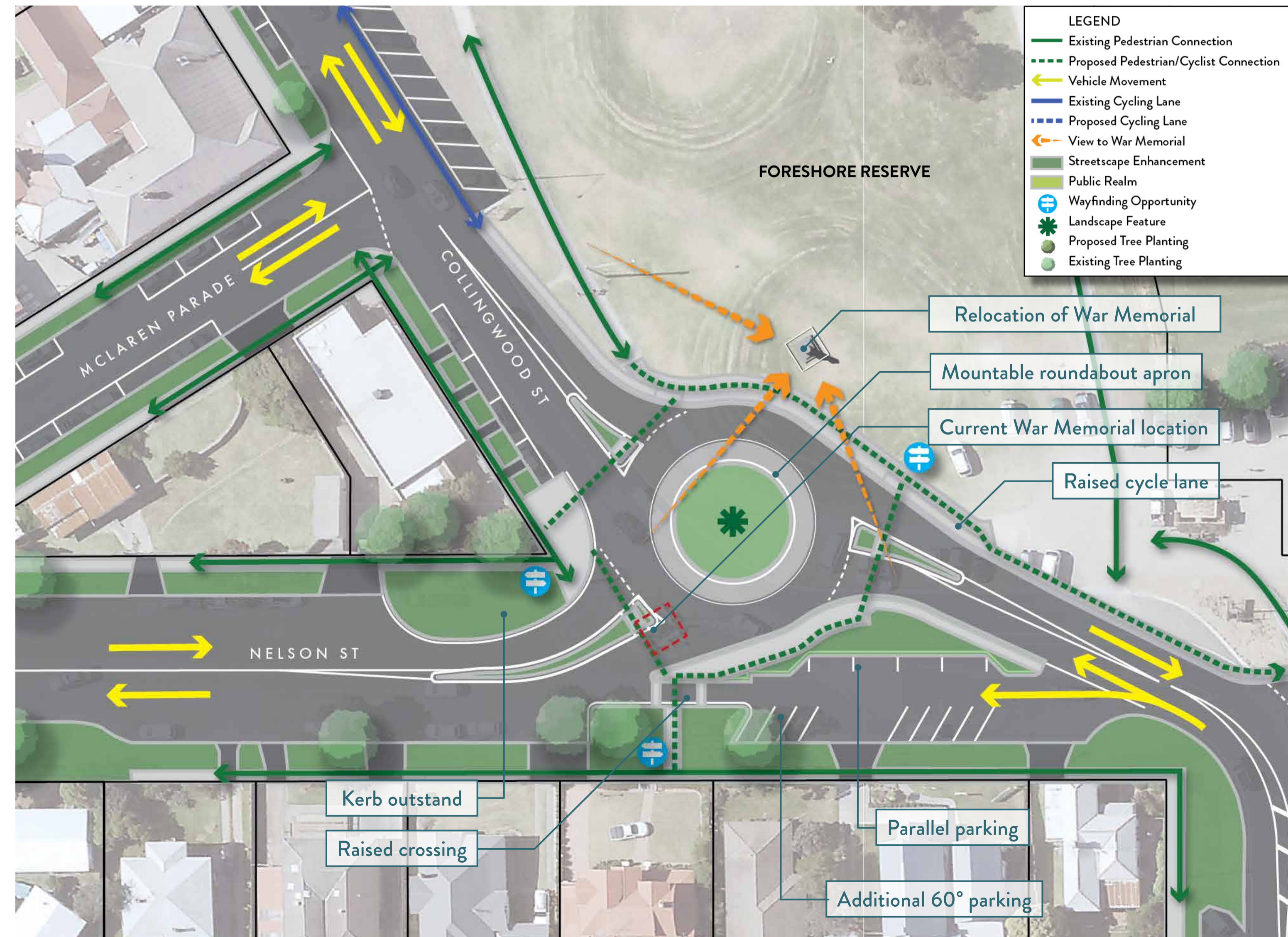
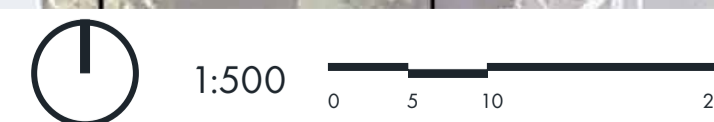
RRV have advised that a roundabout is its preferred option as this was considered to provide a range of benefits including:

- Relocation of the war memorial into the foreshore reserve;
- Increased parking adjacent to Moontide and the church;
- Allowing buses to turn around on the Great Ocean Road;
- Improving safety issues such as confusion at the intersection and pedestrian safety.

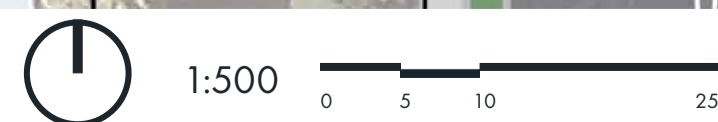
Feedback from Stage 1 consultation indicated that there were concerns with regards to relocating the memorial in this proposal. It was noted that the design of a new intersection treatment should consider potential impacts on the amphitheatre spaces (grass mounds) and the location of the war memorial.



Nelson Street / GOR Intersection - Existing Conditions

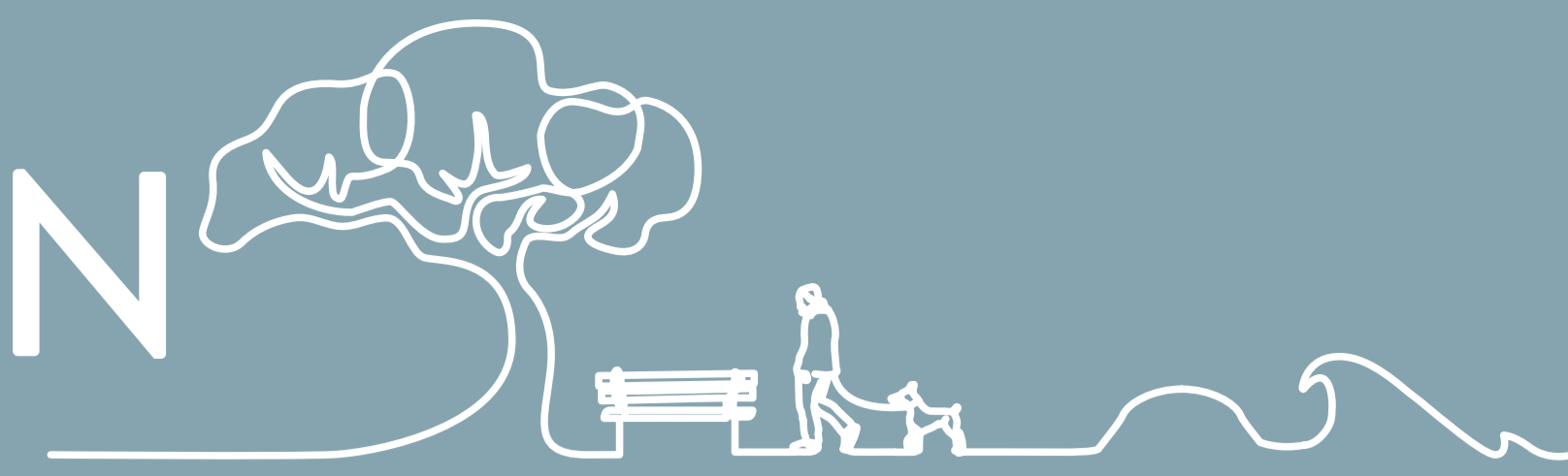


Nelson Street / GOR Intersection - RRV Proposal





# 9. NELSON ST. INTERSECTION

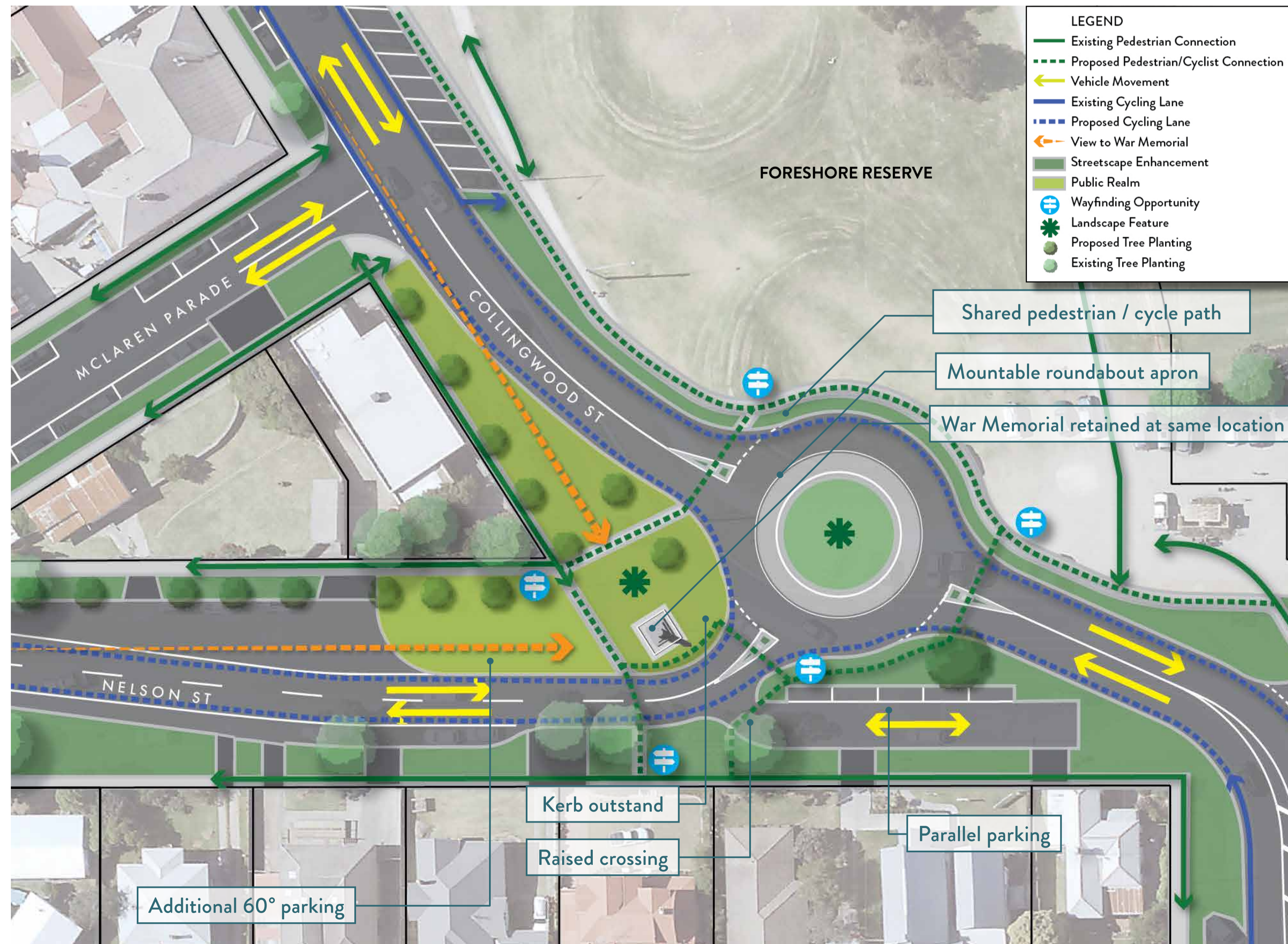


## Two Way Option KEY ELEMENTS

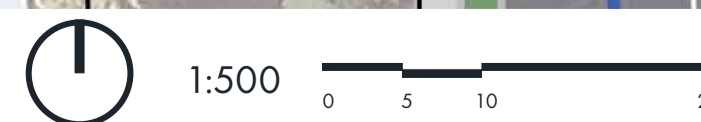
The design specifically:

- Provides a roundabout (in line with RRV's preferences) to address safety issues such as confusion at the intersection, pedestrian safety and to allow for coaches to turn around.
- Retains the war memorial in its current location within an expanded and enhanced public space. This will allow for improved access and gathering adjacent.
- Increases parking adjacent to Moontide and the church.
- Provides connected pedestrian footpaths along both sides of the street.
- Provides pedestrian refuges and/or kerb outstands (new or modified), to narrow the crossing distance of GOR and Nelson Street.

- Allows for wayfinding signage to help people navigate through the town and to key destinations.
- Reinforces GOR as a key street and a key pedestrian and vehicular route within Apollo Bay through enhanced street tree planting and landscape treatments.
- Impacts on the grass mound within the foreshore reserve.
- Rationalises access to Golf Course car park to single point off Nelson Street minimising direct entry onto the GOR and improving vehicular and pedestrian safety.



Nelson Street / GOR Intersection - Two Way Option

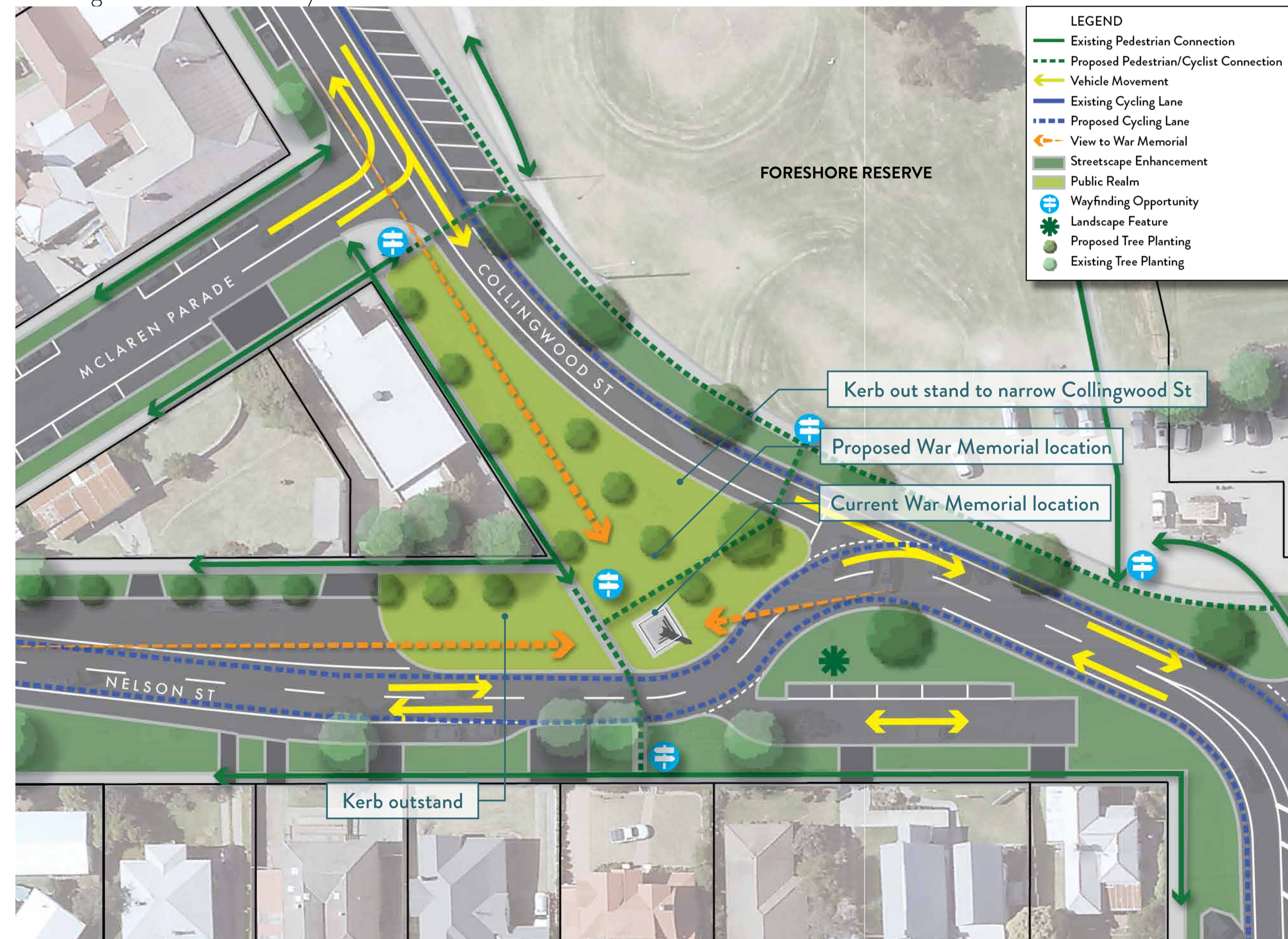


## One Way Option KEY ELEMENTS

The design specifically:

- Facilitates permanent one way access provided along Collingwood Street. This will require realignment of kerbs, particularly along shop fronts and will allow for vehicle and bus access focused along Pascoe Street.
- Retains the war memorial in its current location within a significantly expanded and enhanced public space. This will allow for improved access and gathering adjacent.
- Increases parking adjacent to Moontide and the church.
- Provides connected pedestrian footpaths along both sides of the street.
- Allows for wayfinding signage to help people navigate through the town and to key destinations.

- Reinforces GOR as a key street and a key pedestrian and vehicular route within Apollo Bay through enhanced street tree planting and landscape treatments.
- Minimises impacts to modified grass mound within the foreshore reserve.
- Rationalises access to Golf Course car park to single point off Nelson Street minimising direct entry onto the GOR and improving vehicular and pedestrian safety.



Nelson Street / GOR Intersection - One Way option

