

8. PASCOE STREET



Overview

Pascoe Street provides a secondary north-south route through the town centre. A wide street, it is currently dominated by vehicle lanes and car parking. The opportunity to re-route traffic along Pascoe Street has previously been flagged to reduce traffic on Collingwood Street at key times of the year, to provide additional bus parking and improve the utilisation of off street parking, as well as improve pedestrian access.

Key considerations include:

- Provision of a temporary public toilets is planned within an off street car park along Pascoe Street. This is intended to service bus drivers and visitors and reduce demand on foreshore infrastructure. The toilet will be made permanent if funding becomes available.
- Street tree planting in Pascoe Street is limited and does not match the grand scale of the streetscape.
- Opportunity to improve pedestrian and cycle access, including access to key destinations and community facilities.

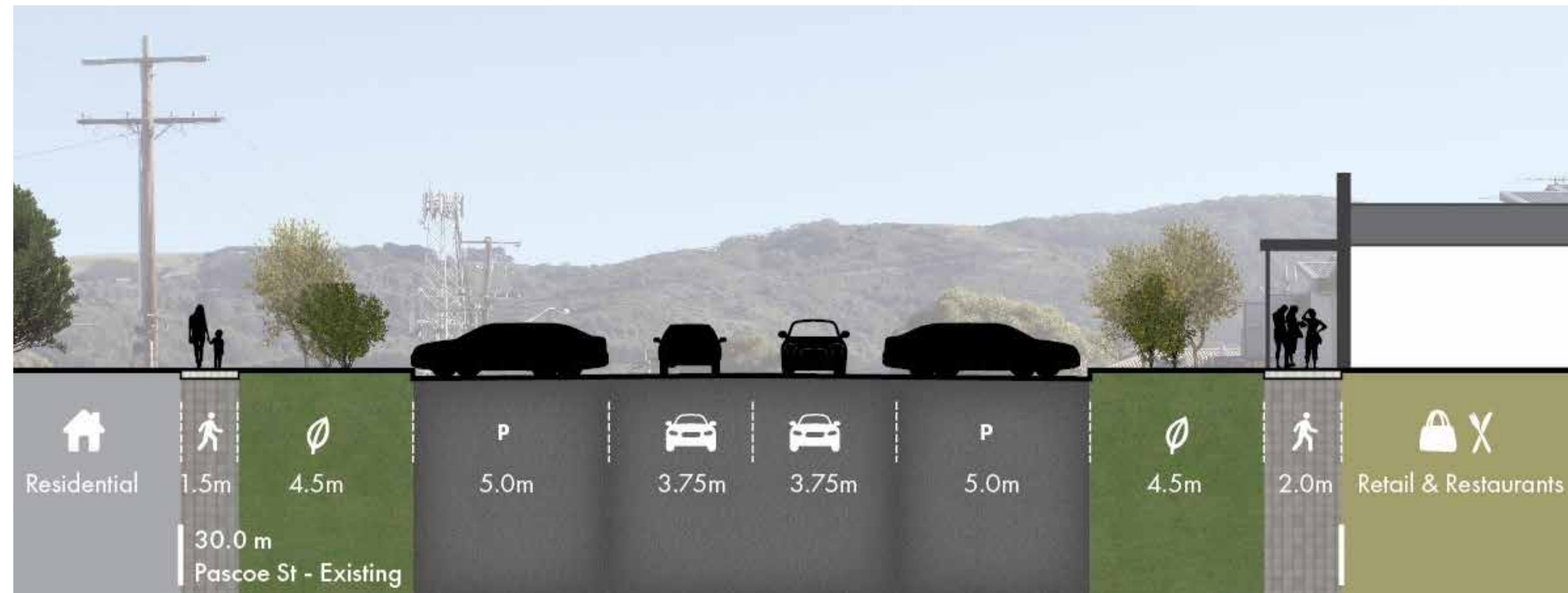
Colac Otway Tourism Parking and Traffic Strategy Proposal

The Colac Otway Shire Tourism Parking and Traffic Strategy identified a proposal for improvements to Pascoe Street.

Key elements of this proposal include:

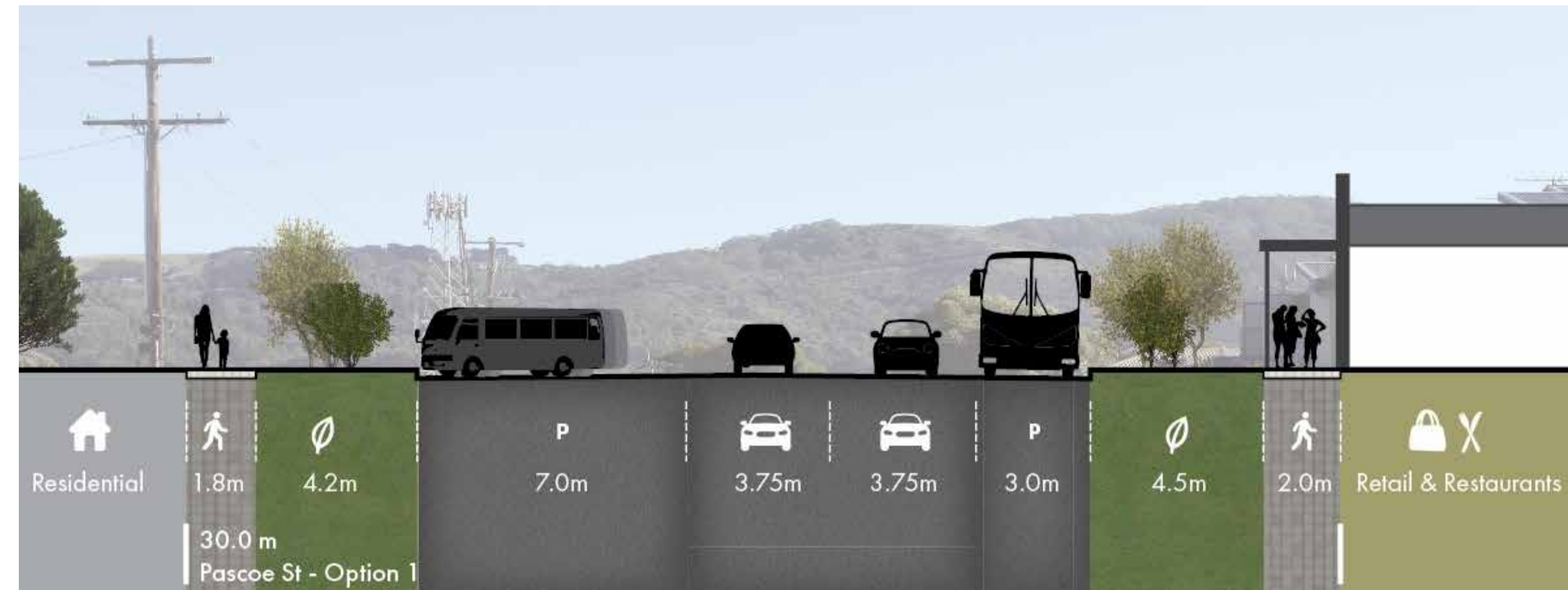
- Pedestrian footpaths provided along both sides of the street.
- Long vehicle parking allowed for by increasing angled parking bays adjacent to the residential uses along Pascoe Street.
- Parallel coach and parking provided along one side of the road, adjacent to retail uses. Opportunities for bus parking is however limited by existing driveways.

- Reduction of car parking spaces to allow for coach and long vehicle parking.
- A roundabout to manage four way intersections and allow for coaches to turn around.
- Provision of a combination of pedestrian refuges and/or kerb outstands (new or modified), to narrow the crossing distance of Pascoe Street. NB: Fisk Street pedestrian refuge.
- Provision of a public toilet within Pascoe Street (planned).



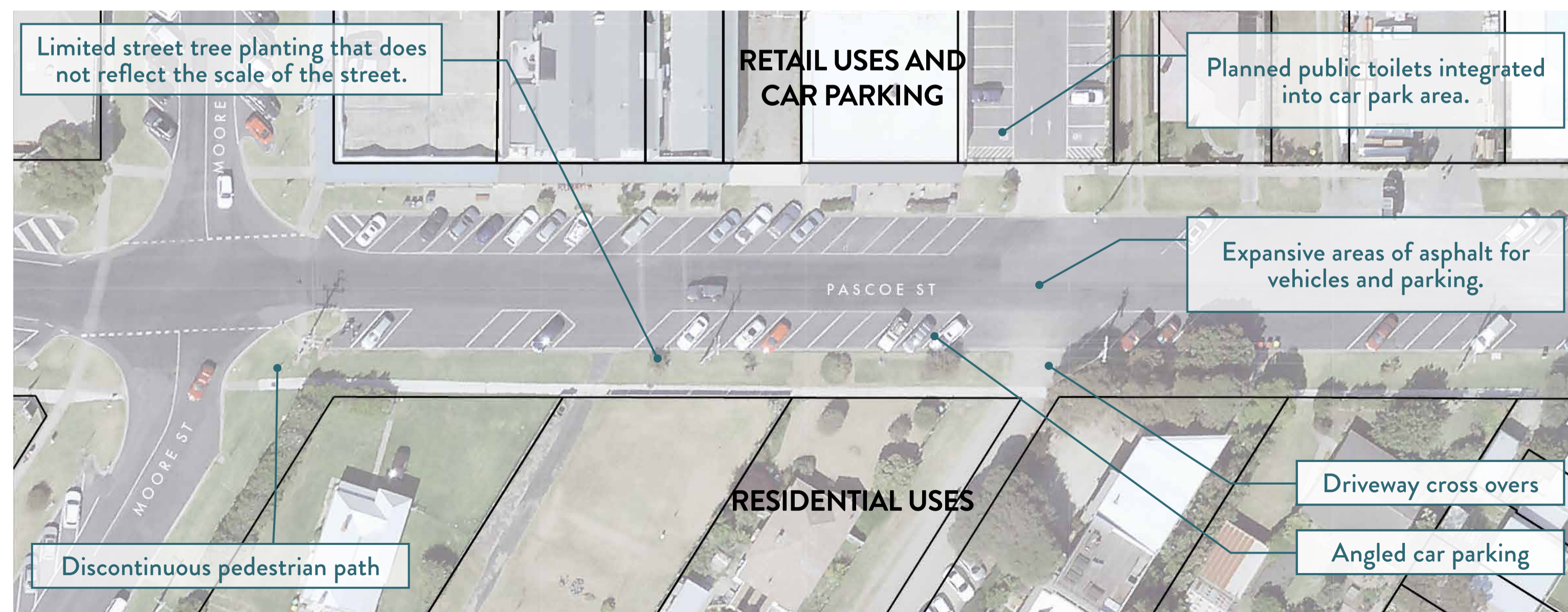
Cross Section - Existing

1:100



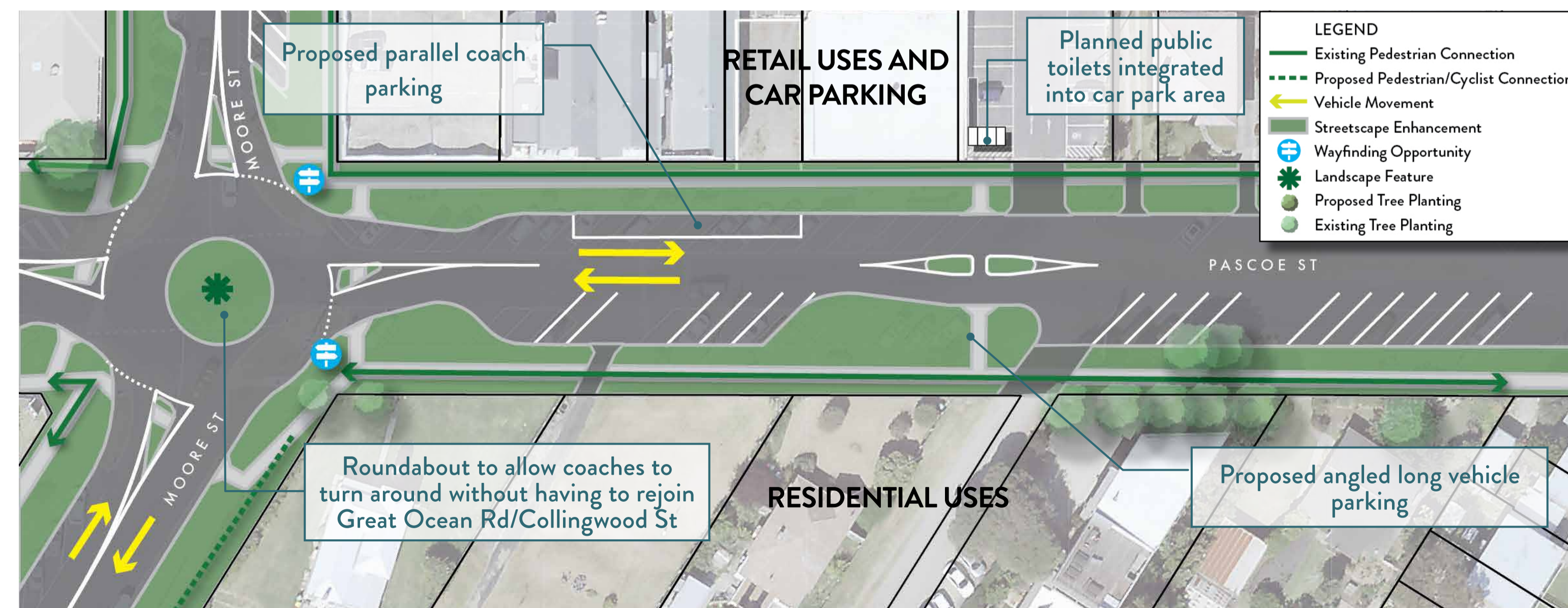
Cross Section - CO Tourism Parking and Traffic Strategy

1:100



Pascoe Street - Existing Conditions

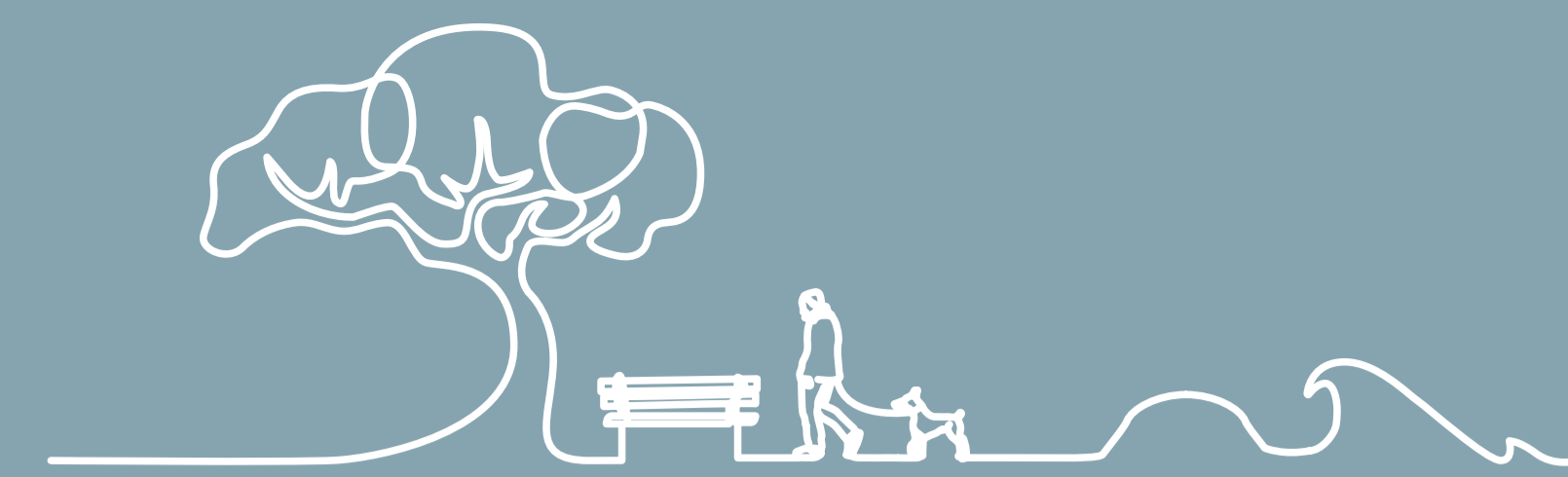
1:500



Pascoe Street - CO Tourism Parking and Traffic Strategy

1:500

8. PASCOE STREET



Improvement Opportunity - On Street Bus Parking

KEY ELEMENTS

The design specifically:

- Pedestrian footpaths provided along both sides of the street.
- Mini bus parking allowed for by increasing angled parking bays adjacent to the retail uses along Pascoe Street.
- Parallel coach and parking provided along one side of the road, adjacent to residential uses. Opportunities for bus parking is however limited by existing driveways.

- Reduction of car parking spaces to allow for coach and long vehicle parking.
- A roundabout to manage four way intersections and allow for coaches to turn around.
- Provision of a combination of pedestrian refuges and/or kerb outstands (new or modified), to narrow the crossing distance of Pascoe Street.
- Provision of a public toilet within Pascoe Street (planned).



Cross Section - On Street Bus Parking

1:100

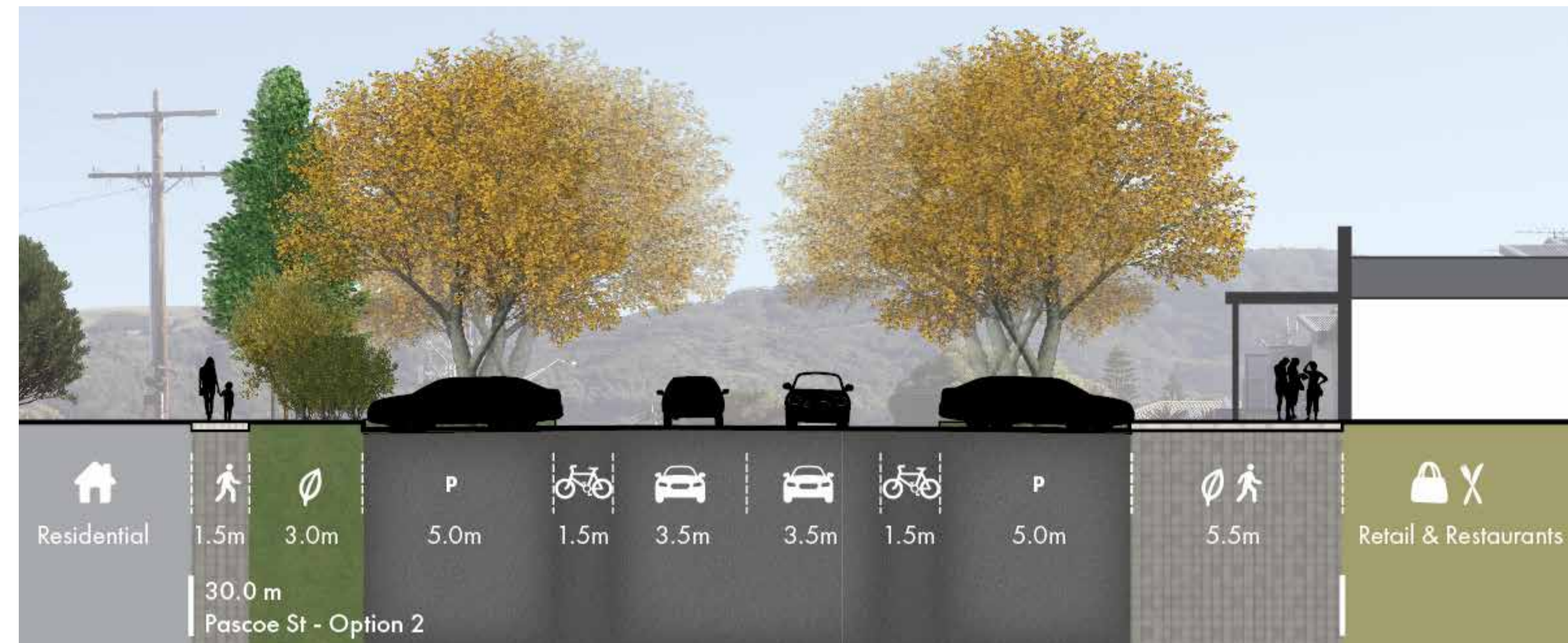
Improvement Opportunity - Off Street Bus Parking

KEY ELEMENTS

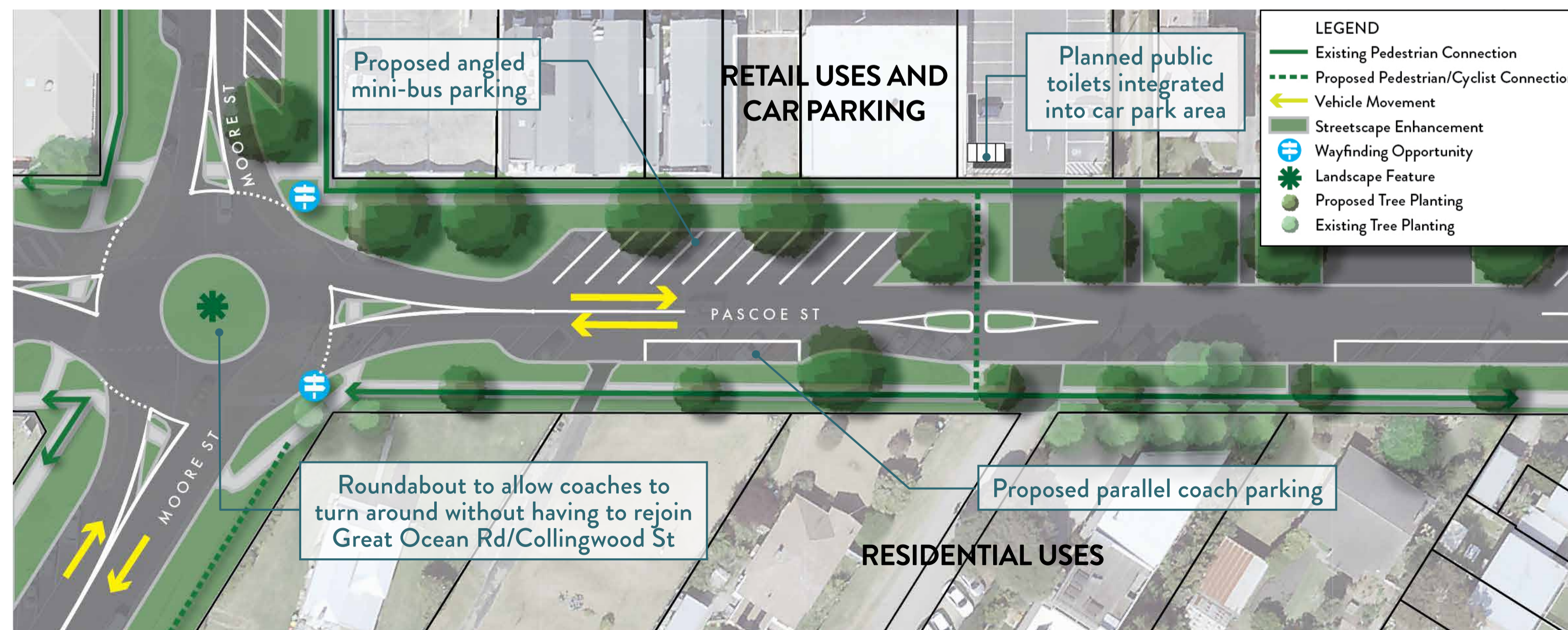
The design specifically:

- Locates long vehicle and bus parking in an off-site location (to be determined) to minimise the impact to on street parking. This will require land acquisition.
- Provides footpaths along both sides of the street, including a wider path along the retail side of the street.
- Provides pedestrian refuges and/or kerb outstands (new or modified), to narrow the crossing distance of Pascoe Street.

- Increases streetscape amenity through a combination of widened kerb outstands and street tree planting.
- Provides angle parking along both sides of the street. Space within the road has been allowed for reversing in line with best practice standards.
- Provides wayfinding signage to improve the utilisation of car parks along Pascoe Street (on and off street) and to direct people to key destinations, including the bus parking area.

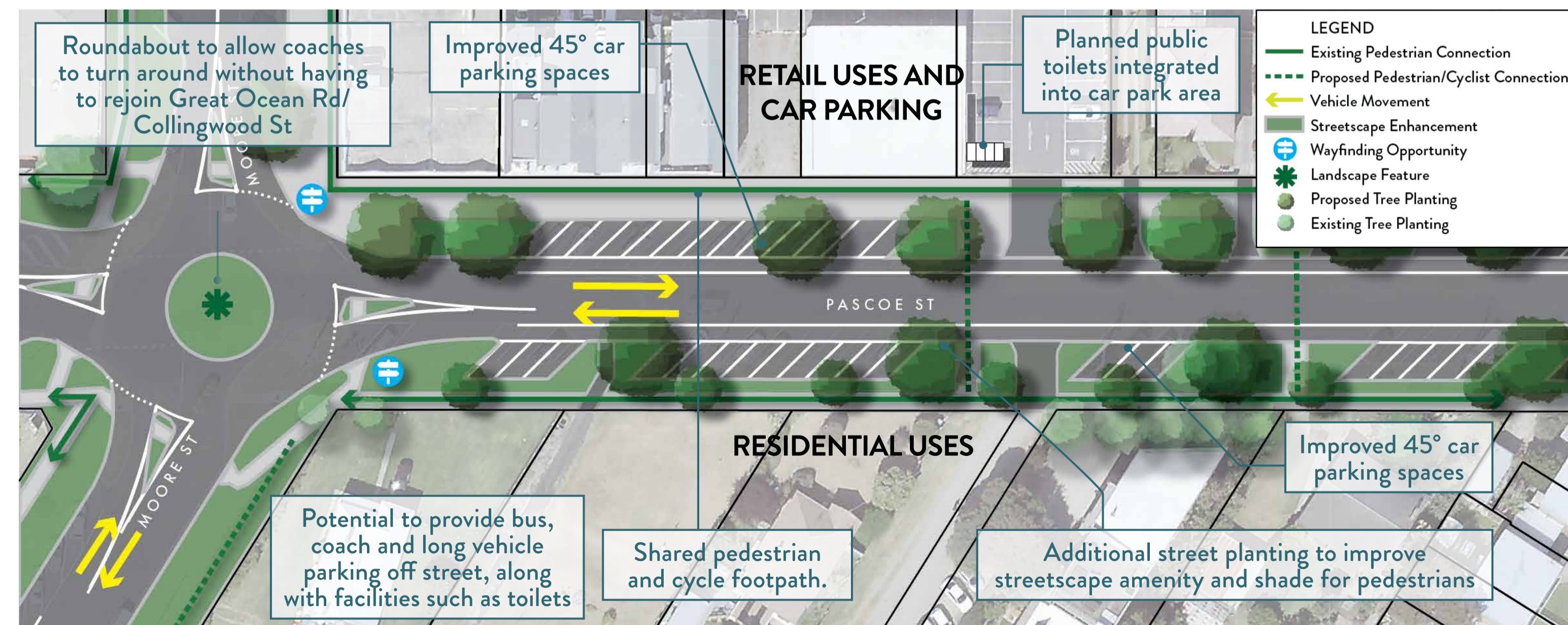


Cross Section - Off Street Bus Parking



Pascoe Street - On Street Bus Parking

1:500



Pascoe Street - Off Street Bus Parking

1:500