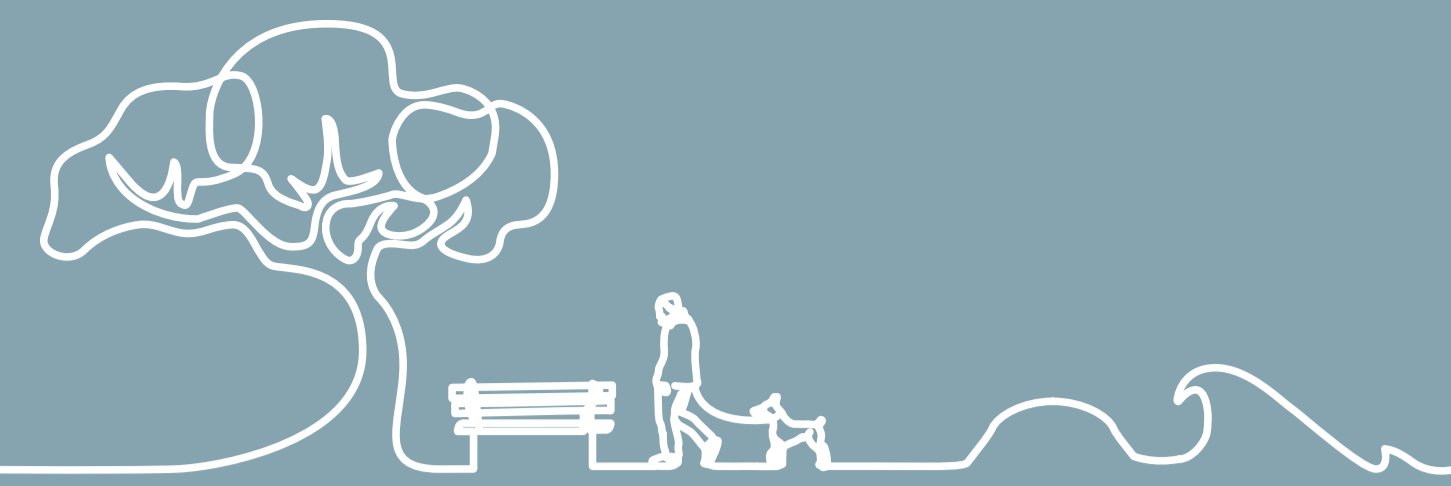


5. APOLLO BAY FORESHORE

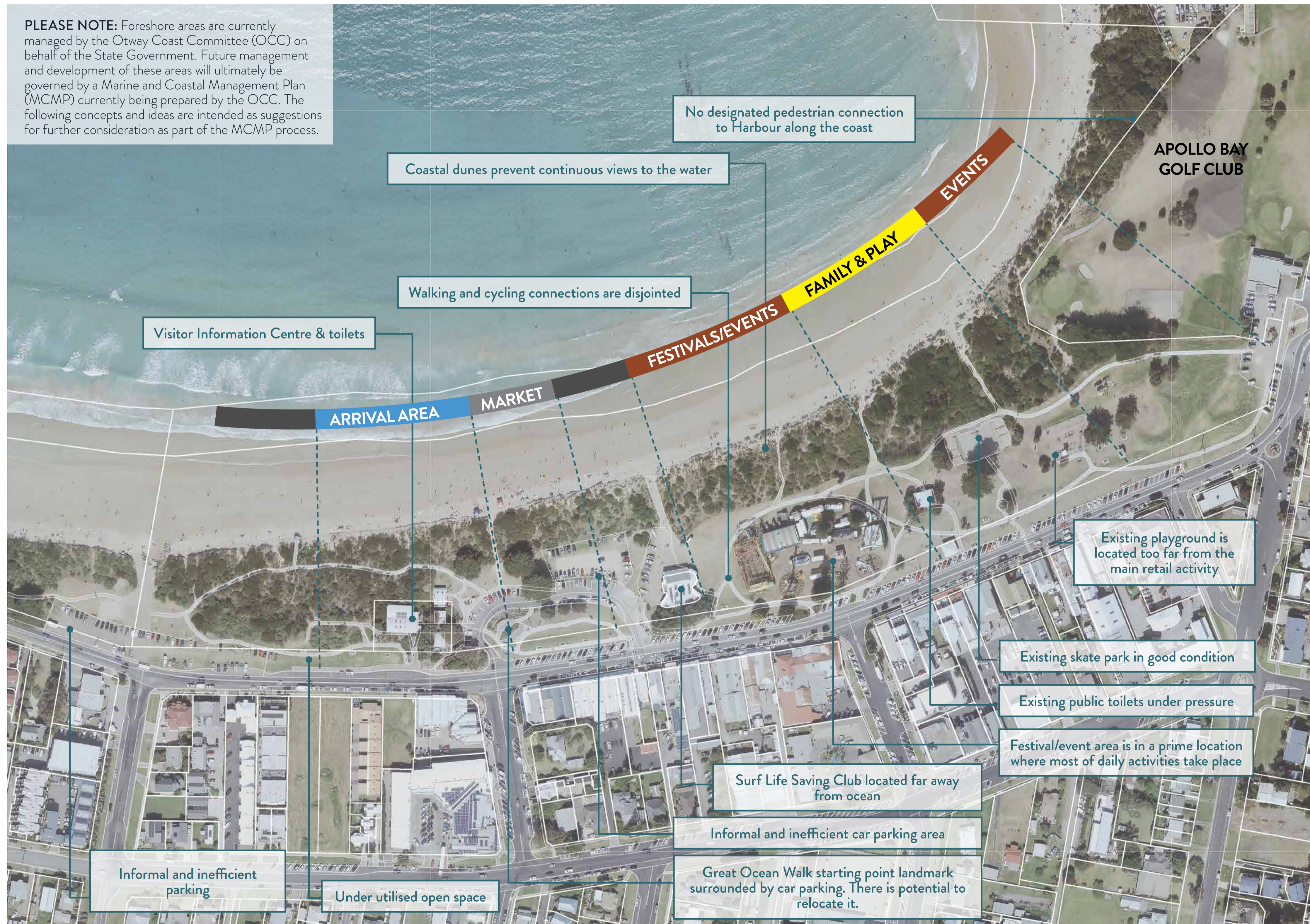


Overview

Apollo Bay Foreshore Reserve is a key destination in Apollo Bay and the Shipwreck Coast. The foreshore has unfortunately been planned in an ad-hoc way and this has resulted in discontinuous paths, scattered uses and an eclectic mix of landscaping and furniture. There is a need to provide a clear framework for future development and the siting and design of facilities and infrastructure.

Key considerations include:

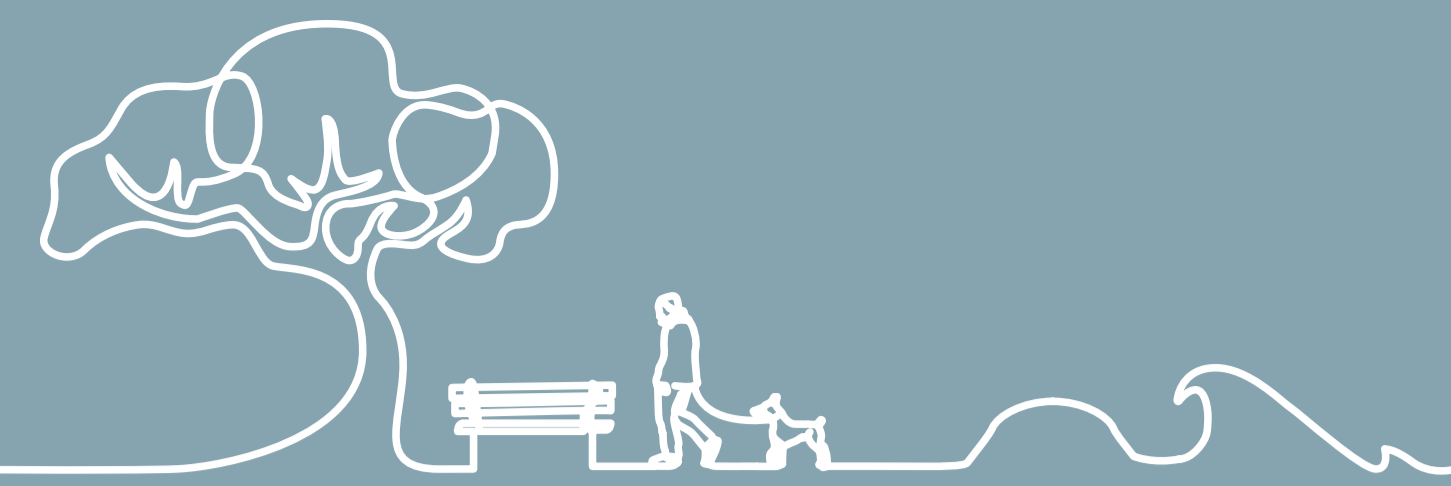
- There is a shift to international and day visitations that is placing stress on existing infrastructure such as the foreshore reserve. Spaces need to be adaptable to low use and high use modes.
- Walking and cycling connections along the foreshore are disjointed and could be improved. In particular the Great Ocean Walk is not continuous.
- The playground is a well-used by both residents and visitors. There is the potential to provide a more substantial facility that reflects the regional significance of this space for a variety of people.
- The Surf Life Saving Club has proposed a concept plan for providing new and improved facilities in their current location. This includes a new building in a similar location with an integrated public toilet, and improvements to beach access and car parking.
- Coastal dunes prevent continuous views to the water.
- The nature and role of visitor services are changing to suit visitor needs and technological advancements. This will need to be considered in the planning of buildings and infrastructure within the foreshore.



Apollo Bay Foreshore - Existing Conditions



5. APOLLO BAY FORESHORE



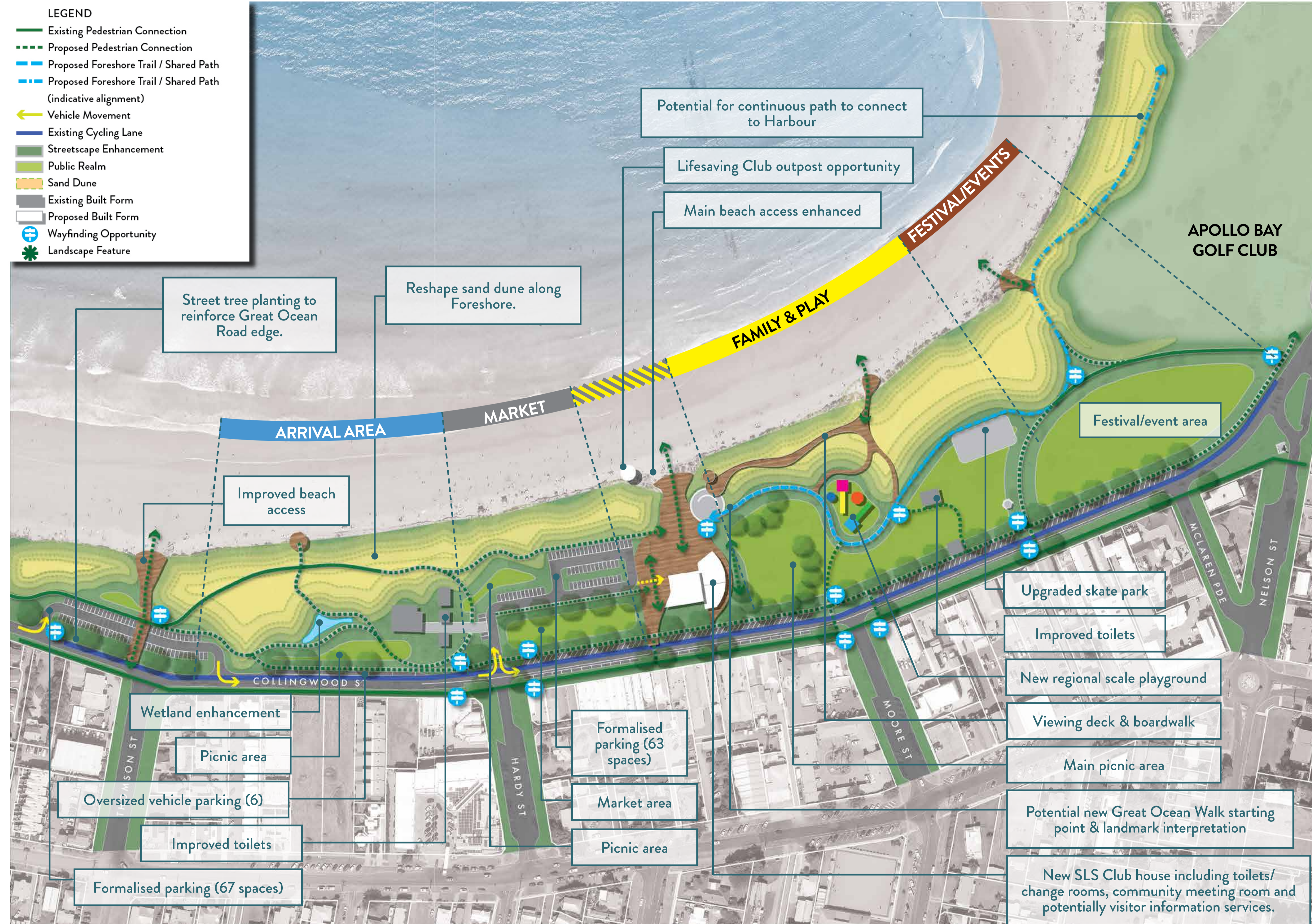
Improvement Opportunities

The site planning option aims to look past the legacy of past design treatments and residual infrastructure in order to create a more deliberate design and land use arrangement that meets the needs of current users. The proposal will enable the foreshore to reach its potential as the major destination in Apollo Bay.

KEY ELEMENTS

The design specifically:

- Creates a central picnic and play area that acts as an activity focus within the foreshore reserve for both visitors and locals.
- Creates a more efficient market space and parking area.
- Creates a larger surf club operational area and beach monitoring facility.
- Create stronger connections between the foreshore and other key destinations, such as the Harbour, community facilities and shopping precinct.
- Creates a shared use community facility that provides a community meeting room, beach change and the potential for future visitor information services i.e kiosk, displays etc.
- Repositions the event area into a larger and more flexible space.
- Creates new beach connections and lookout points that will be attractive to locals and visitors and provide a stronger visual connection to the water.
- Creates a larger and more naturalistic dune system and a park environment which has a greater visual presence within the town centre.



Apollo Bay Foreshore Layout - Concept Plan

NTS

PLEASE NOTE: Any infrastructure suggested on or close to dunal areas will need further rigorous investigation by the relevant authorities, particularly with regard to potential erosion and dune stability.

5. APOLLO BAY FORESHORE

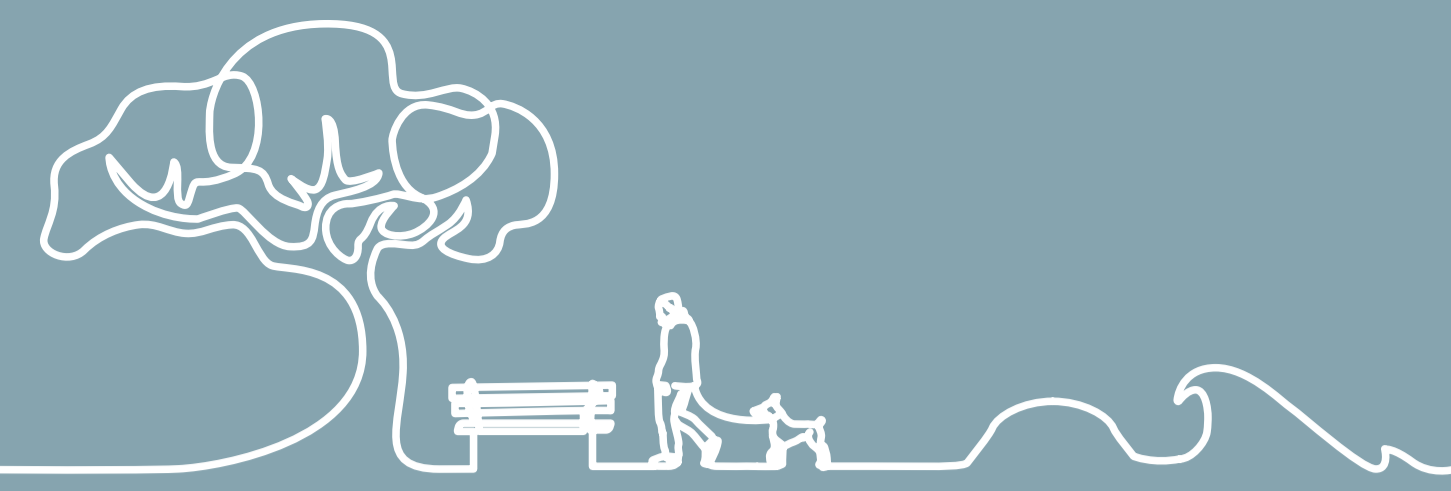


Image and Character Ideas

Image and Character Ideas are photo examples of other places provided to generate some thoughts and ideas on how the Apollo Bay Foreshore could look in the future. The photos present a range of design ideas for the area.

BUILT FORM



A.1 Contemporary built form utilizing natural materials.



A.2 Simple built form with a focus on glass and timber.



A.3 Life saving outpost.



A.4 Formal amphitheater / stage for large events.

PUBLIC ART



A.5 Public art to reflect local qualities of Apollo Bay and its context.

FITNESS / EXERCISE



A.6 Fitness and exercise equipment for all abilities.

PEDESTRIAN ACCESS



A.7 Shared paths allowing for pedestrian and cycle access within the foreshore.



A.8 Paths to provide access and delineate areas of the foreshore.

PLAY



A.9 Play opportunities for all ages include small kids and youth.



A.10 Enhanced adventure play space providing for visitors and locals.

SIGNAGE



A.11 Directional signage with time and distances.

PICNIC AREAS



A.12 Comfortable and well located spaces for people to sit and relax.

PUBLIC TOILETS



A.13 Well designed public toilets, reflecting the coastal character of the foreshore.

BEACH ACCESS



A.14 Improved and clearly defined access to the beach.

COASTAL DUNES



A.15 Boardwalks to provide sensitive access across and along coastal dunes.