

# 3. TOWNSHIP CONNECTIONS



## Overview

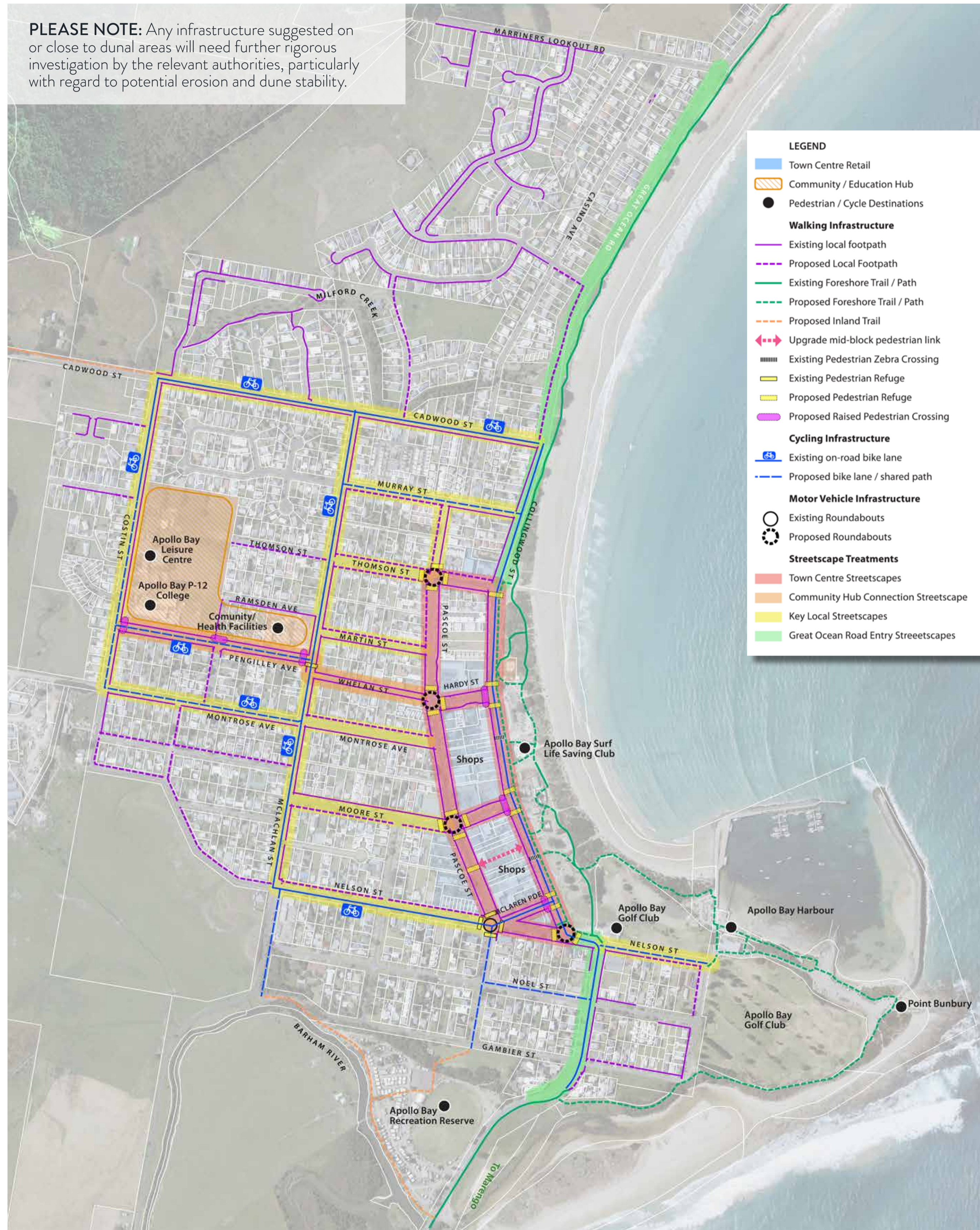
The township connections, shown opposite, integrate a range of ideas identified in previous studies and community and stakeholder input.

The proposed township connections will improve pedestrian and cycle access and safety across the three towns, and connect people to key destinations and facilities.

## Apollo Bay

### IMPROVEMENT IDEAS

- Improved pedestrian conditions along Collingwood Street to make it easier walk along the street and cross the road into the foreshore reserve
- Enhancements to Pascoe Street to improve cycling connections and make it easier for pedestrians to cross
- A clear pedestrian link up to the Community and Education Hub with pedestrian priority at intersections, canopy street tree planting and signage
- A range of new footpaths to enhance local connections
- Clear and continuous connections along the foreshore
- New roundabouts along Pascoe Street to support its role in providing additional bus parking
- A hierarchy of streetcapes with themed landscaping to enhance wayfinding across the Town Centre



Township Connections - Apollo Bay

## PRECEDENT IMAGES

The following images are examples of pedestrian crossing treatments.



Raised pedestrian crossing



Pedestrian refuge



Pedestrian refuge

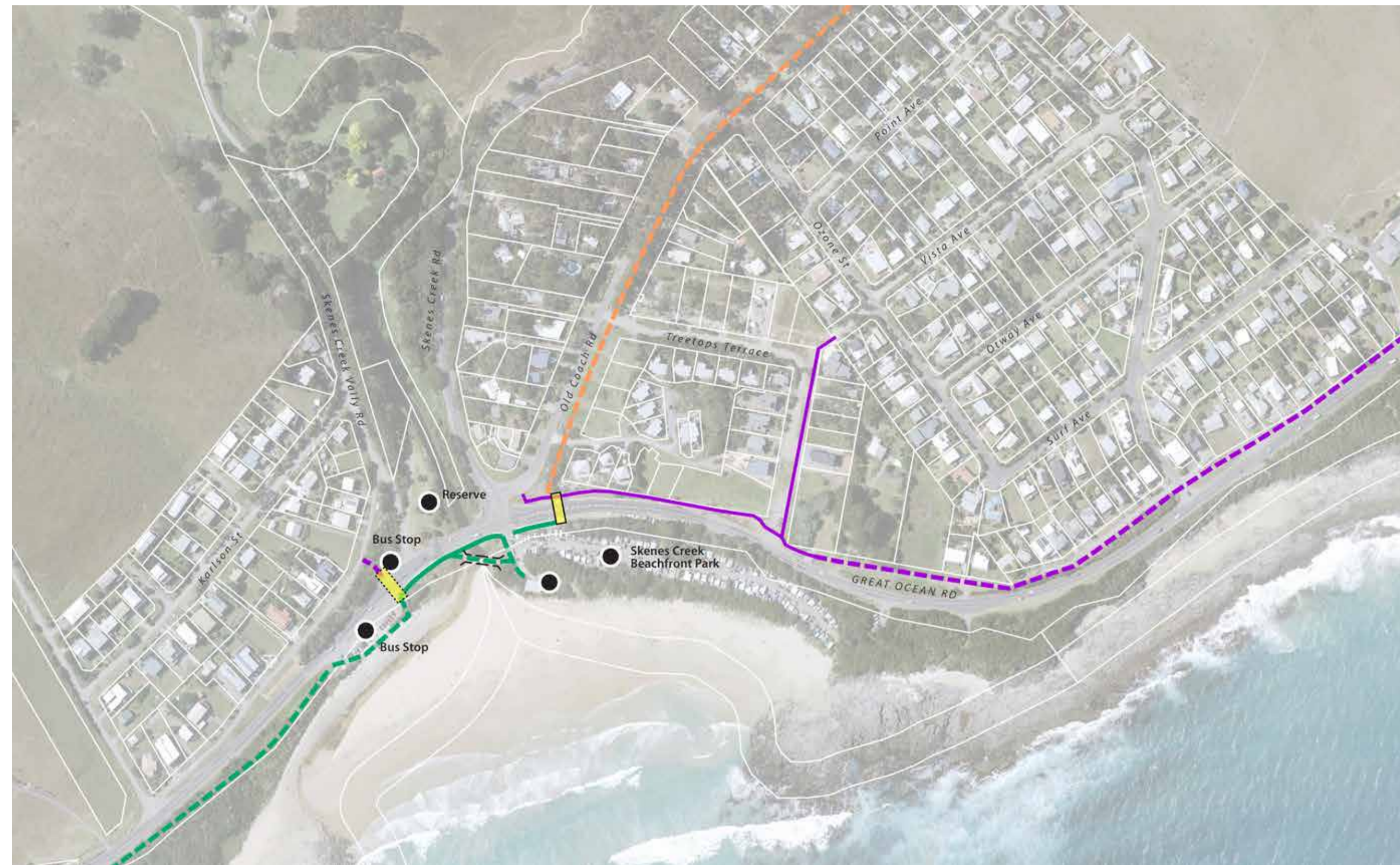
# 3. TOWNSHIP CONNECTIONS



## Skenes Creek

### IMPROVEMENT IDEAS

- An additional pedestrian refuge along the Great Ocean Road to make it easier to access the foreshore and bus stop.
- A potential pedestrian bridge providing a direct connection between the main car park / bus stops and the public toilets / foreshore access.
- A new footpath on the north side of Great Ocean Road providing a safe, local connection to residences.
- A continuous foreshore path proposed as part of the Skenes Creek to Wild Dog Creek Coast Discovery Trail which was developed by a community led steering Committee.
- A potential trail along Old Coach Road up to Hickeys Cutting.



Township Connections - Skenes Creek

## Marengo

### IMPROVEMENT IDEAS

- A continuous foreshore trail providing access along the Marengo Foreshore Reserve and extending around the headland to connect with the Great Ocean Walk.



Township Connections - Marengo

### PRECEDENT IMAGES

The following images are examples of pedestrian improvement ideas.



Pedestrian bridge



Timber boardwalk

#### LEGEND

- Pedestrian / Cycle Destinations
- Existing Local Footpath
- - - Proposed Local Footpath
- Existing Foreshore Trail / Path
- - - Proposed Foreshore Trail / Path
- - - Proposed Inland Trail
- ▭ Existing Pedestrian Refuge
- ▭ Proposed Pedestrian Refuge

**PLEASE NOTE:** Any infrastructure suggested on or close to dunal areas will need further rigorous investigation by the relevant authorities, particularly with regard to potential erosion and dune stability.