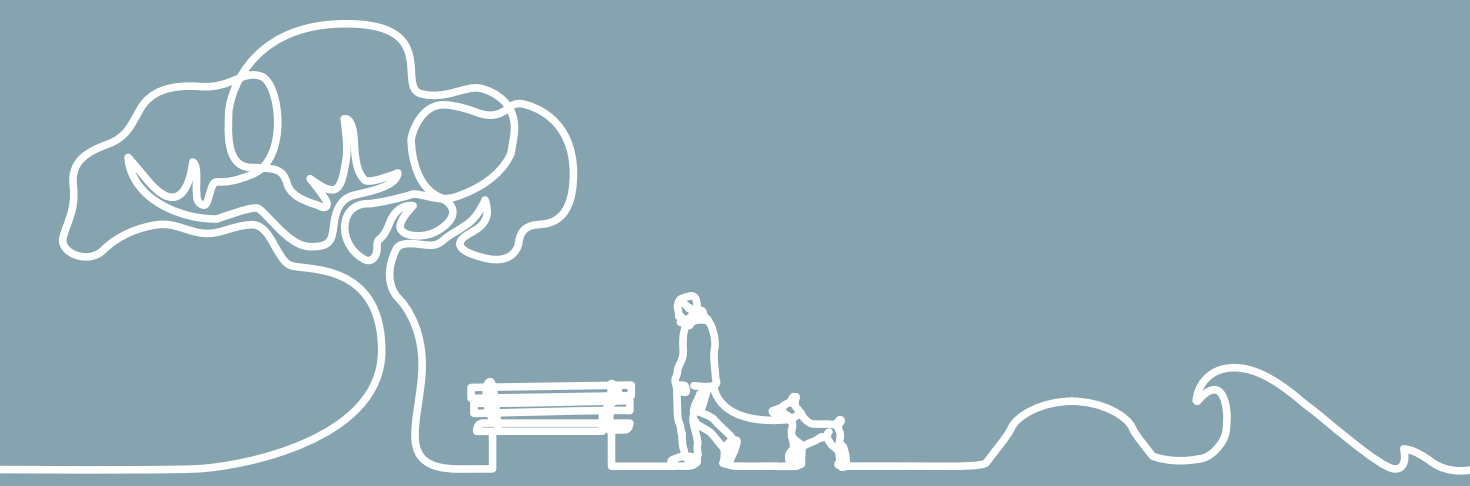


10. SKENES CK FORESHORE



Overview

The foreshore of Skenes Creek including the toilets area, car parking area, as well as Skenes Creek Reserve are key activity nodes. Previous studies and consultation feedback highlighted a desire to improve the appearance, functionality and amenity of these areas, while managing capacity constraints.

Key considerations include:

- Recent upgrades have been made to the pedestrian paths between Old Coach Road and the Caravan Park (across the Great Ocean Road).
- The foreshore and car park area is difficult to access due to vehicle speeds and sightlines.
- Informal car parking at the foreshore presents poorly, is limited and inefficient.
- Limited provision of amenities at the foreshore such as seating and shelter.

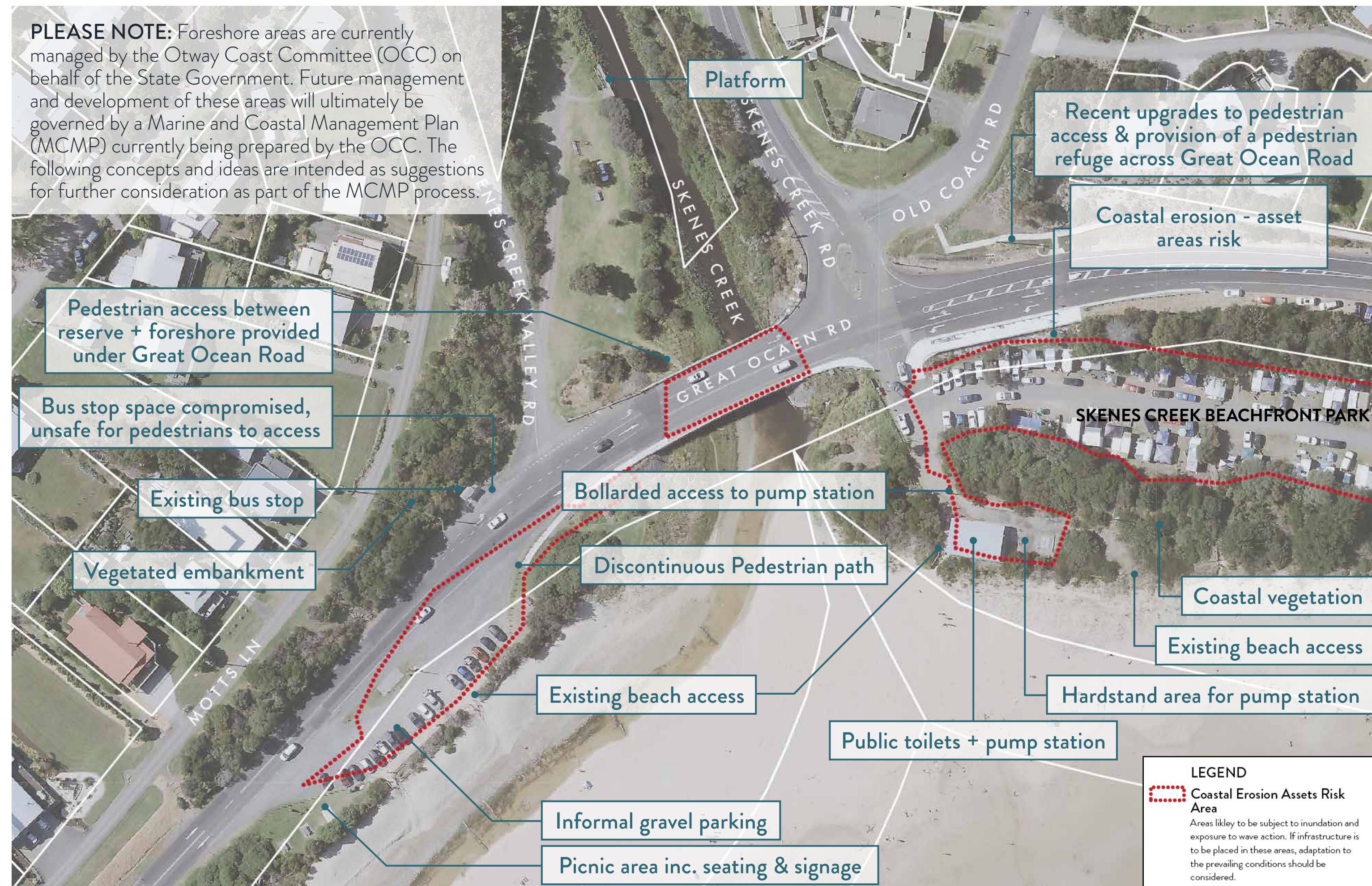
- Public toilets are disconnected from key picnic areas.
- The landscape setting of Skenes Creek, at the intersection of the foothills, the coastline, bushland and farmland is an important feature of Skenes Creek and the arrival experience.
- The Skenes Creek Beachfront Park occupies a premium location along the foreshore. Its entrance is shared with public access to the toilets.
- Walking and cycling connections between residential areas and the foreshore are disjointed and difficult to achieve due to the sloped terrain.
- The foreshore environment has been impacted significantly by erosion. New works provide the opportunity to rehabilitate the foreshore environment.
- Existing service infrastructure including pump station and hard stand located at the foreshore and would be difficult to relocate.

Improvement Opportunities

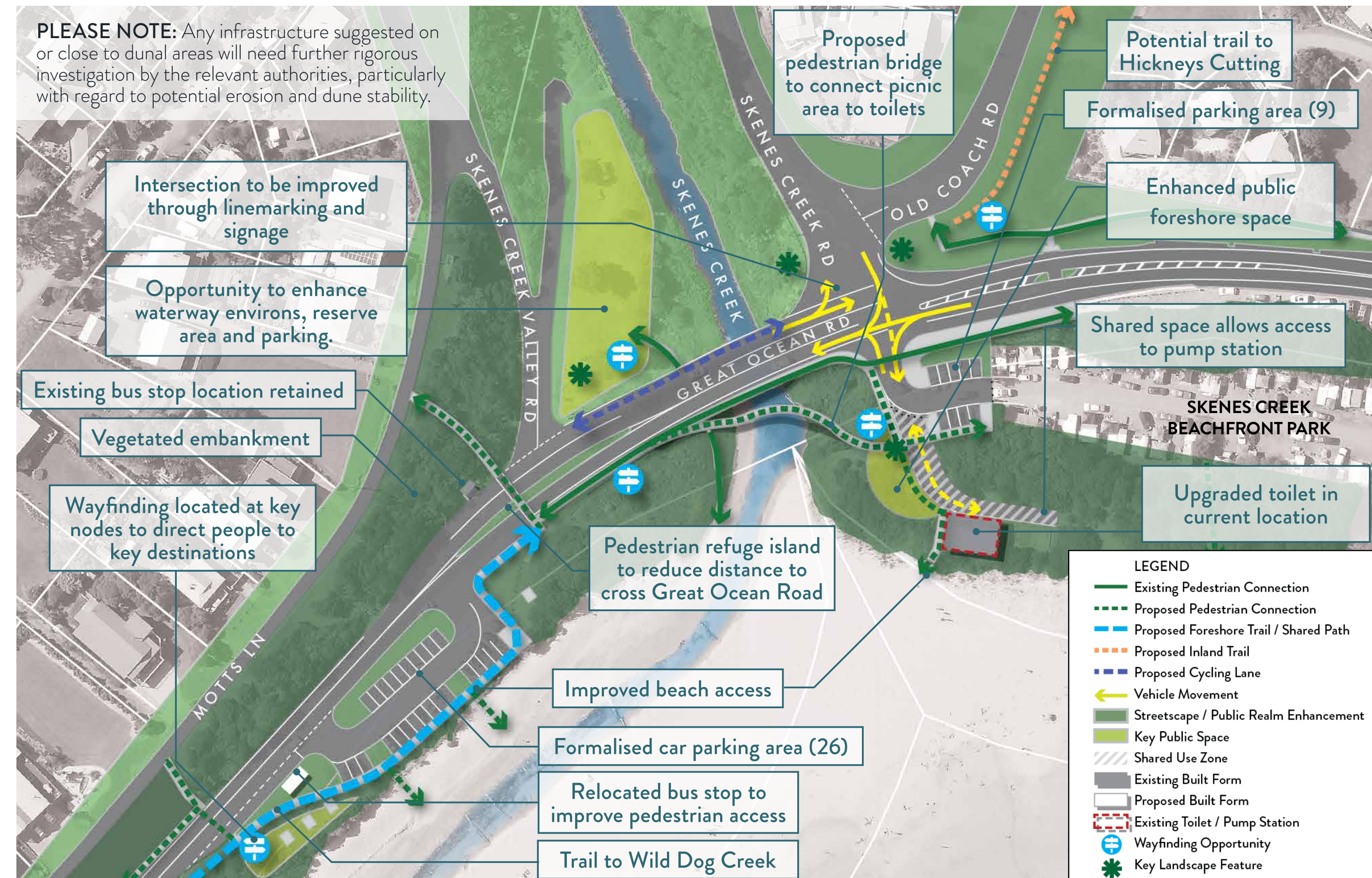
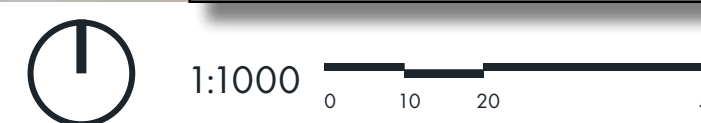
KEY ELEMENTS

The design specifically:

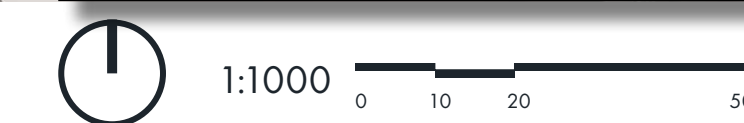
- Creates a larger and enhanced public foreshore space that acts as an activity focus for both for both visitors and locals. The additional public foreshore space will allow for enhanced pedestrian access, seating and passive recreational activities.
- Provides for upgraded public toilets in the current location (pump station retained and integrated into built form).
- Creates a more efficient and formalised parking area, setback from the foreshore.
- Provides a pedestrian bridge between the key picnic areas and the public toilets, allowing for continuous pedestrian access.
- Enhances pedestrian access to the beach.
- Allows for interpretation and directional signage to inform visitors about the unique environment and history and to help direct people to key facilities and destinations in Skenes Creek.
- Relocates the bus stop on the southern side of Great Ocean Road to provide for improved pedestrian access and safety.
- Provides pedestrian refuges along the Great Ocean Road to narrow the distances for crossing.
- Enhances Skenes Creek Reserve to improve the public amenity and provide additional seating, picnic facilities and footpaths.



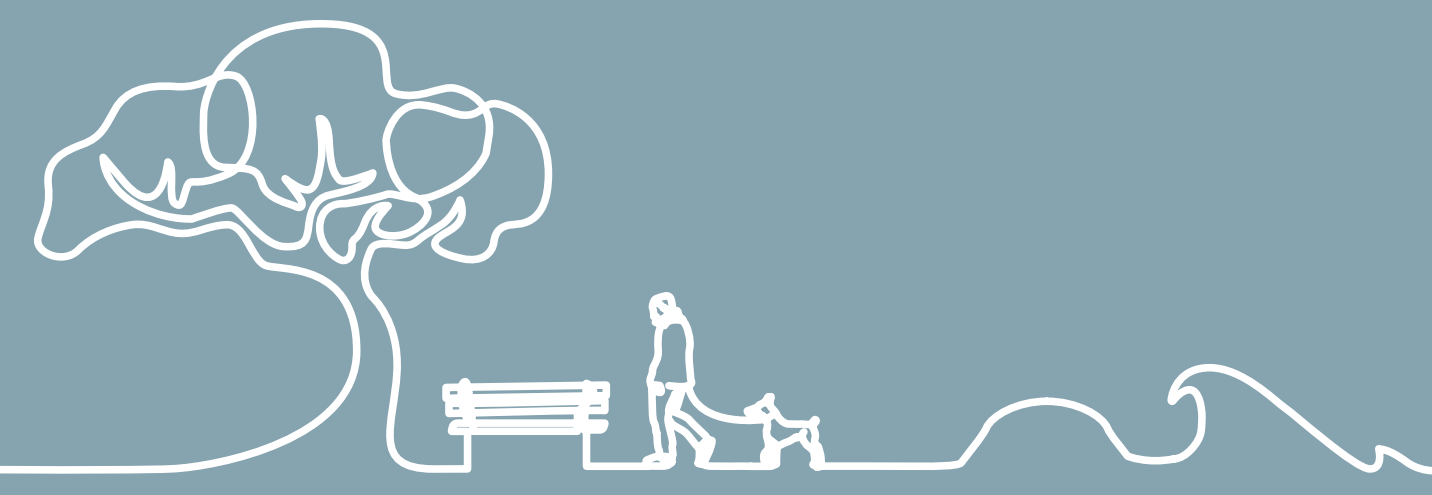
Skenes Creek Foreshore - Existing Conditions



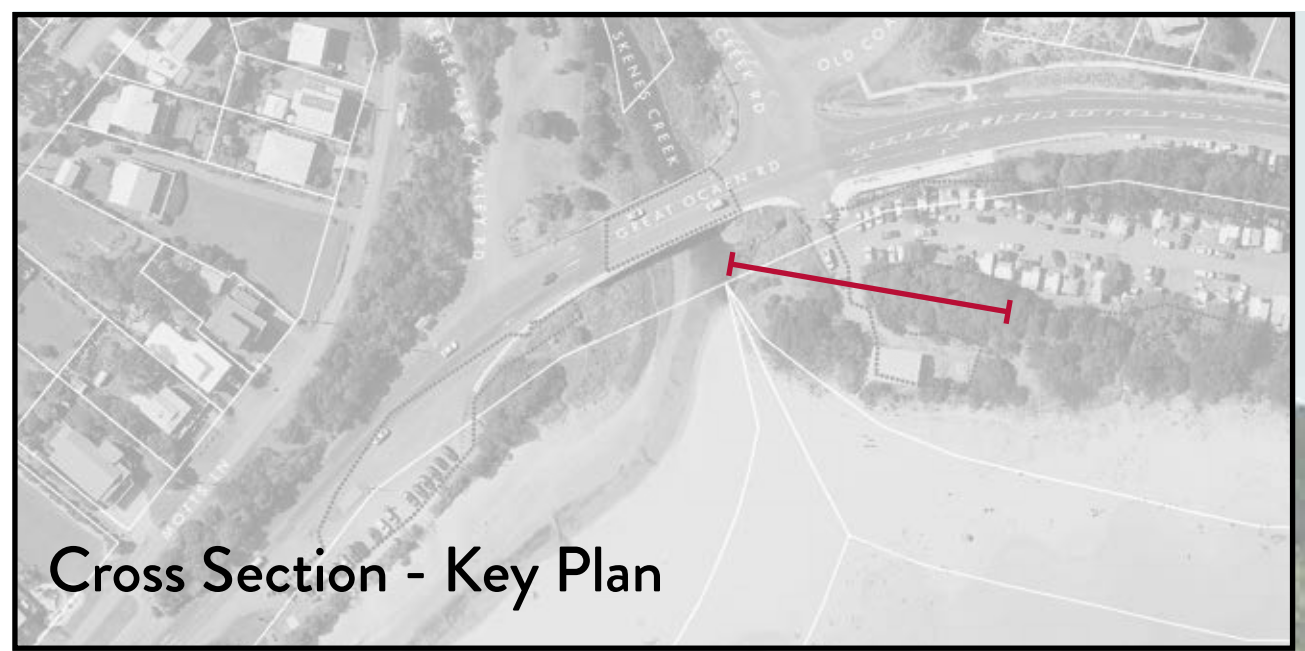
Skenes Creek Foreshore - Improvement Opportunities



10. SKENES CK FORESHORE



Cross Sections



Cross Section - Key Plan



Cross Section - Skenes Creek Foreshore - Existing Conditions

1:100 0 1 2 5



Cross Section - Skenes Creek Foreshore - Improvement Opportunities

1:100 0 1 2 5

10. SKENES CK FORESHORE

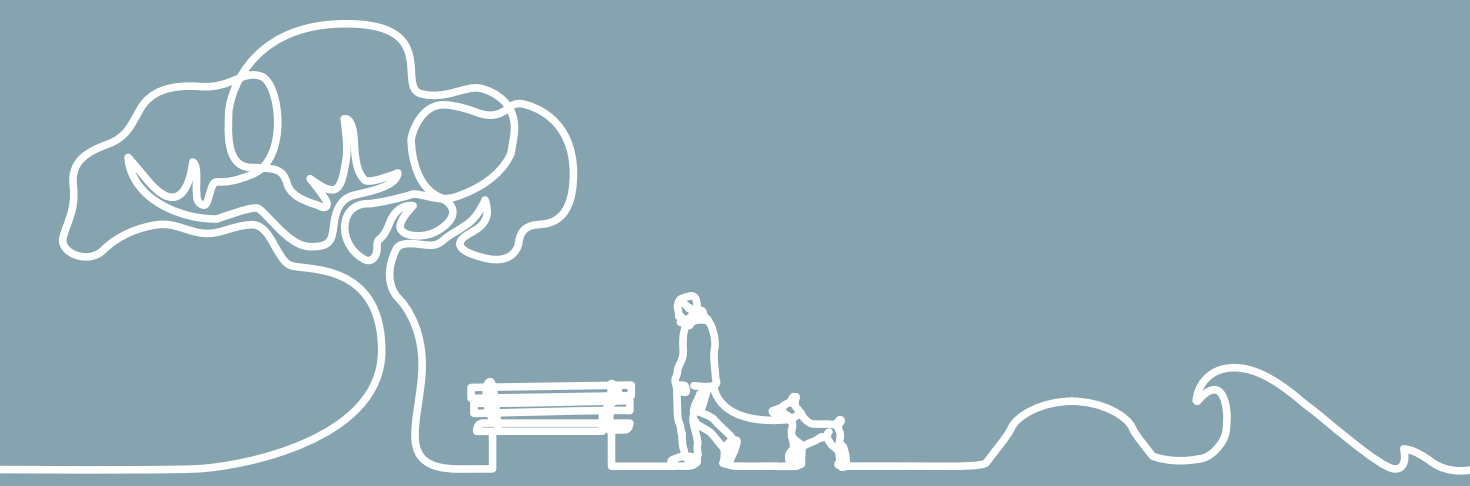


Image and Character Ideas

Image and Character Ideas are photo examples of other places provided to generate some thoughts and ideas on how the Skenes Creek Foreshore could look in the future. The photos present a range of design ideas for the area.

BUILT FORM



S.1 Contemporary built form orientated to maximise views to the water.



S.2 Natural and light weight construction materials.



S.3 Simple and contemporary built form utilizing materials reminiscent of its coastal location.



S.4 Built form to address and integrate with adjacent public realm.



S.5 Iconic built form with uses encouraging use and activity of the public realm.

PUBLIC REALM



S.6 Meandering paths providing access to the public realm.



S.7 Combination of paved and lawn areas, as well as seating opportunities.



S.8 Seating node with shade, orientated to take advantage of water views.



S.9 Open plaza with seating and canopy trees to maximise views to the water.



S.10 Improved access to beach.

PEDESTRIAN ACCESS



S.11 Simple timber pedestrian bridge.



S.12 Contemporary and feature bridge design.

CAR PARKING AREA



S.13 Formalised car parking areas

INTERPRETATION



S.14 Signage providing information about the unique qualities of Skenes Creek.



S.15 Use of natural and contemporary materials.