

Newsletter

Wye River and Separation Creek Renewal

25 AUGUST 2017

This newsletter is issued by Colac Otway Shire to provide the community key updates following the fire.

Stormwater concept design community drop-in sessions

We are holding two-community drop-in sessions next week for public comment on the draft stormwater concept designs, which have been completed by Cardno.

Please view the designs before the meeting at:
<http://www.colacotway.vic.gov.au/My-property/Fire-and-emergencies/WyeSep-Connect/WyeSep-News>

The drawings will be available on the website for comment until 19 September.

Community drop-in sessions:

- **29 August Wye River Surf Lifesaving Club**
4pm to 6.30pm with a presentation of plans at 4.15pm and 5.30pm
- **31 August Cardno Office – Level 4, 501 Swanston Street, Melbourne**
5pm til 7pm with a presentation of plans at 5.15pm and 6pm

All property owners and residents welcome.

Fee waivers

Council continues to waiver various permit fees, which has saved the property owners over \$100,000 in permit fees since the Christmas Day 2015 fire.

The State Government has been funding the operation of the One Stop Shop, however this funding has concluded and additional funding has not been possible to obtain. Council has made a decision that the permit fee waiving will cease on 1 January 2018.

Any property owners considering applying for permits should take the opportunity to do so now while fees are being waived.

Rebuilding progress update

Colac Otway Shire has now issued 35 planning permits for replacement houses under the streamlined controls together with six pre-existing permits, which allow rebuilding.

Several planning applications for replacement houses are currently being processed. When all current planning permit applications for replacement dwellings are determined there will be 46 of the 109 destroyed dwellings with a planning permit that allows rebuilding.

Retaining walls

Construction is currently taking place on Stage 5 of the retaining walls program in Wye River.

The new walls will replace retaining walls located within the Council road reserve that were damaged in the bushfire. Council is using non-combustible materials including steel I-beams and reinforced concrete sleepers for new structures to increase their resilience to future fire events.

Construction of Stage 5 retaining walls:

- 3 Durimbil Ave – 14 to 24 August - completed
- 10 Durimbil Ave – 14 to 30 August
- 16 Durimbil Ave – 30 August – 3 September

Owners of these properties have all been notified in person.

The schedule for Stage 6:

- 4 Iluka Ave – 4 to 12 September
- 8 Iluka Ave – 4 to 12 September

Owners of these properties have all been notified in person.



New retaining walls being constructed

Koonya Avenue Road works

Residents and visitors please note, major delays and road closure will occur on Koonya Avenue, Wye River – between Durimbil Avenue and Dunoon Road – from Monday 21 August through to early September 2017.

Access to Dunoon Road is via Karingal Drive.

Stanway Drive landslip remediation works

An extensive detailed geotechnical investigation has been undertaken to establish the site conditions and level of any potential rock so that design options for the remediation of landslip areas can be considered.

Currently options are being considered based upon the founding conditions, soil types and strengths, and groundwater geometry.

Any works must take into account the environmental sensitivity of work directly adjacent to the creek.

Powercor works in Wye River

Contractors will shortly be carrying out some Powercor projects at 28 & 47 Karingal Drive and 27-29 Morley Ave. These will commence on Monday 28 August.

1. The project at 28 Karingal will involve a mini excavator to trench approx. 10m on the side of the roadway and backfill within a couple of hours, having a service truck parked nearby for materials - not blocking roadway.

2. 47 Karingal Drive will have a drill on the roadway with traffic still being able to gain access past this point.
3. 27-29 Morley Ave – working on options, may need to close the road for a day depending on ground conditions for the bore – we will update Facebook and Wye Sep Connect website with details.

Some asphaltting work will also take place in The Boulevard.

Wye River & Separation Creek Building Forum

In October last year the Colac Otway Shire as auspice for the Community Connection and Wellbeing Work Group were successful in securing funding from Regional Development Victoria and the Foundation for Rural and Regional Recovery to deliver a Trades and Services Event.

What has evolved since then are two projects aimed at stimulating the economic development of trade and service businesses in the region and assisting property owners to gain knowledge and understanding of building in the region.

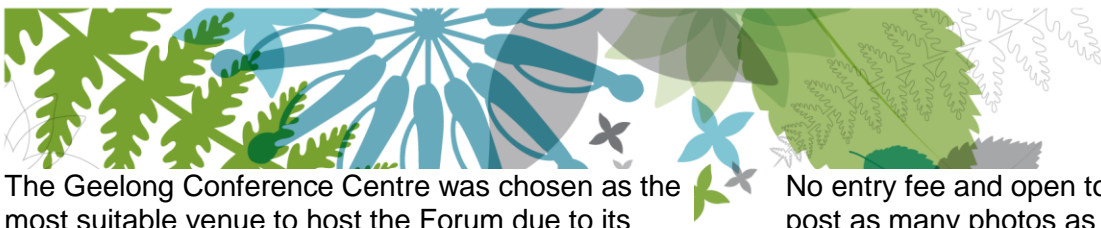
The Trades and Services directory will come in the form of a printed booklet. For the last few months Expressions of Interest have been sought from trade and service businesses in the region, offering free inclusion in the directory.

The response has been fantastic and we now have over 400 listings. We aim to have the directory completed by the end of October.

The Wye River & Separation Creek Building Forum has grown into a 'must do' for property owners and industry experts alike. It is a free event.

Now confirmed to be held at the Geelong Conference Centre on 22 October, nine key note speakers will discuss issues relating to their field of expertise.

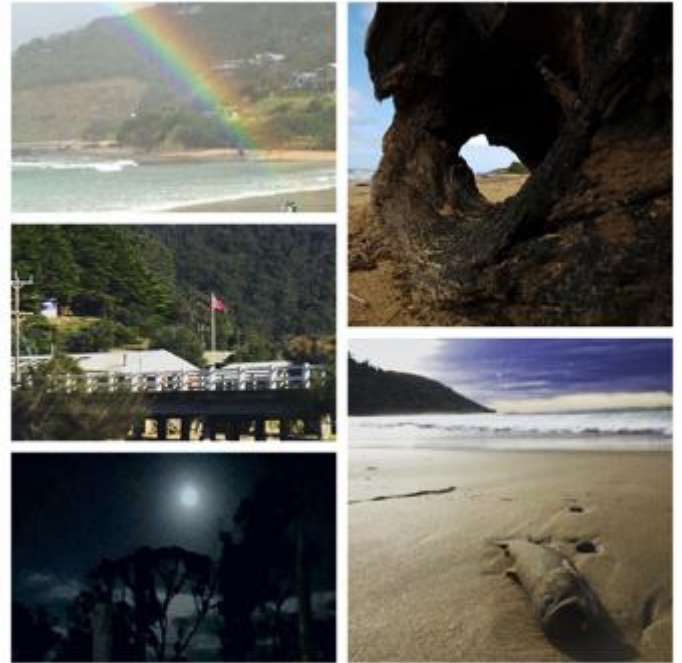
This will follow with the opportunity for property owners to ask questions and freely discuss matters that relate to their own building experience.



The Geelong Conference Centre was chosen as the most suitable venue to host the Forum due to its proximity to both Melbourne and Wye River, as well as having excellent conference facilities and ample parking for visitors.

No entry fee and open to all ages - so get involved, post as many photos as you want, spread the word why you love Wye.

To register your attendance at this free event, click here <https://www.eventbrite.com.au/e/wye-river-separation-creek-building-forum-at-geelong-conference-centre-tickets-36992481508>



Some of the amazing photo entries to date

Accommodation for Fire Affected Community Members

The following offers of accommodation are available to members of the Wye Sep communities who lost houses or who suffered damage during the 2015 Bushfire.

Scully Mill Separation Creek

Free accommodation at Scully Mill for owners of destroyed homes is still available following generous action of a private benefactor in funding 100 nights accommodation.

The offer includes a suite accommodating two people, although arrangement can be made to accommodate more. Available for short stays on weekdays or weekends, but not on long weekends or high season. No pets, and cannot be used by builders or contractors, only people who lost properties.

To book the accommodation, please contact Peter Jacobs on 5289 0462 or email peterjacobs@iprimus.com.au

WYE RIVER & SEPARATION CREEK BUILDING FORUM

Sharing Experiences & Solutions



An interactive building forum designed to assist land owners to navigate the building process and get advice from industry experts.

Key Note Speakers

- Anna Borthwick | Planner**
Colac Otway Shire Bushfire Recovery Planning Coordinator | Plan A Town Planning & Consultancy
- Dave Horwood | Geotechnical**
AGR GeoScience
- Josh Crosbie | Architect**
Josh Crosbie Architects
- Kris Thomas | Building Designer**
Kris Thomas Building Design
- Angus Gordon | Building Surveyor**
Colac Otway Shire Building Surveyor Bushfire Recovery
- Jack Everitt | Builder**
Great Ocean Road Builders
- Dave Kohout | Plumbing**
H2O Plumbing Solutions
- Mike Robinson-Koss | Landscaping**
Otway Greening
- Peter Newland | Home Owner**
Peter has completed rebuilding his property at Wye River

Plus many more industry experts available for discussion and advice.

This is a free event for members of the Wye River, Separation Creek and Kennett River Communities
LUNCH AND REFRESHMENTS PROVIDED

SUNDAY
22 OCTOBER
11am till 3pm

GEELONG CONFERENCE CENTRE
EASTERN GARDENS
20 Adams Court, East Geelong

TO REGISTER OR ENQUIRE
Contact Yvette Hill - yvette.hill@colacotway.vic.gov.au

THIS EVENT IS PROUDLY SUPPORTED BY



Wye Winter Photography Competition



Don't forget - post your WINTRY photos of the region on Facebook or Instagram - **#wyeinwinter** or **#wyeilove**.

The Ocean and Otways are stunning in winter - be in the running for one of the prizes, which will be announced on Melbourne Cup Weekend.



Scully Mill

Apollo Bay Recreation Reserve

The Otway Coast Committee are offering the following rates which have been discounted to assist and support community members through the rebuilding process.

Please contact the OCC bookings team on 5237 6577 and quote (WyeSep) when making your booking. Proof of address at the building site or a rates notice will be required to obtain the below pricing.

The below offer is only available through the Off Peak season which concludes at the end of November 2017 and excludes any Public Holidays, Grand Final Weekend and School Holidays.

Accommodation Type	Number of People	Rate	Extras
Cabins:	2 Adults	\$50.00	Extra Adult \$12.00 ea. Extra Children \$8.00 ea
Powered Site:	2 Adults	\$30.00	Extra Adult \$12.00 ea. Extra Children \$8.00 ea.
Unpowered Site	2 Adults	\$15.00	Extra Adult \$12.00 ea. Extra Children \$8.00 ea

Community Resilience Committee Report

The CRC met at the end of July and decided to convene two community meetings:

1. **At Wye River on Sept 2, 10.30 - 12.30, Wye River Surf Life Saving Club.**
Topics include: Reticulated Drainage Plan - discussion and feedback; Emergency Access Between Wye River and Separation Creek; Parks Victoria support for Wye River area projects; Community Fire Prevention Plan; Wye River Fire Recovery Evaluation. Mayor Chris Potter, Senior Colac Otway Shire, Parks Vic and Emergency Management Victoria staff will be in attendance.
2. In Melbourne in September. Arrangements are being finalised and will be promoted through WyeSep Connect and Facebook.

At the July meeting we discussed a number of matters with agency staff including Paddy's Path (now expected to be reopened by the end of the year), the sale of the Donleavy Fitzpatrick estate to a private individual, preliminary information about the EMV commissioned evaluation of recovery from the fire, tourism issues and walking tracks, vegetation and fire management. Minutes are at: <http://www.colacotway.vic.gov.au/My-property/Fire-and-emergencies/WyeSep-Connect/Community-Resilience-Committee>

Stormwater Management

COS has engaged Cardno Victoria to develop a stormwater drainage design for the Wye/Sep townships and conducted drop-in sessions in Melbourne and Wye in early June. A second round of community consultation is being held in August.

Retaining Wall Construction

COS has commissioned the construction of 21 retaining walls within Council road reserves damaged in the 2015 bushfires. Major delays and road closure will occur on Koonya Avenue Wye River (between Durimil Avenue & Dunoon Road August 21-25).



Power restoration projects - Bass & Iluka Avenues

Conventional pole and wire power supply has been restored to Bass Avenue. Iluka Avenue property owners have collectively agreed to meet the additional cost of underground cable, with project commencement to be confirmed by Powercor.

Flora, Fauna and Beachscape (FFB) Work Group Report

The Work Group met in July and the minutes are at: <http://www.colacotway.vic.gov.au/My-property/Fire-and-emergencies/WyeSep-Connect/Environment>

The replanting support program for private properties has had many expressions of interest already, work is progressing well on the FFB demonstration fire resistant garden above the pub, and Harrington Park is reopen and the pathway complete.

FFB and community members met with DELWP to discuss approaches to making the steeper sections of Paddy's Path accessible to the community. Parks Victoria have some funding to support recovery of communities affected by the Wye River – Jamieson Track Fire'. Funded initiatives might be tourism, environmental, cultural or visitor-related infrastructure or offerings on public land. There will be an opportunity to discuss ideas at the September Community Meetings. Contact the Community Resilience Committee via crcwyesepcommunityreps@gmail.com

Vic Roads update August 2017

Paddy's Path

With soil nailing almost finished below 21-25 Iluka Avenue, VicRoads crews are laying steel mesh and erosion control matting on the Paddy's Path hillside. This combined treatment is anchoring what had been an unstable hillside that collapsed onto the road after saturating rains in September 2016.

The pathway in this vicinity has been restored with concrete laid to both approaches of a pedestrian bridge that is due to be erected at the end of August.



Workmen laying steel mesh on the Paddy's Path hillside at Wye River

Soil nailing

Another section of the Paddy's Path hillside, between the end of the major retaining wall on the Great Ocean Road to Stanway Drive, Separation Creek, will also be soil nailed.

Work is expected to begin mid October to stabilise this section to protect the face of the hill.

Landslides

Work is progressing on the landslide, which struck the ocean side of the Great Ocean Road, six kilometres west of Wye River, in early August.

The landslide area has been excavated to construct a 45m-long retaining wall, up to 4.5m tall. It is expected that work will be completed late September.

Traffic management is in place. Expect minimal delays.

A second landslide area, on the ocean side of the Great Ocean Road at Separation Creek, will be remediated mid September with a 45m steel and concrete retaining wall.

A small ocean-side landslip site, opposite Wye Road near Boggaley Creek, will be stabilised with a 25m steel and concrete retaining wall. The four-week project is scheduled to begin mid-October.



The Great Ocean Road retaining wall taking shape 6km west of Wye River

Wire netting

Nine rock wall sites on the inland side of the Great Ocean Road between Lorne and Cape Patton are being secured with wire mesh.

Three sites just west of Lorne and two west of Wye River have been completed. Work at the other four sites is still underway.

All cliff faces are being descaled, where loose material including rocks weighing up to one tonne, is removed before wire net is anchored to the cliff face to prevent any future rock falls from reaching the tourist road.

This series of projects is scheduled for completion early October. Traffic management is in place. You may experience minor delays.

In mid-September, work will start on installing rock-fall netting at six additional cliff face sites just west of Kennett River. This nine-week project is scheduled to be completed mid December.

Stabilisation

Stabilisation works continue on about 50 hillsides, between Kennett River and Jamieson River, which slope down to the Great Ocean Road. The faces of these hillsides had slipped onto the road after the 2016 torrential rain.

Their faces were cleaned 12 months ago. They will be stabilised with 1.5m-long soil nails, steel netting and erosion control mat. This project is expected to be completed mid October.

Grey River Bridge

Work to replace the bridge at Grey River is scheduled to begin during the first week of September.

The bridge will be replaced with a new single-span structure. About 130m of the Great Ocean Road will be realigned both sides of the bridge approach. The project is due to be completed in May 2018.

The new bridge is being constructed on the ocean side of the old bridge. This will mean two lanes of the Great Ocean Road will remain open for all traffic for much of the construction phase.



An artist's impression of the new Grey River Bridge

Health and wellbeing update



As we move into the second half of second year, we wish to offer support and update

information about obtaining health and wellbeing support.

While most people are managing to make progress, for some this is still a difficult journey. We acknowledge that for many people there are ongoing problems that come with rebuilding, or even considering to rebuild.

This process is made more difficult for those who have lost holiday homes, as it means it's difficult to actually spend time in the area they love, to re-establish connections with the land, the people and the sense of belonging that is so important for us all.

We acknowledge this and wish to reiterate that support is available.



People who are feeling affected by the Wye Rivers fires of 2015 and require counselling or support should first visit their General Practitioner and be referred to an appropriate counselling service. All individuals affected are entitled to up to 10 counselling sessions at no cost. If you require additional sessions, the GP will speak with the Department of Health and Human Services regarding extra sessions.

Below are support services provided by Lorne Community Hospital:

1. **Counselling services** are available through the Lorne Medical Centre to any community member who can come to Lorne and surrounding areas. To access the counsellors you need an appropriate plan which will be completed by a GP at Lorne Medical Centre at no cost to you.

Our Counsellors are: Dr Jay Robinson (Clinical Psychologist) and Rameen Razmara (Counsellor). For these counselling services call the Lorne Medical Centre Reception on 5289 4333.

The following Counsellors are also available in the local area and can also be accessed at no cost if you obtain a Mental Health Care Plan through any GP.

- Kay Swift (Social Worker) practicing in Geelong & Lorne M: 0407 218 313
- Tanya Harkness (Psychologist) Apollo Bay M: 0419 002 661
- Dr Barbara Hindson (Clinical Psychologist) Birregurra M: 0416 510 268

2. Other Services of Lorne Medical Centre

- The Lorne Medical Centre is open Monday to Friday from 9am till 5pm and is on the lower ground floor of the Hospital – 5289 4333.
- Apart from the above counselling services, the Medical Centre offers range of health and wellbeing services. Please phone 5289 4333.
- Free comprehensive health checks are available for all Wye River Separation Creek and Kennett River community members at Lorne Medical Centre 5289 4333.

3. Lorne Community Hospital Services Include

- 24 hour Urgent Care – 5289 4300
- Comprehensive Health and Wellbeing services – 5289 4300 - 9am to 5pm Monday to Friday

Remember, for all medical emergencies call 000. Lifeline Ph: 13 11 14. Safe Steps Family Violence Response Centre Ph: 1800 015 188. Beyond Blue: 1300 224 636

Amy's Gran Fondo

On Saturday 16 and Sunday 17 September Amy's Gran Fondo will return to the region of the Great Ocean Road and Otway Ranges. Over 6,000 riders will visit our region and to ensure the safety of the event participant's and the community the following temporary changes will be implemented.

Please note, Emergency access will be maintained at all times. In case of emergency dial 000. If you need access through the road closures during this time call the event management team on 03 9595 3000 to discuss your options.

Road Closures

Appropriate traffic control measures as approved by Vic Roads, Victoria Police and Colac Otway Shire will be temporarily installed on all intersections. For more details about the road closures and map click here <http://amysgranfondo.org.au/event-information/road-closure-information/>