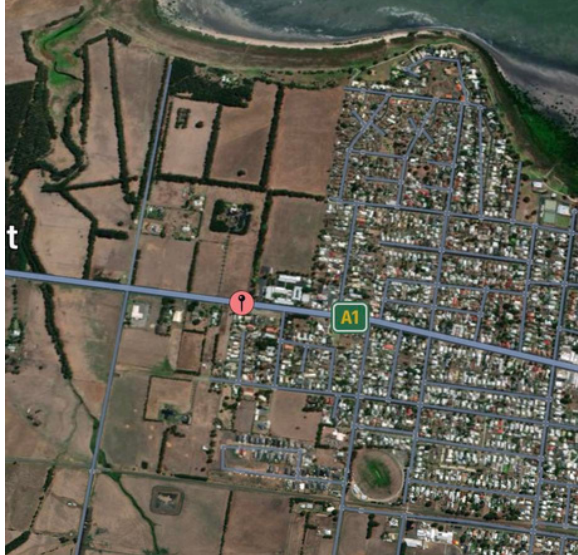


CrossXpollinationN 2022

Signage on Road Reserves



Western Entrance

The location for the western entrance to Colac will be on the northern side of the highway at approximately 431-437 Prince Highway, as shown in the images to the left.

This will be at the location indicated by the dropped pins and the x.

The sign is corflute and will be attached securely with zip ties to wooden dropper posts.

The location is beyond the second change of speed to 60KM zone and should not distract any drivers from this speed change which they should already have made.

Staff will park inside the driveway of what was previously the old high school and thereby be well off the road.

Staff will wear High-vis vests for safety reasons and remain well off the road at all times.





Eastern Entrance

The location for the eastern entrance to Colac will be on the southern side of the highway at approximately 6415 Prince Highway, as shown in the images to the left.

This will be at the location indicated by the dropped pins and the x.

The sign is corflute and will be attached securely with zip ties to wooden dropper posts.

The location at a distance from the change of speed to 60KM zone and after the initial warning sign for 60KM zone and should not distract any drivers from this speed change which they are already preparing to make.

The sign will be located behind the safety barrier.

Staff will park beside the driveway of the nearby house and thereby be well off the road.

Staff will wear High-vis vests for safety reasons and remain behind the safety barrier.



Northern Entrance

The location for the Northern entrance to Colac will be on the southern side of the highway at approximately 22-30 Colac-Lavers Hill Rd as shown in the images to the left.

This will be at the location indicated by the dropped pins and the x.

The sign is corflute and will be attached securely with zip ties to wooden dropper posts.

The location at a distance from the change of speed to 60KM zone and after the initial warning sign for 60KM zone and should not distract any drivers from this speed change which they are already preparing to make.

The sign will be located behind the safety barrier.

Staff will park adjacent to the sign location and well off the road.

They will leave hazard lights on in the vehicle.

Staff will wear High-vis vests for safety reasons and remain well off the road at all times.

