

'Pride of Place'
Urban Design Framework Plans
for
Cressy

Prepared for each community
on behalf of:
The Colac Otway Shire

January 2002

Reviewed 2007

Funded by:

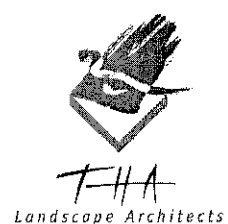


Department of
Infrastructure

Administered by:



Prepared by:



*Urban Design Framework
Prepared by:*



T-H-A

Landscape Architects

202 Grant Street
BALLARAT VIC 3350

Phone (03) 5333 5942

Fax (03) 5333 5488

Email: thala@netconnect.com.au

January 8, 2002

1.0 Background

In June 2001 following funding from the Department of Infrastructure, the Colac Otway Shire engaged THA Landscape Architects to prepare Urban Design Frameworks for the following communities within the Shire:

- Beeac
- Cressy
- Lavers Hill
- Swan Marsh

Design proposals and development strategies prepared for each township are based on the project brief prepared by the Colac Otway Shire, combined with community and steering committee meetings, discussions with key community members, a comprehensive township site analysis, a review of available literature including the Colac Otway Shire Planning Scheme, analysis of aerial photography and our professional response to the visual character and community needs for each township.

This report and associated plans have been prepared as a basis for:

- identifying the existing character of the township;
- identifying problems within the structure of the township;
- establishing a framework for the future direction of urban design development in the township.
- recommended design concepts and actions to be undertaken in the short, medium and long term.

The study has been prepared with reference to the *Urban Design Planning Note 3 – Urban Design Frameworks*, published by the Victorian Government's Department of Infrastructure.

The Urban Design Framework will be an important tool for sourcing funds for implementation of specific actions. Further detailing of design concepts is required to more accurately estimate the cost of works and enable tendering and appropriate construction.

The Steering Committee met four times during the study period and was comprised of the following representatives:

- Councillor Warren Riches (Mayor - Colac Otway Shire)
- Cressi Golding (Business & Community Development Officer - Colac Otway Shire)
- Gary Dolan (Capital Works Co-ordinator - Colac Otway Shire)
- Karen Paton (Leisure & Culture Co-ordinator - Colac Otway Shire)
- Kirsty Miller – (Regional Planner – Department of Infrastructure)

Other consultants who worked in consultation with THA Landscape Architects and who assisted in the preparation of the Urban Design Framework plans included:

- Brendan Mooney – Brendan Mooney & Associates Architects (Ballarat)
- Paul McCuskey – McCuskey Consulting (Ballarat).

The background section of the report relates to the project in general, including components that are generally common to all four townships. The following sections / chapters generally relate to each specific township / community.

The structure of this report is written with chapters for individual townships to allow the report to be 'pulled apart' and stand alone reports provided for each community. This format has created some repetition throughout the report.

1.1 Project Scope

The following points provide a list of key issues that required specific attention as stated in the project brief developed by the Colac Otway Shire:

- Provision for a clear strategic direction for each town;
- Consideration of the physical and natural environment of each town;
- Identification and engagement with stakeholders and stakeholder issues;
- Consideration of the community and commercial infrastructure in particular community facilities, the main street and its presentation;
- Recognition of heritage assets;
- Initiatives to improve economic performance; and
- Initiative to improve the residential environment.

An additional requirement of the brief was for the Urban Design Framework to capture the essential urban design elements of each town including:

- Heritage attributes and features;
- The physical identity and the local cultural elements;
- The critical elements of community infrastructure and character; and
- The economic and social attributes of the town.

The Urban Design Framework for each town should provide and identify:

- An analysis of the towns' design elements;
- A plan indicating the concepts to be developed and actions to be taken; and
- A series of cost effective and sustainable options for action by the community and Council.

1.2 Community Consultation

To achieve a clear understanding of the specific needs of the community, the project brief required a high level of community consultation from the commencement of the project and in particular during the analysis stage of the project and during the community design assessment and review stage.

Consultation was also required with other key players / organisations including Vicroads, the Corangamite Catchment Management Authority, Landcare groups and relevant community groups and organisations in each town.

The methods of community consultation was intended to build on previous community liaison undertaken by the Colac Otway Shire, in particular that undertaken as part of the StreetLIFE program coordinated by Brenton Hancock. The consultants and steering committee were conscious of not excessively 'covering the same ground' as that of StreetLIFE.

The consultation program developed for the Urban Design Framework was intended to demonstrate that the Colac Otway Shire had 'moved forward' and was acting on the outcomes of previous consultation / studies.

A summary of the community consultation methodology undertaken for each town follows. Note this is a generalised description for the four towns, variations occurred for individual towns:

- Initial media release prepared for the Colac Herald and for individual; community newsletters to introduce the consultants and provide a brief summary of the urban design process and intended timelines / outcomes.
- Preliminary steering committee meeting with the specific aim of this meeting being to collect available base information and to be briefed by Council officers and Mayor Riches about each town.
- As part of the initial site inspection for each town the consultants spoke with interested locals and / or business owners in the town to outline the process and obtain direct feedback and background information about the town. This provided invaluable information regarding local issues that are of importance to the community.

- The first of two public meetings was held in the evenings at each township. These meetings were attended by Cressi Golding, Mayor Riches and occasionally the local Riding Councillor. The primary aim of the initial public meetings was to receive feedback from the community with regard to the way the community felt about their community, the community aims for the future development of their township, likes and dislikes about the township, visions for the future development of the township and specific issues local relating to the community / township development plans.
- The secondary aim of the initial public meeting was to explain the project to the community, and present an outline of the design and consultation process and timelines for the project. Mayor Warren Riches chaired the majority of all public meetings.
- Follow-up media release to the Colac Herald and individual community newsletters to outline the key issues raised at the initial public meeting and to inform the broader community of the issues of importance to each community. This media release also stressed the importance of all community members being involved in the design and consultation process as a means of 'having a say' in the future development of their community.
- Presentations to the Cressy and Swan Marsh Primary School children about the role of landscape architects and the importance of urban design for the future development of towns in a planned and co-ordinated manner. A simple survey was prepared to obtain views from school children regarding their town and in particular their likes, dislikes, preferred after school activities and ways of getting to school. This process provided useful feedback to assist in the development of recommendations for each community and hopefully the involvement of the youth of the town in the design and consultation stage of the Urban Design Framework will reap benefits to each community in the future.
- Following display of the preliminary Urban Design Frameworks for a minimum period of 7 days to enable the community to become fully familiar with all Urban Design Framework recommendations, the second public meeting was held in each town and chaired by Mayor Riches. The format of this meeting included an introduction by Mayor Riches, a short presentation by the consultants to outline the key features of the Urban Design Framework, with the majority of the meeting dedicated to feedback from the community and associated discussion. This approach enabled direct discussion of relevant issues by the community in the forum of a public meeting. These meetings were generally structured in the form of a typical public meeting with the exception of Swan Marsh that, due to the smaller numbers, was conducted in the forum of a workshop. (Note: It was generally felt by each community and the Colac Otway Shire that attendance numbers for each community meeting were good).
- A community survey sheet was also developed to obtain specific feedback regarding the preliminary Urban Design Framework. Survey sheets were made available at the start of the concept plan review stage to enable the consultants to obtain a clear indication of the community's perceptions in relation to the Urban Design Framework. The survey response sheets also provided an opportunity for individuals to respond to the framework by a method other than a public meeting. The community response sheets prepared for each township are tabled later in this report.
- The response sheets also provided the consultants with the opportunity to review and assess the projects deemed by the community as being important – therefore rating the projects from highest to lowest priority, based on community feedback. Based on the survey results, the key projects proposed for each township were rated based on community feedback to determine the highest to lowest priority.
- Rating of each project into an order of priority provides important information for the Colac Otway Shire for long-term capital works budgeting, and sourcing of funds from external organisations.

THA Landscape Architects would like to acknowledge the coverage provided for the project by the Colac Herald. The paper was very generous in the amount space it allocated to the project, thus increasing exposure and community understanding of the project.

Cressy Urban Design Framework

Township Overview

The township of Cressy is located on the Colac – Ballarat Road, approximately midway between Colac and Ballarat, with the town centre located 700 metres to the south of the Hamilton Highway. No commercial ventures associated with the town have frontage to the Hamilton Highway.

Cressy is situated near the eastern banks of the Woody Yaloak River. The original crossing point in this stretch of the river was at the western end of Duverney Street and was the basis for the original settlement of the township as a result of the commercial development that established in the vicinity the Frenchman's Inn Hotel – the first commercial enterprise in the town.

The physical layout of Cressy has primarily been in response to transportation. The original settlement being located near the ford over the Woody Yaloak River and the subsequent relocation of the town centre to the north, in response to the activity created by the railway station which was in operation between 1913 – 1977.

Cressy, like many small rural towns, has suffered decline as a result of a declining rural population, limited work opportunities and uncertain agricultural commodity markets. The decline within the township is obvious due to a number of closed businesses and freehold allotments for sale.

The remaining commercial enterprise in Cressy is the Frenchman's Inn Hotel which has now taken over the operations of the previous General Store / Post Office. Other facilities available to the community include the Cressy Bowling Club, the Uniting Church, the Cressy Primary School, and the Public Hall.

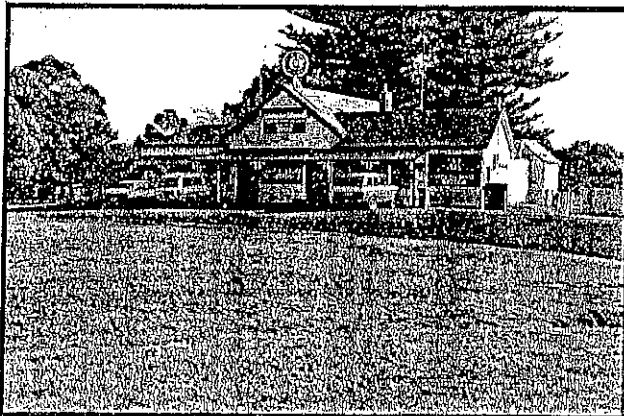


Photo 4: Frenchman's Inn Hotel – Cressy



Photo 5: Prowse & Co Store - Cressy

Duverney Street, the original town centre, is the most intact commercial / residential precinct in Cressy. Due to the relocation of the commercial centre of Cressy closer to the railway station in the early 1900's this street began to decline much earlier than other streets throughout the town. The buildings, road alignment, median strip and associated street tree planting along Duverney Street combine to create a small, interesting historic precinct.

The Cressy Community Activities Group is working hard to overcome the physical, social and visual decline of the town and make the town a more attractive place to live and for visitors to stop. For those interested in the early pastoral development and history of the western district, Cressy is of some significance. Recommendations for the Urban Design Framework include improving the historical interpretation throughout the township.

The annual sheep dog trial held on the Cressy Recreation Reserve should be fully supported by the community as means of utilising the facilities at the reserve and as a way of attracting additional visitors to the town. This annual event has local significance to the Cressy community.

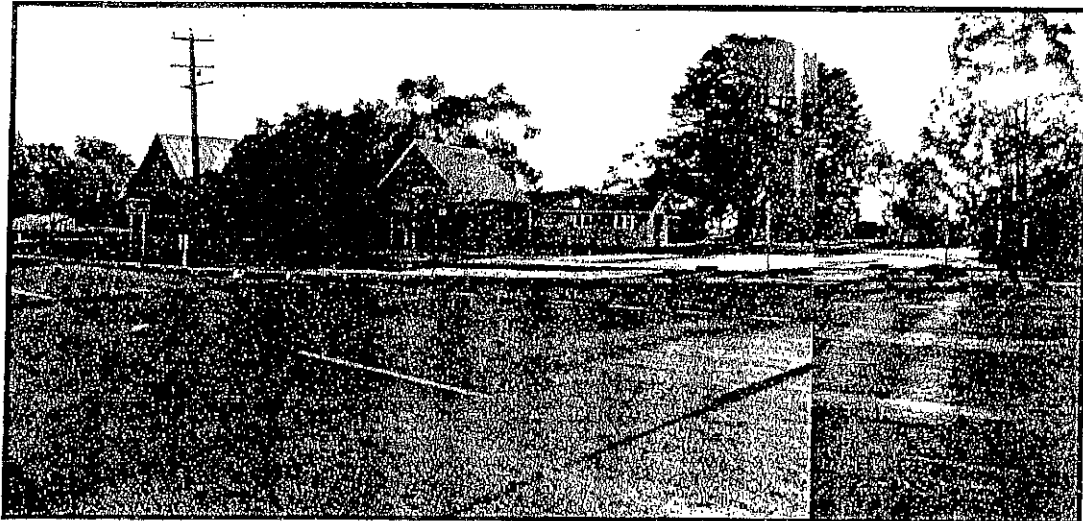


Photo 6: Intersection of Lyons Street, Yarima Road and New Station Street - Cressy

Township Character

Cressy has developed along New Station Street and Lyons Street which are essentially township street names for the Colac – Ballarat Road. The alignment of these roads has created distinct bends at the northern and southern entries into the town. Other streets with residential development include Yarima Road and Duverney Street which, due a combination of traffic controls and a lack of destination, are generally roads used by locals only.

The character of Cressy indicates that it once had a considerably larger population than currently exists due to the number of commercial / former commercial buildings throughout the town. The impact of the closure of the Cressy Railway Station and associated railway jobs affected the townships population, as is the slow decline of the rural population towards major urban centres.

The township has a moderately extensive tree cover throughout the public and private land areas that have been established both for commemorative purposes and possibly as a direct response to the exposed conditions of the western plains. Street tree species include Sugar Gums, mixed Eucalypts, Cypress and Elm trees.

Historical Significance

Cressy was originally established as the site of a ford over the Woody Yaloak River in the 1830's along the transport route from Elephant Bridge to Geelong.

In the early 1900's, the original town centre (Duverney Street), the site of established businesses including the hotel, grocer & hardware merchant, saleyards, bakery and bank, began to shift north towards the railway station. The relocation of the town centre has created a township that is made up of two parts generally separated by agricultural land and low-lying river flats. The northern township area is centred along New Station Street and Yarima Road and includes the Cressy Primary School, the store, the hall, the Uniting Church, Police Station Country Fire Authority and the site of the former railway station. The southern township area along Duverney Street includes the following businesses / services – the Frenchman's Inn, the Child & Maternal Health Centre and the former saleyards. This area also has well established residential development including the use of former businesses for residential purposes.

Cressy was also fortunate to be sited at the crossroads of two railway lines, the north - south aligned Ballarat – Colac line and the east – west aligned Gheringhap to Maroona line. The strategic location of Cressy meant the town was home to many Victorian Railways employees including stationmasters, platform staff, locomotive crews, service personnel shunters and guards. As railway usage decreased after 1945 the population of Cressy began to decline.

A site approximately 1 kilometre to the east of Cressy was chosen for a WW2 RAAF Air Combat Training Base. This air base was in use during the Second World War and was home to significant numbers of personnel. The site is now within a paddock but with considerable evidence of its former layout / extent including tarmac, concrete building footings etc.

The Cressy township is predominantly residential in character, (with the housing style generally post 1900's) interspersed with service (fire and police) commercial and former commercial buildings. It is noted in the Colac Otway Heritage Study (October 1998) that Cressy has been so affected by grassfires since the 1850's that its architectural character reflects the dates of major fires. The last major fire was the 'Wallinduc – Cressy fire on February 12, 1977.

Whilst being in a state of decline the former Prowse & Co. store is strategically located on the Duverney Street corner with considerable exposure to passing traffic. Its' location completes the historic Duverney Street streetscape. Preservation of this building if at all possible would be a positive outcome to preserve the physical and visual structure of Duverney Street.

A range of materials and built elements combine to create the historic character & fabric of Cressy. These elements include:

- Duverney Street including the buildings the median strip and associated street trees;
- The established street trees throughout the town including the Avenue of Honour;
- The Frenchman's Inn;
- The Uniting Church including the former bluestone church;
- The former saleyards.

The Cressy community feel strongly about the built heritage of the town and wish to ensure that any future development within the town and the streetscape is undertaken with due consideration to the history of the town. In summary, this includes preservation of significant buildings and street trees including the Avenue of Honour.

Sites of potential cultural heritage significance within the Cressy township, as identified in the Colac Otway Heritage Study – Stage One (October 1998) include:

- Avenue of Honour (Colac – Ballarat Road)
- Monash Bridge (Woody Yaloak River)
- Ford remnants (Duverney Street)
- Frenchman's Inn (Frenchman's Inn Road)
- Masonic Hall (Colac – Ballarat Road)
- Police lock-up (Main Street)
- Cressy Primary School (Yarima Road)
- St. Andrews Church (Colac – Ballarat Road)
- St. Andrews Hall (Colac – Ballarat Road)
- Water tower (New Station Street)

Other buildings with historical significance to the Cressy streetscape include:

- The former J.P. Prowse & Co. Grocer & Hardware Merchants Store (corner of Duverney Street and Lyons Street).

Setting and Landuse

Cressy is surrounded by generally flat farmland typical of the western plains. The traditional agricultural landuse associated with the town has been sheep and wool production. Over recent years the landuse has diversified to include cropping. The most intensive commercial and residential development in the township has occurred along Duverney Street, New Station Street and the southern end of Yarima Road. These areas have generally retained views or links to adjoining rural land which surrounds and is interspersed throughout the township.

Cressy is an established town with limited but vital services including:

- A Primary School
- Hotel
- Maternal & Child Health Service
- Police Station
- CFA shed
- Recreation reserve with excellent public hall facilities
- Bowling Club
- Public Hall
- Uniting Church

The above facilities provide the Cressy community with 'the essentials' only. The services remaining in the township, in particular bread, milk newspapers and postal services are important to preserve for convenience purposes and to maintain the liveability of the town from the local residents viewpoint, in particular for the elderly. The closest towns with comparable services include Rokewood (18 kilometres to the north) and Beac (19 kilometres to the south).

Infrastructure

The available infrastructure services (additional to power and telephone) to the residents of Cressy include:

- A reticulated water supply (managed by Barwon Water).

Cressy is not serviced by sewerage treatment facilities or gas supply. These constraints are unlikely to restrict development in the town – based on recent levels of development.

Planning Zones

With the exception of a number of small specific zones the planning zones within the township of Cressy are predominately comprised of Township Zone (TZ) surrounded by Rural Zone (RUZ) to the south and east (see planning zone map over page). Cressy is located on the northern Colac Otway Shire municipal boundary with the Hamilton Highway and Woody Yaloak River forming this boundary. Based on existing landuse it is assumed that the planning zone to the north of the municipal boundary is Rural Zone.

Specific planning zones within the township have been developed for particular landuses including:

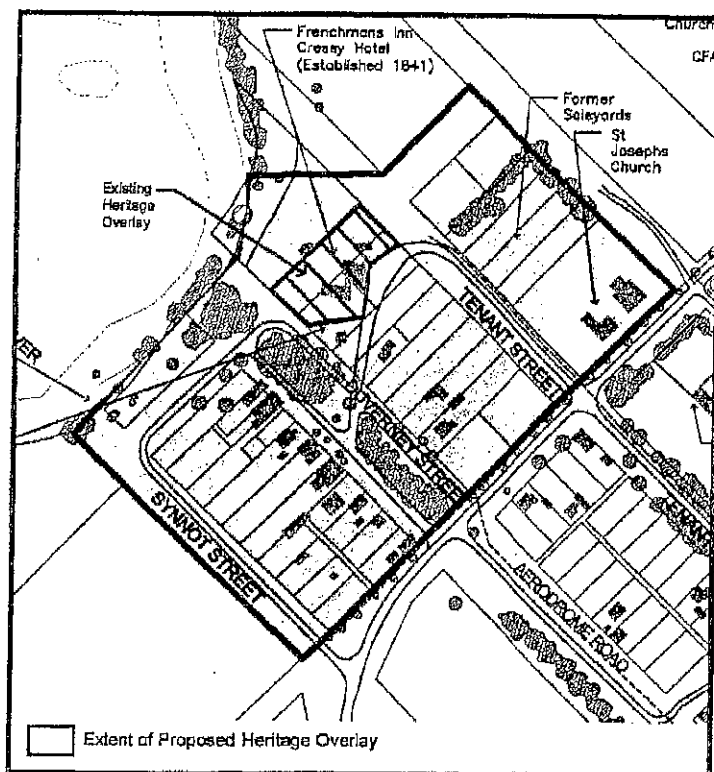
- The Recreation Reserve & Bowling Club & surrounds
- Cressy Primary School
- Cressy Cemetery
- Cressy Hall
- Indigenous grassland reserve on the corner of Yarima Road & the Hamilton Highway

The Cressy township is affected by the following Planning Overlays:

- Heritage Overlay (HO5) – The Frenchman's Inn Hotel
- Land Subject to Inundation Overlay (LSIO) – south of the Cemetery (outside study area).

Recommended Planning Controls

There is minimal development pressure on the Cressy township which requires additional planning controls to preserve manage or control development and change.



The following points provide recommendations in relation to possible improvements to the Colac Otway Planning Scheme that are intended to preserve the existing character and historical importance of the Duverney Street precinct.

- Investigate the provision of a Heritage Overlay and / or review of the heritage controls for the Duverney Street precinct including between Synnot Street, Lyons Street, the Woody Yaloak River and the former saleyards. The intention of this proposed overlay being to recognise the collective built and streetscape fabric of this precinct and ensure any future development is sensitive to historic character of the precinct.
- Engage an appropriately qualified heritage consultant to review the Heritage Overlay for the Cressy township with the view to considering the value of including the bluestone, former Uniting Church within the Heritage Overlay.

Recommended Heritage Overlay Extent for Cressy



LEGEND

	Township Zone		Public Park & Recreation Zone
	Rural Zone		Public Use Zone
	Unknown Zone		

Tourism Potential

Cressy, like Beeac, has limited potential as a tourist destination due to a lack of suitable features of interest to the broader population and the fact it is not on a major tourist route / road network.

As a part of the general tourism district within western Victoria, Cressy and the closer surrounding district has the ability to provide a range of points of interest that may be visited by tourists during their stay in the district, including the extensive fresh and salt water lake system to the south, pastoral heritage and historical towns.

Towns such as Cressy located near the extensive lake system to the south may benefit from a lake and river-based tourism program. Cressy could consider developing and servicing this market by providing accommodation, transport, boating, local knowledge etc. Cressy is ideally located near the Hamilton Highway to take advantage of this potential market opportunity.

An important aim of the Urban Design Framework plan is to develop Cressy as a pleasant, enjoyable and safe place for a short stop. As a strategy to attract people into the town on either a short or long term basis the appropriate streetscape development including historical signage interpretation and provision of basic services for travellers through the town is important to compliment other low-key draw cards to the town and district.

The urban design framework provides travellers with the opportunity to stop and use the facilities near the general store, or to spend longer within the town and learn of its history. Unfortunately most travellers through Cressy only travel along either the Hamilton Highway or the Colac – Ballarat Road - they do not venture onto the side roads including Duverney Street or Yarima Road. These streets provide significantly more historical and visual interest than the major thoroughfares. The Urban Design Framework aims to highlight and promote these areas as a means of getting visitors to spend more time in Cressy as well as improving the locals understanding of the heritage of the town,

Future Development – An Assumption

As identified in the Cressy Community Action Group Township Plan prepared by Change Concepts Pty. Ltd. (October 2000), the preservation and maintenance of the Cressy Primary School is vital for the township. Both community consultation meetings for this Urban Design Framework were held at the Primary School. It is clear the school is a very important part of the Cressy community and is possibly the single most important factor remaining in the town to attract new families to the town and district.

The Cressy Community Action Group are very motivated to improve the physical surroundings of the town by tree planting and landscape improvements, a sculpture that recognizes the youth of the district, footpaths, historical interpretation signage and improved township entries. These improvements will, over time, enhance the township and improve its 'liveability' for local residents.

The relatively 'isolated' geographic location of Cressy combined with limited employment opportunities results in minimal opportunities for future development and growth within the township. New building / development in the town will be limited but there is the opportunity to utilise existing buildings for new uses, affordable housing etc. (the use of the recreation reserve for dog trials is a good example of this). Proposed Urban Design Framework recommendations for Cressy are intended to enhance the aesthetics, community infrastructure and liveability of the town for its residents. These improvements will also importantly make the town more attractive for visitors.

Summary of Cressy Urban Design Framework Recommendations

The following points provide a summary of the key Urban Design Framework recommendations for Cressy. Refer to the attached reduced plans (Drawing No.s 0169-4 / 5 / 6) for full framework and streetscape details.

The following recommendations have been based on community feedback, detailed site analysis and the professional response to the site by the consultant team. The consultation process has provided for a review opportunity by the Cressy community, with the final township development proposals for the township being endorsed by the Cressy Community Activities Group (CCAG) at their September meeting.

Hamilton Highway - Western Entry (Historic 'Sir John Monash' Designed Bridge)

- *Liaise with VICROADS to ensure safe vehicle entry / exit to Hamilton Highway.*
- *Liaise with VICROADS to install an identification sign on the Hamilton Highway to highlight the historic, Sir John Monash' designed bridge including the age, history, construction method, involvement of masons etc. Include the 'story' that the bridge was originally designed and built for another location but was found to be 6 inches too short.*
- *Make provision for on-site safe (3-4 vehicle) carpark and vehicular turnaround and for unobstructed CFA access to the Woody Yaloak River.*

Hamilton Highway

- *Planting of selected feature trees along the northern side of the Hamilton Highway to assist in highlighting the town of Cressy from the highway.*
- *Scattered planting of selected native trees on the southern side of the Hamilton Highway to maintain views across the paddocks into the Cressy township.*

New Station Road (Northern Entry)

- *Enhance the northern entry approach to Cressy by extending the native street tree planting from the bend in New Station Road to the Hamilton Highway. Tree spacing and species to generally match existing – with consideration to overhead powerlines.*
- *Proposed avenue planting to commemorate a significant community person or event with appropriate signage erected at either end of the avenue.*

New Station Road

- *Engage an arborist to assess the physical health and structural condition of the Avenue trees. Remove trees deemed by the arborist as being dangerous, or as having a short life span. Undertake recommended remedial works on remaining trees.*
- *Re-establish selected native trees to complete the avenue by infill planting.*
- *Install a sign at either end of the Avenue recognising the history, age and purpose of the original Avenue.*
- *Maintain an approximate tree spacing along the avenue of approximately 15 metres - to match the existing spacing.*
- *Install a 1.50 metre gravel path on the southern side of New Station Street.*
- *Improved street lighting along New Station Street and Lyons Street (in particular at New Station Street curve).*

Indigenous Grassland Reserve

- *Liaise with Department of Natural Resources & Environment to promote, manage, enhance and preserve this regionally significant indigenous grassland.*
- *Promote the reserve to LandCare, environment and educational organisations as a means of bringing additional visitors to the town.*
- *Provide an interpretative signboard within a simple shelter with wind and rain protection opportunities. Interpretative signboard to include details of indigenous grassland species, extent, floral details, (pictorial), floral significance etc.*
- *Make provision for a safe, on-site car and bus park and vehicle turnaround.*
- *In association with DNRE prepare a management plan for the Reserve to preserve and enhance the floristic qualities and biodiversity of the reserve.*

Cressy Public Hall

- *The Cressy Public Hall plays a significant part in the life of the community. Proposed upgrading of the space surrounding the Hall includes:*
 - *Retention of existing clear open space for multi-purpose uses (ie. parking, functions, etc.)*
 - *Provision of parking along the back fence.*
 - *Increased provision for parking by the development of one of the degraded tennis courts into overflow parking for both Church and Hall functions.*
 - *Clear weedy undergrowth behind courts.*
 - *The remaining court to be retained and upgraded for recreational uses such as tennis and basketball.*
 - *Planting of native trees for shade.*
 - *Installation of lighting and pathways for improved safety.*
 - *A proposed BBQ pavillion with seating and tables that would open into the proposed community space (subject to consultation with the Uniting Church).*
 - *The area adjacent to the tennis court could be the site of the relocated playground equipment, this is also subject to consultation with the community and the Uniting Church.*

Uniting Church

- *The historic bluestone Uniting Church is one of the most significant features in the town. Opportunity to highlight the Church could be achieved through:*
 - *Interpretive signage outlining the history and importance of the building in the town's heritage.*
 - *A low post and rail fence for safety around the road area.*
 - *The current Uniting Church building houses a pipe organ which draws attention from interest groups around the area. The Church could consider signage that advertises open days for these groups.*

Traffic Control Measures

- *-Retain the existing alignment of Yarima Road intersection. Formalise the intersection by:*
 - *- Providing kerb and guttering. Planting the traffic island with hardy, low maintenance and low growing shrubs.*
 - *- Providing kerb and guttering in front of historic church into Lyons Street. Grass behind the kerb as an extension of the community park.*
 - *- Provide a footpath around the proposed 2001 Cressy Youth Monument.*

Travellers Rest Stop

- *Due to small size of the Cressy picnic area the proposal is to develop this space for travellers, rather than as a community space. Development of the area could include:*

- - Removal and relocation of existing shelter and play equipment from the site.
- - Relocate play equipment to proposed community space (next to proposed BBQ pavilion), subject to consultation with the Uniting Church.
- - Remove lattice to open up park to the main street.
- - Retain picnic tables and seating for travellers.
- - Provide signage providing information and directions to the Duverney Street / Woody Yalcoak River precinct.

Yarima Road

- Engage an arborist to assess the physical health and structural condition of the avenue trees along Yarima Road. Undertake recommended remedial works on avenue trees.
- Additional exotic species planting (i.e. Elms) on the western side of Yarima Road to improve and strengthen the exotic avenue planting link between the Public Hall and the School.
- Establish Indigenous planting on the northern end of Yarima Road planted in a random, mass planting arrangement to enhance the existing native roadside planting and relate to the visual character of the indigenous grassland adjoining on the western side.

Tenant Street (East)

- Clear weedy undergrowth along road edge along Tenant Street.
- Engage an arborist to assess the physical health and structural condition of the Avenue trees along Tenant Street (East). Remove trees deemed by the arborist as being dangerous, or as having a short life span. Undertake recommended remedial works on remaining trees.
- Re-establish selected native trees to complete the Avenue by in-fill planting.
- Maintain an approximate tree spacing along avenue of approximately 15 metres to match the existing spacing.
- Install a 1.50 metre gravel path on the northern side of Tenant Street.

2001 Cressy Youth Planting and Sculpture

- Establish selected tree and shrub planting along Lyons Street between Aerodrome Road / Duverney Street and the Lyons Road - Yarima Road intersection to strengthen the 'link' between the northern and southern township areas of Cressy and to recognise and publicly record the youth of Cressy, including all the children at the Cressy Primary School. The planting may also commemorate the Centenary of Federation.
- Involve local School children in the planting and maintenance of the Avenue.
- Design and construct a structure to identify each child at the Cressy Primary School and others who live in the town - including their age, name, interests etc. as a public record of the youth of Cressy as at 2001.
- Upgrade the path on the western side of Lyons Street to improve pedestrian access opportunities. The path is to be 1.50 metres wide and constructed of selected compacted gravel.
- Improve the street lighting along Lyons Street.

Cressy Recreation Reserve

- *Undertake restoration of the Cressy Recreation Reserve Memorial Gates including pressure washing bricks, replacement & restoration of lettering, straightening and repainting of steel gates.*
- *In response to the growing opportunity for the Reserve to be used for sheep dog trials and hence the need for stock to be kept within the reserve, clean out the cattle grid to ensure it is effective.*
- *Liaise with the organisers of the sheep dog trials to ensure the facilities are adequate for their needs. In association with the Colac Otway Shire investigate opportunities of funding for additional requirements.*
- *Establish additional selected trees throughout the Reserve for shade and aesthetic reasons.*

Former WW2 RAAF Air Combat Training Base

- *Provide a sign at the site of the former RAAF training base with key signage information to include technical information relating to the base and property access opportunities / regulations.*
- *Provide a sign at the intersection across from Duverney Street including re-alignment of Aerodrome Road.*

Woody Yaloak River Historic Precinct

- *Provide interpretive signage at strategic points which relate to significant historical sites in the precinct.*
- *Identify the original road and ford / crossing point by exposing stones in ford (if possible / practical).*
- *Remove weeds in / along the Woody Yaloak River including selected removal of rushes to expose original ford / crossing point.*
- *Establishment of indigenous planting along the banks of the Woody Yaloak River in association with the Catchment Management Authority / local LandCare group.*

Duverney Street Precinct

- *Encourage the development of, and uses for, existing assets within Duverney Street including the historic buildings, the saleyards (in conjunction with sheep dog trials), the Woody Yaloak river frontage.*
- *Now development in the area could include short term accommodation (i.e. bed and breakfasts) and more commercial opportunities relating to historical and tourist activities (subject to specific research and business planning).*
- *Improved street lighting along Lyons Street, particularly at the Tenant Street intersection and Duverney Street - Aerodrome Road intersection.*
- *Consider an appropriate planning overlay control (i.e. a Design Development Overlay) that aims to preserve the existing character of the precinct and ensures any future development within the precinct is contextually appropriate to this historic area.*

Cressy Community Survey Responses

Number of response sheets returned: 34

The community response sheets were designed to provide THA Landscape Architects, the Colac Otway Shire and the Cressy community with a summary of the opinions expressed by individuals in relation to the proposals developed for the Cressy Urban Design Framework. It is important to note that the following comments are reflective of individuals and do not necessarily reflect the views of the entire community. All comments provided by the community on the response sheets are listed to provide an accurate record of community views in relation to the urban design proposals.

Modifications to the plans have been made following community feedback at the public review meeting (August 28, 2001) and from feedback from the community response sheets. Modifications to the plans are based on community consensus, rather than individual responses.

The following provides a summary of the notes provided by the Cressy community from the Urban Design Framework Response Sheets. Repetition of some notes occurs – this has intentionally been retained to provide an accurate indication of community responses.

Positive Aspects of the Cressy Urban Design Framework

- A lot of traffic from the Hamilton Highway that could be capitalised on.
- Central location from Ballarat and Colac, ideal for day-trippers that could be encouraged.
- Historic aspects.
- Great plan, with lots of positives. I particularly loved the signage ideas for the historical areas of town. This will tie in really well with the Avenue of Honour and monument. Lots to look forward to in the future and work towards. I'm really eager to get the Avenue going for our big day next year.
- The extra trees, the history walks and signage.
- Historical precinct, walking path at least from ford to bridge, indigenous grassland plus old bridge, signage to entice tourists.
- Youth monument to connect youth to town.
- Restoration of the war memorial.
- The restoration of the Avenue of Honour between Lyons Street & the Recreation Reserve be attended to immediately.
- Despite local farmers objections, I believe the proposed walkway along the river would be a good idea. It could be built in the way of a catwalk above the ground, so as not to interfere with livestock.
- All aspects are positive!
- All sounds great and very positive
- A great plan I want to start straight away. Loved the idea of a walk along the river – thought it would be public land which landholders should have fenced.
- Maintenance is a separate issue and should not be allowed to detract from our vision for the future.
- All the issues very good except the river walk. Thanks to the CCAG.
- Very supportive in general of the streetscape / public land proposals for Cressy. It is an exciting project which should be a positive thing for the community.
- Improved streetscape of township. Promotes history of town. Promotes tourism interest. Promotes community pride.
- Promotes historical significance of town. Raises level of tourism interest. Raises aesthetics of town. Engenders sense of community pride. Provides focus for community to work together.

Negative Aspects of the Cressy Urban Design Framework

Some of the comments were listed on the response sheets as negative but we found them to be constructive criticism provided in the best interests of the project and therefore these comments have been considered in revisions to the framework plans / streetscape plans.

- Not enough recognition of the influence of the railway for the formation of Cressy. Signage or photos should be erected.
- Not enough scheduled servicing of Cressy from Shire eg. playground mowing, footy reserve mowing, public toilet maintenance / servicing.
- Retain the picnic area in the centre of the town. The wooden structure can be removed.
- None. Obviously there was some concern about the walking track at the meeting. I would have loved it, but understand the practicalities of stock using the river. We still have lots to be excited about.
- I would prefer to see the play equipment stay in the reserve as is, but happy for new equipment to go near the church in years to come.
- I like the picnic reserve the way it is, including the trellis which was put there as wind shelter.
- Far too much focus has been placed on Aerodrome Road, more should be placed on the railway end of town, eg. Maryborough.
- Why shift the playground when it is already aligned with the toilets?
- No developments should be undertaken on private land, such as the proposed river walk and a community park between the Hall and the Uniting Church. Who would be responsible for an insurance claim?
- Except for the walking track I find no other negative aspects of the framework.
- The negative attitudes of some residents do not reflect the overall enthusiasm that is developing in our community.

Any Other Suggestions?

The following provides a summary of the 'other suggestions' noted by the community on the response sheets.

- Fence off children's playground, add some equipment for younger children. Improve and paint existing toilet facilities.
- More senior citizens activities for locals to encourage them to stay.
- Ensure maintenance is carried out where tree planting occurs including cutting grass and keeping the landscape tidy - which is not now done properly.
- Fixing up the intersection should be a priority & for the Shire to do more maintenance (mowing & spraying).
- Improvements to Cemetery – road sign pointing to direction of same. Improvements to include:
 - An adequate rubbish bin – sign indicating NO GLASS ALLOWED!
 - Paint fence and shed at entrance gate.
 - Comfortable seat for visitors who may wish to sit quietly while visiting.
- Loved the plans and your positive attitudes, and particularly the way you all handled the negative responses from the meeting. Most of us are feeling excited and eager for things to proceed, so thank you for all your hard work and great ideas.
- Formalise the roundabout and plant with low shrubs.
- Better maintenance of the town in general including mowing, drains, etc.
- We need something to entice tourists to stop and see things in Cressy, on their way through the district.
- Urge Council to expedite implementation of items 1, 2 and 3 (development and restoration of the Avenue of Honour / development of a historic precinct / community park between Church & Hall)
- Enhance existing playground with more equipment and a safety fence around. This area needs extending.
- More social events for senior citizens.
- That a water outlet be put at the Cemetery.
- I add this additional comment, but realise it would cost too much, but the concept of underground power cables, would allow the planting of large trees – elms, oaks etc., that would really make a difference to the streetscape.
- The Cressy Public Hall is an issue in the town – and many issues need to be addressed so the hall is more 'user friendly' to reflect the issues of the community.

Cressy Community Development Priorities

The following table provides a summary of the Cressy township development priorities (ranked in order from highest to lowest priority) based on feedback from the community response sheets completed by the Cressy community during the public consultation and review stage of the Urban Design Framework.

The ranking of projects was developed based on the priority scores provided by individual community members. The highest priority (ranking 1) was scored with 11 points (the number of key projects identified by the consultants on the survey form) and the lowest priority (ranking 11) was scored with 1 point. Projects ranking 2 to 10 was scored using the same scoring system. Total scores for each project were tallied and ranked in order from highest to lowest score – therefore reflecting the order shown below.

The prioritised project list will assist the Colac Otway Shire in understanding the Cressy community's expectations for the implementation of the streetscape works and also assist in budgeting for capital works and for applying for capital works funding to assist in the implementation of the streetscape plan.

Ranking	Key Framework Elements as defined by the Cressy community
1 (highest)	Development and restoration of the Avenue of Honour with tree planting and commemoration with a monument proposed to be located at the corner of Tenant Street and Lyons Street.
2	Formalised and improved landscape treatment of the main intersection in the town, including grass, paths, a sculpture / memorial, improved signage etc.
3	Development of a historic precinct and associated signage to commemorate the history of Cressy including a heritage walk around Duverney Street, the Frenchman's Inn, the former saleyards, the Woody Yaloak River and original ford.
4	The development of streetscape planting along Lyons Street. This planting is proposed as a children's project, with a monument to identify the youth of Cressy including names, interests, ages etc. The 'Youth Monument' is proposed to be located on the corner of Lyons Street and Yarima Road, in front of the Hall.
5	Development of low-key footpaths throughout the town to link key points including Duverney Street, the General Store, the School and New Station Street.
6	Development of strong town entry treatments including landscape treatment (planting & grassing), signage to develop a clear sense of entry into the town.
7	Development of additional streetscape planting throughout the town, including some native and some exotic trees.
8	Development of a signage & highway treatment strategy to remind people as they travel along the Hamilton Highway what Cressy has to offer to travellers / visitors.
9	Development of a community park between the Uniting Church and the Hall.
10	Development of the indigenous grassland reserve on the corner of Yarima Road & Hamilton Highway. Proposed improvements include off-road parking and a shelter for interpretation signage etc.
11 (lowest)	Develop a walking track along the Woody Yaloak River linking the town with the Cemetery (to the south) and the historic bridge on the Highway (to the north).

Cressy Streetscape Materials & Species Palette

The following provides a summary, including indicative costs of the streetscape paving, furniture, signage and species recommended to be considered as part of the future development of the Cressy township. Further design development, documentation and community consultation is required to finalise this palette and associated costings.

Materials & Species Palette	Unit cost (* denotes materials cost only).
<p>Proposed Tree & Shrub Species</p> <p><i>Establish a combination of the following tree species to match existing spacing in New Station Street (northern entry). Final species selection to be approved by community:</i></p> <ul style="list-style-type: none"> • <i>Eucalyptus botryoides</i> (Southern Mahogany Gum) • <i>Eucalyptus cladocalyx</i> (Sugar Gum) • <i>Eucalyptus leucoxylon</i> (Yellow Gum) • <i>Eucalyptus saligna</i> (Sydney Blue Gum) • <i>Eucalyptus sideroxylon</i> (Red Iron Bark) 	<p>\$3.00* (tube stock & guard)</p>
<p><i>New Station Street streetscape development to include:</i></p> <p><i>Arborist's report / remedial works / tree removal</i></p> <p><i>Replacement planting with a combination of the following tree species to match existing spacing in New Station Street. Final species selection / location to be approved by community:</i></p> <ul style="list-style-type: none"> • <i>Eucalyptus botryoides</i> (Southern Mahogany Gum) • <i>Eucalyptus cladocalyx</i> (Sugar Gum) • <i>Eucalyptus leucoxylon</i> (Yellow Gum) • <i>Eucalyptus saligna</i> (Sydney Blue Gum) • <i>Eucalyptus sideroxylon</i> (Red Iron-bark) <p><i>Installation of standard style street lighting as required following consultation and analysis</i></p>	<p>To be confirmed</p> <p style="text-align: center;">\$3.00* (tube stock & guard)</p> <p>Consult with Powercor</p>
<p><i>Yarima Road streetscape development to include:</i></p> <p><i>Arborist's report / remedial works / tree removal</i></p> <p><i>Infill planting of selected exotic trees to match existing spacing and layout. Selected species to be planted at the southern end of Yarima Road includes:</i></p> <ul style="list-style-type: none"> • <i>Ulmus sp.</i> (Elm) <p><i>Establish selected indigenous species at the northern end of Yarima Road.</i></p>	<p>To be confirmed</p> <p style="text-align: center;">\$180.00* (75 litre pot)</p> <p style="text-align: center;">\$3.00* (tube stock & guard)</p>

<p><i>Cressy Public Hall grounds planting to include:</i></p> <p><i>Tree planting with selected native species such as:</i></p> <ul style="list-style-type: none"> • <i>Eucalyptus pauciflora (Snow Gum)</i> • <i>Eucalyptus sideroxylon (Red Iron Bark)</i> • <i>Grevillea robusta (Silky Oak)</i> • <i>Robinia pseudoacacia 'Frisia' Robinia cultivar)</i> 	<p>\$3.00* (tube stock & guard) to \$100.00* (45 litre pot)</p>
<p><i>Lyons Street streetscape development to include:</i></p> <p><i>Arborist's report /remedial works / tree removal</i></p> <p><i>Avenue planting with a combination of the following tree species to match existing spacing on the eastern side of Lyons Street. Final species selection to be approved by community:</i></p> <ul style="list-style-type: none"> • <i>Eucalyptus botryoides (Southern Mahogany Gum)</i> • <i>Eucalyptus cladocalyx (Sugar Gum)</i> • <i>Eucalyptus leucoxylon (Yellow Gum)</i> • <i>Eucalyptus saligna (Sydney Blue Gum)</i> • <i>Eucalyptus sideroxylon (Red Iron-bark)</i> <p><i>Shrub planting with selected indigenous shrub species (including Banksia, Bursaria, Leptospermum) on the western embankment of Street. Final species selection to be approved by community:</i></p> <p><i>Southern entry feature planting to include planting of selected native trees, such as the native species listed above and an understorey planting of selected bulbs</i></p> <p><i>Installation of standard style street lighting as required following consultation and analysis</i></p>	<p>To be confirmed</p> <p>\$3.00* (tube stock & guard)</p> <p>\$3.00* (tube stock & guard)</p> <p>\$3.00* (tube stock & guard)</p> <p>Consult with Powercor</p>
<p><i>Tenant Street (East) Memorial Planting streetscape development to include:</i></p> <p><i>Arborist's report /remedial works / tree removal</i></p> <p><i>Replacement planting with a combination of the following tree species to match existing spacing in Tenant Street. Final species selection to be approved by community:</i></p> <ul style="list-style-type: none"> • <i>Eucalyptus botryoides (Southern Mahogany Gum)</i> • <i>Eucalyptus cladocalyx (Sugar Gum)</i> • <i>Eucalyptus leucoxylon (Yellow Gum)</i> • <i>Eucalyptus saligna (Sydney Blue Gum)</i> • <i>Eucalyptus sideroxylon (Red Iron-bark)</i> <p><i>Installation of standard style street lighting as required following consultation and analysis</i></p>	<p>To be confirmed</p> <p>\$3.00* (tube stock & guard)</p> <p>Consult with Powercor</p>

<p><i>Hamilton Highway streetscape development to include:</i></p> <p><i>Planting on the northern side of Hamilton Highway with selected feature tree species at 20 metre centre spacing. Final species selection to be approved by community:</i></p> <ul style="list-style-type: none"> • <i>Fraxinus oxycarpa 'Raywood' (Claret Ash)</i> • <i>Liquidambar styraciflua (Sweet Gum)</i> <p><i>Planting on the southern side of Hamilton Highway with selected indigenous tree species arranged in informal groupings.</i></p>	<p>\$100.00* (45 litre pot)</p> <p>\$3.00* (tube stock & guard)</p>
<p><i>Cressy Recreation Reserve</i></p> <p><i>Establish informal groups of shade tree planting using Eucalyptus cladocalyx (Sugar Gum)</i></p>	<p>\$3.00* (tube stock & guard)</p>
<p><i>Duverney Street and Aerodrome Road median streetscape development to include:</i></p> <p><i>Arborist's report /remedial works / tree removal</i></p> <p><i>Replacement planting with a combination of the following tree species. Final species selection to be approved by community:</i></p> <ul style="list-style-type: none"> • <i>Eucalyptus botryoides (Southern Mahogany Gum)</i> • <i>Eucalyptus cladocalyx (Sugar Gum)</i> • <i>Eucalyptus leucoxylon (Yellow Gum)</i> • <i>Eucalyptus saligna (Sydney Blue Gum)</i> • <i>Eucalyptus sideroxylon (Red Iron-bark)</i> <p><i>Installation of standard style street lighting as required following consultation and analysis</i></p>	<p>To be confirmed</p> <p>\$3.00* (tube stock & guard)</p> <p>Consult with Powercor</p>
<p><i>Establish indigenous species in informal groupings along the Woody Yaloak River corridor. Species to be confirmed by local Landcare group.</i></p>	<p>\$3.00* (tube stock & guard)</p>
<p>Paving</p> <p><i>Construct 1.50 metre wide gravel footpath along both sides of New Station Street, Yarima Road, Lyons Street, Mowatts Street, Tenant Street (east), edge at the Lake Cressy Foreshore Reserve using the following material:</i></p> <ul style="list-style-type: none"> • <i>Crushed aggregate (allowing for full reconstruction)</i> 	<p>\$15.00 sq m</p>
<p><i>Construct feature paving at site of interpretive signage in median of Duverney Street and Aerodrome Road using one of the following materials:</i></p> <ul style="list-style-type: none"> • <i>Brick paving on a crushed rock base.</i> • <i>Concrete pavement (subject to treatment).</i> 	<p>\$65.00 sq m</p> <p>\$40.00 to \$80.00 sq m</p>
<p><i>Construct gravel driveway and pathway using the following material:</i></p> <ul style="list-style-type: none"> • <i>Crushed aggregate (allowing for full reconstruction)</i> 	<p>\$15.00 sq m</p>

<p>Lighting Erect new lighting within grounds of Cressy Public Hall along driveway.</p>	<p>Consult with Powercor / Colac Otway Shire</p>
<p>Streetscape Furniture / Fittings Install new picnic table and bench seating within the Duverney Street and Aerodrome Road medians:</p> <ul style="list-style-type: none"> • Bench Seat • Picnic Table and Seats 	<p>\$500.00* ea \$1,500.00* ea</p>
<p>Signage Historical interpretation / community noticeboards /township entry signage / street signage.</p>	<p>\$250.00 - \$2,500.00 (allowance)</p>
<p>Other structures Install new BBQ Picnic shelter within Cressy Public Hall and Uniting Church grounds.</p> <p>Install new single hotplate electric BBQ within Cressy Public Hall and Uniting Church grounds.</p> <p>New hardwood timber post and rail fence along the front of the Cressy Public Hall and Uniting Church grounds. Include southern entry fence and fence in Duverney Street and Aerodrome Road medians.</p> <p>Construction and installation of proposed Cressy Youth Memorial structure. Subject to final design and school involvement. Allow for the engagement of a community artist.</p> <p>Materials for the proposed War Memorial on Tenant and Lyons Streets.</p> <p>Post and rail fence around the War Memorial.</p> <p>Repair and replacement work to be done on the Cressy Recreation Reserve Memorial Gates.</p>	<p>\$5,000.00 to \$10,000.00</p> <p>\$3,000.00 ea</p> <p>\$30.00 lin.m.</p> <p>\$10,000.00</p> <p>\$1,000.00*</p> <p>\$30.00* lin. m.</p> <p>To be confirmed.</p>
<p>Infrastructure Formalisation of existing traffic control measures at Yarima Road intersection and new traffic island for Cressy Youth Memorial. Upgrade to include sawcutting existing bitumen, excavation, construction of new kerb and channelling, new bitumen, topsoil for traffic island garden bed.</p> <p>Construction of new road alignment for Aerodrome Road.</p> <p>Construction of car parking bays and vehicle turnaround on northern side of Hamilton Highway at the historic bridge including CFA access</p> <p>Construction of bus and car parking bays and vehicle turnaround within the indigenous grassland reserve / including information signage</p>	<p>To be confirmed.</p> <p>\$10,000.00 to \$15,000.00</p> <p>To be confirmed.</p> <p>To be confirmed.</p>

Cressy Urban Design Framework Plans

Existing Town Plan
Streetscape Master Plan
Town Centre Detail Plan
Duverney Street Detail Plan

HAMILTON HIGHWAY - WESTERN ENTRY (HISTORIC BRIDGE)

- Lapse with VICROADS to ensure safe vehicle entry / exit to Hamilton Highway.
- Lapse with VICROADS to install an identification sign on the Hamilton Highway to highlight the historic Sir John Monash designed bridge.
- Install an interpretative sign on the bridge detailing the age, history, designer, construction method, involvement of mosons etc. Include the 'story' that the bridge was originally designed and built for another location but was found to be 6 inches too short.
- Make provision for on-site safe (3-4 vehicle) carpark and vehicular turnaround and for unobstructed CFA access to Woody Yalok River.

CRESSY INTERPRETATION SIGNAGE SCHEDULE

Sign location / purpose	Proposed signage content
1. DUVENERY STREET	History of street / origin of name / original of Cressy township name / original businesses in street / reason for street location / history of planting in median strip.
2. WOODY YALOK RIVER CROSSING	Settlement history of Cressy township / important dates / original settlers / crossing en route between Geelong & Elphinstone Bridge / descriptive location of original ford & access roads
3. FRENCHMANS INN / SALEYARDS / 'COMMON'	History of hotel including age / important dates etc. / background of Mr & Mrs. Duverney / reason for hotels location / history of saleyards / relevant stories of local area / previous uses of common area.
4. FORMER RAAF TRAINING BASE	History of former RAAF training base / important dates / aircraft used / notable events / historical significance / aerial photo of base at full operation. Associated with the base / aerial photo of base at full operation.
5. FORMER CHURCH	Year of construction / original denomination / size of original parish / numbers of parishioners / history in relation to the source of stone for building / current use.
6. 2001 CRESSY YOUTH SCULPTURE	A sign / structure to recognise Cressy's youth in 2001. A key project to undertake in association with the Cressy Primary School. The sign could be in the form of a mosaic / ceramic tile or other which includes details of students in the town including age, interests etc. and be related to the proposed Federation Planting between Duverney Street and the Cressy Hall.
7. HISTORICAL BRIDGE	Year of construction / construction method / brief history of bridge including Federation / brief history of Federation engineer St John Monash / story associated with construction history.
8. AVENUE OF HONOUR MEMORIAL	Memorial will commemorate those who served their country from the district of Cressy.
9. FORMER CRESSY RAILWAY STATION	History of station / opening and closing dates / influence of town / freight types / the passenger routes.

HAMILTON HIGHWAY

- Planting of selected feature trees along the northern side of the Hamilton Highway will assist in highlighting Cressy from the highway.
- Scattered planting of selected native trees on the southern side of the highway to maintain views across the paddocks into the Cressy township.

INDIGENOUS GRASSLAND RESERVE

- Lapse with Department of Natural Resources & Environment to promote, manage, enhance and preserve this regionally significant indigenous grassland.
- Promote access to LandCare, environment and educational organisations as a means of bringing additional visitors to the town.
- Provide an interpretative signboard within a simple shelter with wind and rain protection opportunities. Interpretative signboard to include details of indigenous grassland species, extent, floral details, (botanical), floral significance etc.
- Make provision for a safe, on-site car and bus park and vehicle turnaround.
- In association with DNRE prepare a management plan for the Reserve.

NEW STATION ROAD (NORTHERN ENTRY)

- To enhance the entry approach to Cressy from the north extend the native street tree planting from the bend in New Station Road to the Hamilton Highway. Tree spacing and species to generally match existing.
- Planting to commemorate a significant community person or event with appropriate signage erected at either end of the planting.

NEW STATION STREET

- Engage an arborist to assess the physical health and structural condition of the Avenue trees deemed by the arborist as being dangerous, or as having a short life span. Undertake recommended remedial works on remaining trees.
- Re-establish selected native trees to complete the avenue by infill planting.
- Install a sign at either end of the Avenue recognising the history, age and purpose of the original Avenue.
- Maintain an approximate tree spacing along avenue of approximately 15 metres to match existing spacing.
- Install a 1.50 metre gravel path on both sides of New Station Street.
- Improved street lighting along New Station Street and Lyons Street (in particular at New Station Street curve).

YARIMA ROAD

- Engage an arborist to assess the physical health and structural condition of the avenue trees along New Station Road.
- Undertake recommended remedial works on Avenue trees.
- Additional exotic species planting (i.e. Eucalyptus) on the western side of Yarima Road to improve and strengthen the exotic Avenue planting link between the Public Hall and the School.
- Establish indigenous planting on the northern end of Yarima Road planned in a random, mass planted arrangement to provide a mass planting roadside character of the indigenous grassland adjoining on the western side.

2001 CRESSY YOUTH PLANTING AND SCULPTURE

- Establish selected tree and shrub planting along Lyons Street between Aerodrome Road / Duverney Street and the Lyons Road - Yorring Road intersection.
- The purpose of the planting is to strengthen the 'link' between the northern end of the township stream of Cressy and to recognise and publicly record the youth of Cressy, including all the children of the Cressy Primary School.
- The planting may also commemorate the Centenary of Federation.
- Involve local School children in the planting and maintenance of the Avenue.
- Design and construct a structure to identify each child of the Cressy Primary School and others who live in the town - including their age, name, interests etc. as a public record of the youth of Cressy as at 2001.
- Upgrade the path on the western side of Lyons Street to improve pedestrian access opportunities. The path is to be 1.50 metres wide and constructed of selected compacted gravel.
- Improved street lighting along Lyons Street.

FORMER WW2 RAAF AIR COMBAT TRAINING BASE

- Provide a sign at the site of the former RAAF training base (site not shown on this map).
- Key information on this sign to include:
 - technical information relating to the base for enthusiasts /
 - Property access opportunities / regulations.

CRESSY RECREATION RESERVE

- Undertake restoration of the Cressy Recreation Reserve Memorial Gates including pressure washing brickwork, repainting and restoration of retaining, straightening and repainting of steel gates.
- Due to growing opportunity for use of the Reserve for Sheep Dog Trials and therefore the need for stock within the reserve it is effective to construct a fenced area with the gates of the Speed Dog Trials to be used as one of the dog training facilities in association with the Cressy Oval and associated opportunities of funding for additional requirements.
- Establish additional selected trees throughout the Reserve for shade and aesthetic reasons.

WOODY YALOK RIVER HISTORIC PRECINCT

- Proposed improvements to include:
 - Interpretive signage (see signage schedule)
 - Identification of original road and ford / crossing point - including exposing stones in ford if possible.
 - removal of weeds. Selected removal of rushes etc.
 - Establishment of indigenous planting along the river banks.

WOODY YALOK RIVER

- In association with local Landcare groups & adjoining landowners re-establish indigenous vegetation along the banks of the Woody Yalok River.



DUVENERY STREET PRECINCT

- Encourage the development of, and uses for, existing assets including:
 - the historic buildings
 - the saleyards in conjunction with the sheep dog trials.
- the river frontage
- New development in the area could include short term accommodation (i.e. bed and breakfasts) and more commercial opportunities relating to historical and tourist activities (subject to specific research and business planning).
- Improved street lighting along Lyons Street, particularly at the Street St Aerodrome Road Intersection.

- LEGEND**
- Existing building
 - Property boundaries - undeveloped
 - Creek / Billabong / River flats
 - Existing vegetation
 - Proposed indigenous vegetation
 - Proposed exotic vegetation
 - Paverlines
 - Proposed gravel pathway
 - Proposed interpretive signage

Scale: 1:3,000 at A1
 Drawing No: 0169-04
 Urban Design Framework prepared for the Cressy Shire with support from the Department of Infrastructure.

NOTE:
 Township Master Plan and associated urban design development strategies prepared based on public feedback (public meetings held on July 16, 2001 and August 28, 2001) and community response sheets.

- Tenant Street (West)**
- Install interpretive signage as part of the proposed heritage walk, explaining the heritage of the Frenchman's Inn and the former salesyards.
 - Proposed planting of selected feature trees to frame hotel.

- Avenue of Honour Memorial**
- The intersection of Tenant Street (west) and Lyons Street is the proposed location of the Cressy Avenue of Honour Memorial. The memorial will include:
- A feature paved square with a monument erected to commemorate the original Avenue of Honour and those who served from the district of Cressy.
 - The proposed Memorial location provides opportunity for a formal community gathering space and a strong visual link to the existing Memorial gates and associated tree planting.

- Tenant Street (East)**
- Proposed improvements include:
- Removal of weeds undergrowth along road edge.
 - Engage an arborist to assess the physical health and structural condition of the Avenue trees.
 - Remove trees deemed by the arborist as being dangerous, or as having a short life span.
 - Undertake recommended remedial works on remaining trees.
 - Re-establish selected native trees to complete the Avenue by infill planting.
 - Maintain proposed tree spacing along avenue to match existing spacing.
 - Infill tree planting to be of a random nature (spacing & alignment).
 - Construct 1.50 metre gravel pathway to form link between Lyons Street and the Cressy Oval.



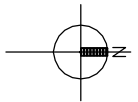
- Woody Yaloak River Precinct**
- Proposed improvements to include:
- Interpretive signage / photographs highlighting the settlement history of Cressy.
 - Identification of original road and ford / crossing point – including exposing stones in ford if possible.
 - removal of weeds including selected removal of rushes etc.
 - In association with local LandCare groups & adjoining landowners re-establish indigenous vegetation along the banks of the Woody Yaloak River.

- Duverney Street Precinct**
- The proposed split timber post and rail fence will draw attention to this significant precinct.
 - A proposed gravel pathway leading to a feature paved square will provide the opportunity for interpretive signage and photographs outlining this historic precinct. This square will form the beginning of a short signed heritage walk linking the Woody Yaloak River, the historic Frenchman's Inn and the salesyards.
 - Within the Duverney Street median, remove selected trees to improve existing tree health and to open up the space.
 - Improved street lighting along Lyons Street, in particular, the Tenant Street intersection and the intersection of Duverney St and Aerodrome Road.
 - Provide picnic tables and seating within the median.

- Southern Entry**
- Proposed split timber post and rail fence with signage will create a sense of entry for people travelling through the town of Cressy.
 - Avenue planting of selected native trees on both sides of Lyons Street with an understory planting of bulbs is proposed to reinforce the sense of entry.

- Aerodrome Road**
- The proposed extension of the Duverney Street median will help to create a stronger sense of entry to Cressy.
- The wide median also provides opportunity to highlight the location of the former RAAF combat training base through interpretive signage / photographs.
 - The median will be planted in a similar arrangement to Duverney Street (randomly spaced).
 - Install a post and rail fence to reinforce the sense of entry into Cressy.

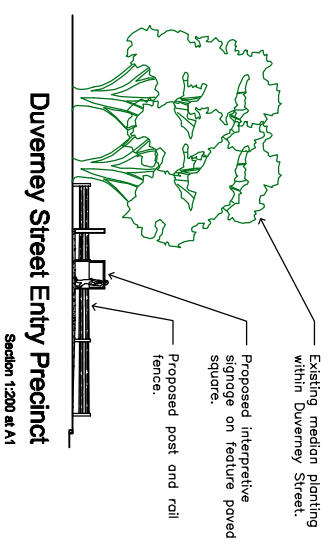
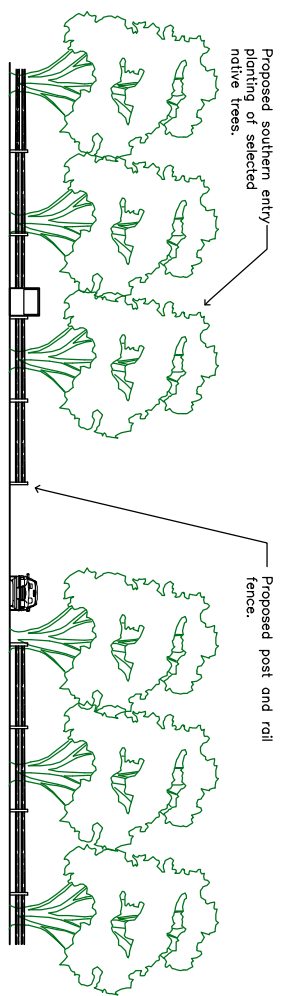
- LEGEND**
- Existing building
 - Property boundaries – developed
 - Property boundaries – undeveloped
 - Creek / Billabong / River flats
 - Existing vegetation
 - Proposed native vegetation
 - Proposed split timber post and rail fence
 - Powerlines
 - Proposed gravel pathway
 - Proposed interpretive signage
 - Proposed signed heritage walk



Scale: 1:1,000 of A1
Drawing No: 0169-06

Urban Design Framework prepared for the Colac Otway Shire with support from the Department of Infrastructure.

NOTE: Township Master Plan and associated Urban Design Framework are public documents prepared based on public feedback (public hearings held on July 16, 2001 and August 28, 2001) and community response sheets.



Yarima Road

Yarima Road has a unique character within the town of Cressy because of the exotic avenue planting along the street. Exotic species include Elm, Oak and Pinus trees. The existing planting changes after the Primary School with native trees planted up to the Hamilton Highway.

– Infill planting of selected exotic trees would strengthen the character of the existing avenue planting.

Cressy Public Hall

The Cressy Public Hall plays a significant part in the life of the community. Proposed upgrading of the space surrounding the Hall includes:

- Retention of existing clear open space for multi-purpose uses (ie. parking, functions, etc.)
- Provision of parking along the back fence.
- Increased provision for parking by the development of one of the degraded tennis courts into overflow parking for both Church and Hall functions.
- The area behind this court would be cleared of the weeds, undergrowth.
- The remaining court could be retained and upgraded for recreational uses such as tennis and basketball.
- Planting of native trees for shade.
- Installation of lighting and pathways for improved safety.
- A proposed BBQ pavilion with seating and tables which would open into the proposed community space (subject to consultation with the Uniting Church).
- The area adjacent to the tennis court could be the site of the relocated playground equipment, this is also subject to consultation with the community and the Uniting Church.

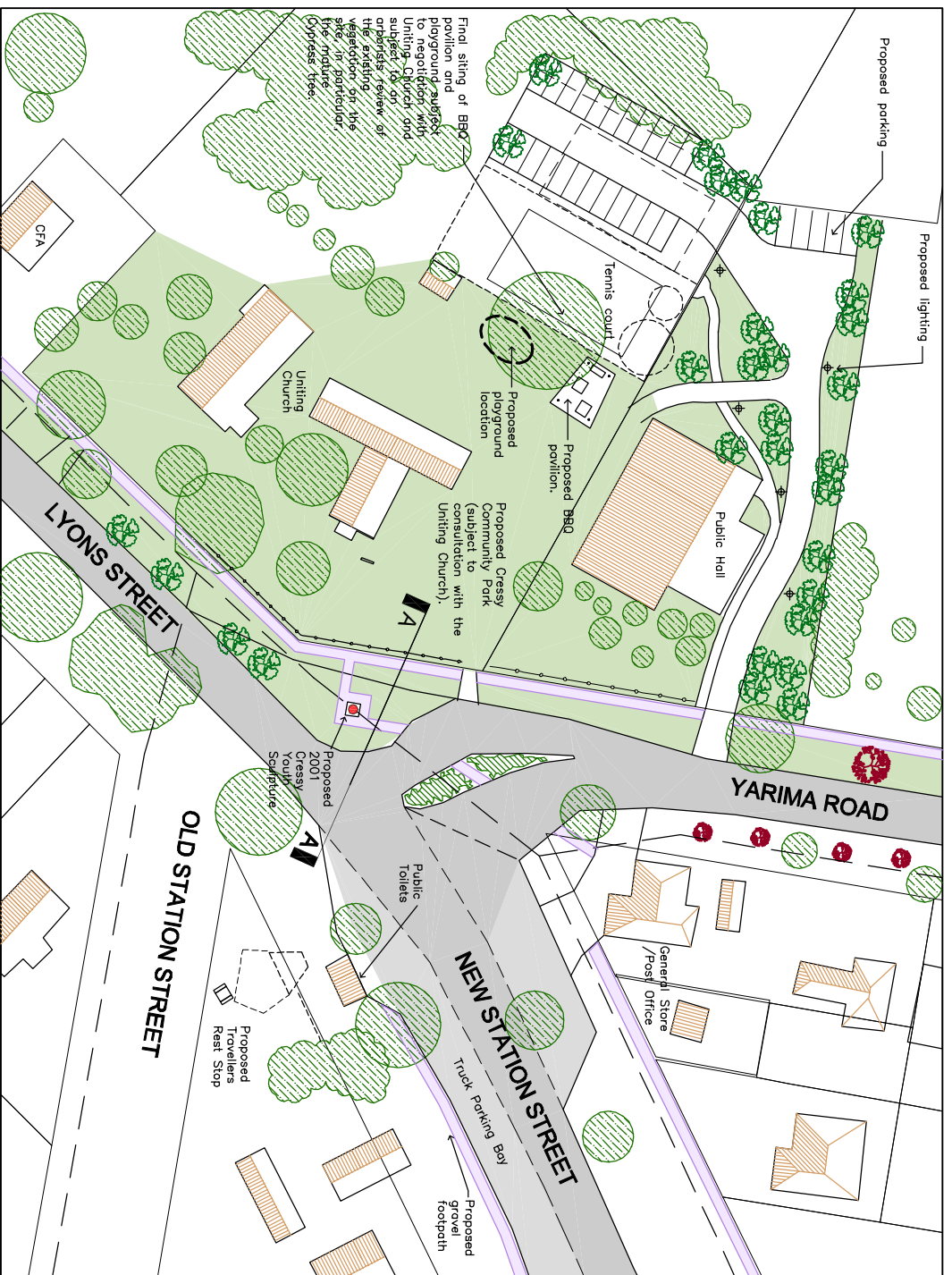
Uniting Church

The historic bluestone Uniting Church is one of the most significant features in the town. Opportunity to highlight the Church could be achieved through:

- Interpretive signage outlining the history and importance of the building in the town's heritage.
- A low post and rail fence for safety around the road area.
- The current Uniting Church building houses a pipe organ which draws attention from interest groups around the area. The Church could consider signage that advertises open days for these groups.

Footpath network

– Proposed gravel footpath (1.50 metres wide) will link the Yarima Road and Duverney Street and New Station Street.



Traffic Control Measures

– Retain the existing alignment of Yarima Road intersection. Formalise the intersection by:

- Providing kerb and guttering. Planting the traffic island with hardy, low maintenance and low growing shrubs.
- Providing kerb and guttering in front of historic church into Lyons Street.
- Grass behind the kerb as an extension of the community park.
- Provide a footpath around the proposed 2001 Cressy Youth Monument.

2001 Cressy Youth Sculpture

The proposed Cressy 2001 Centenary of Federation Youth Sculpture will commemorate the students of Cressy Primary School in 2001. The project will include:

- Proposed planting of native trees and shrubs from Duverney Street, along Lyons Road and finishing at the intersection. Sections are shown below.
- Each tree will be planted by a student of the Primary School.
- The Sculpture will display commemorative artworks created by each of the students (to be developed in association with a community artist).

Travellers Rest Stop

Due to small size of the Cressy Picnic area the proposal is to develop this space for travellers, rather than as a community space. Development of the area could include:

- Removal and relocation of existing shelter and play equipment from the site.
- Relocate play equipment to proposed community space (next to proposed BBQ pavilion), subject to consultation with the Uniting Church.
- Remove lattice to open up park to the main street.
- Retain picnic tables and seating for travellers.
- Provide signage providing information and directions to the Duverney Street / Woody Yalook River precinct.

LEGEND

- Existing building
- Property boundaries – developed
- Property boundaries – undeveloped
- Creek / Billabong / River flats
- Existing vegetation
- Proposed native vegetation
- Proposed exotic vegetation
- Existing post and rail fence
- Proposed post and rail fence
- Powerlines
- Proposed gravel pathway
- Proposed interpretive signage

General Maintenance Recommendations

As a community lease with the Colac Otway Shire to develop an agreed maintenance schedule for the Cressy Township, particular emphasis should be placed on:

- grass slashing / spraying;
- tree management; and
- public toilet maintenance.

Importantly the level of maintenance needs to be of a standard suitable to the community, but within the financial and physical resources of the Shire.



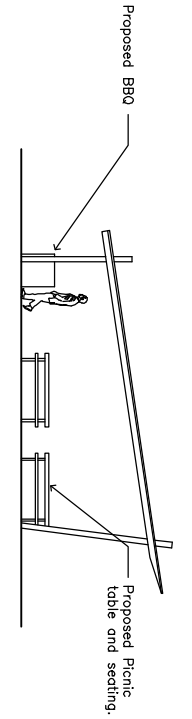
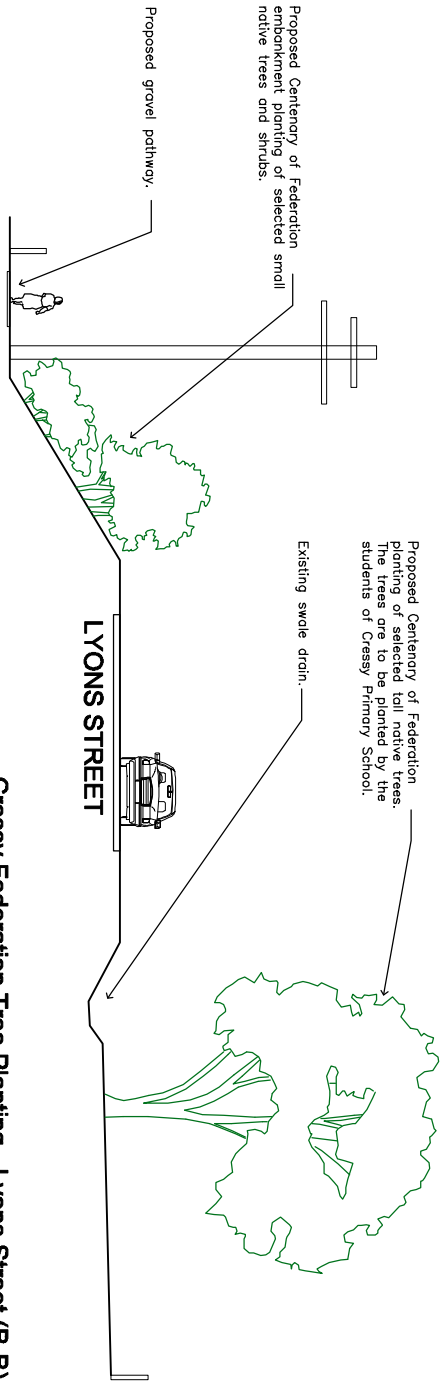
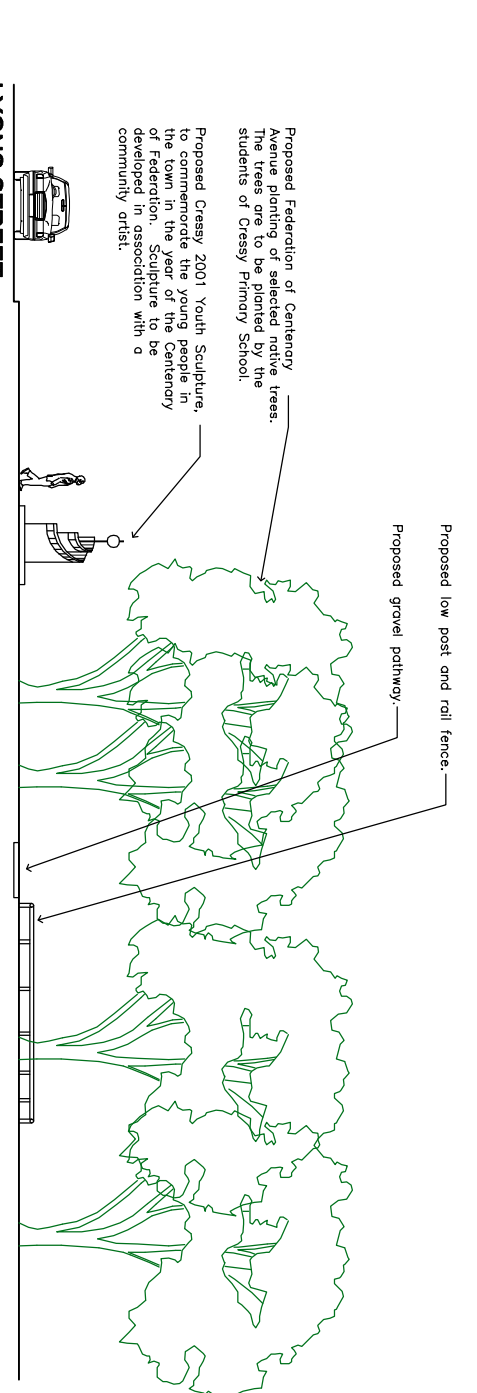
Scale: 1:500 at A1
Drawing No: 0169-05

Urban Design Framework prepared for the Colac Otway Shire with support from the Department of Infrastructure.

CRESSY TOWNSHIP

Town Centre Detail Plan

URBAN DESIGN FRAMEWORK - SEPTEMBER 2001



NOTE:
Township Master Plan and associated urban design development strategies prepared based on public feedback (public meetings held on July 16, 2001 and August 28, 2001) and community response sheets.



Cressy Urban Design Framework Plan and Priorities Review

Revised Master Plan 2007

Revised Master Plan Details 2007

2007 Reviewed Cressy Township Master Plan Priorities

HAMILTON HIGHWAY - WESTERN ENTRY (HISTORIC BRIDGE)

- Liaise with VICROADS to ensure safe vehicle entry / exit to Hamilton Highway from Yarima Road.
- Liaise with VICROADS to install an identification sign on the Hamilton Highway to highlight the historic, Sir John Monash designed bridge.
- Install an interpretative sign on the bridge detailing the age, history, designer, construction method, involvement of masons etc. Include the 'story' that the bridge was originally designed and built for another location but was found to be 6 inches too short.
- Make provision for on-site safe (3-4 vehicle) carpark and vehicular turnaround and for unobstructed CFA access to Woody Yaloak River.

HAMILTON HIGHWAY

- Planting of selected low water use native feature trees along the northern side of the Hamilton Highway will assist in highlighting Cressy from the highway.
- Scattered planting of selected native trees on the southern side of the highway to maintain views across the paddocks into the Cressy township.

NEW STATION ROAD (NORTHERN ENTRY)

- To enhance the entry approach to Cressy from the north extend the native street tree planting from the bend in New Station Road to the Hamilton Highway. Tree spacing and species to generally match existing.
- Planting to commemorate a significant community person or event with appropriate signage erected at either end of the planting.

YARIMA ROAD

- Engage an arborist to assess the physical health and structural condition of the avenue trees along New Station Road.
- Undertake recommended remedial works on Avenue trees.
- Additional exotic species planting (i.e. Elms) on the western side of Yarima Road to improve and strengthen the exotic Avenue planting link between the Public Hall and the School.
- Establish indigenous planting on the northern end of Yarima Road planted in a random, mass planted arrangement to enhance the existing native roadside planting and relate to the visual character of the indigenous grassland adjoining on the western side.
- Install a 1.50 metre gravel path on both sides of New Station Street.
- Yarima Street to be painted with appropriate linemarkings to improve safety.

STRATEGIC FIRE BREAK

Liaise with Victrack in relation to maintaining a strategic fire break along the Gheringhap - Maroona Railway and relevant landowners along the Woody - Yaloak River Reserve with ongoing appropriate management of woody weeds.

LYONS STREET

- Establish selected tree and shrub planting along Lyons Street between Aerodrome Road / Duverney Street and the Lyons Road - Yarima Road intersection.
- Upgrade the path on the western side of Lyons Street to improve pedestrian access opportunities. The path is to be 1.50 metres wide and constructed of selected compacted gravel.
- Liaise with VIC Roads, Council & Powercor to improve street lighting along Lyons Street for improved traffic / pedestrian safety.

NEW STATION STREET

- Engage an arborist to assess the physical health and structural condition of the Avenue trees.
- Remove trees deemed by the arborist as being dangerous, or as having a short life span. Undertake recommended remedial works on remaining trees.
- Re-establish selected native trees to complete the avenue by infill planting.
- Install a sign at either end of the Avenue recognising the history, age and purpose of the original Avenue.
- Maintain an approximate tree spacing along avenue of approximately 15 metres to match existing spacing.
- Install a 1.50 metre gravel path on both sides of New Station Street.
- Liaise with Powercor for improved street lighting along New Station Street and Lyons Street (in particular at New Station Street curve).

TRAFFIC SPEED

With support from the Colac Otway Shire, lobby VICROADS to reduce the traffic speed within the built-up area of Cressy to 50km/hr. Liaise with VICROADS to re-evaluate the location of the speed reduction signs to ensure they are correctly positioned to maximise pedestrian and vehicle safety within the township.

TENANT STREET (EAST)

- Clear weedy undergrowth along road edge along Tenant Street.
- Engage an arborist to assess the physical health and structural condition of the Avenue trees along Tenant Street (East).
- Remove trees deemed by the arborist as being dangerous, or as having a short life span. Undertake recommended remedial works on remaining trees.
- Re-establish selected native trees to complete the Avenue by infill planting.
- Maintain an approximate tree spacing along avenue of approximately 15 metres to match existing spacing.
- Install a 1.50 metre gravel path on the northern side of Tenant Street.

FORMER WW2 RAAF AIR COMBAT TRAINING BASE

Provide a sign at the site of the former RAAF training base (site not shown on this map). Key information on this sign to include:

- technical information relating to the base for enthusiasts.
- Property access opportunities / regulations.

CRESSY RECREATION RESERVE

- Undertake restoration of the Cressy Recreation Reserve Memorial Gates including pressure washing brickwork, replacement and restoration of lettering, straightening and repainting of steel gates.
- Due to growing opportunity for use of the Reserve for Sheep Dog Trials and therefore the need for stock within the reserve clean out the cattle grid to ensure it is effective.
- Liaise with the organisers of the Sheep Dog Trials to ensure the facilities are adequate for their needs. In association with the Colac Otway Shire investigate opportunities of funding for additional requirements.
- Establish additional selected trees throughout the Reserve for shade and aesthetic reasons.
- Refer to Colac Otway Shire Council - Tennis Strategy for tennis court developments.
- Develop appropriate signage outlining opportunities for camping at the Recreation Reserve and facilities available.

2007 Review and Amendments

Elements completed since 2001:

- Improved landscape treatment at main intersection of town including sculpted seat.
- Interpretive historical signage network installed.
- Avenue of Honour memorial installed.

Ongoing:

- Town entry signage recommendations are underway by community and Council.
- Street tree planting being discussed between community and Council.

2007 Additions:

- Relocated town notice board to vicinity of Co-op.
- Turning lane from Western Highway into Yarima Street.
- Upgrade Cressy Tennis Courts to incorporate multiuse netball courts.
- Placement of Strategic Fire Break Zones.

DUVERNEY STREET PRECINCT

Encourage the development of, and uses for, existing assets including:

- the historic buildings
- the saleyards in conjunction with the sheep dog trials.
- the river frontage

New development in the area could include short term accommodation (i.e. bed and breakfasts) and more commercial opportunities relating to historical and tourist activities (subject to specific research and business planning).

- Improved street lighting along Lyons Street, particularly at the Tenant St intersection and Duverney Street and Aerodrome Road intersection.

LEGEND

- Existing building
- Property boundaries - developed
- Property boundaries - undeveloped
- Creek / Billabong / River flats
- Existing vegetation
- Proposed indigenous vegetation
- Proposed exotic vegetation
- Proposed strategic fire break zone
- Powerlines
- Proposed gravel pathway

NOTE:

Township Master Plan and associated urban design development strategies prepared based on public feedback (public meetings held on July 16, 2001 and August 28, 2001) and community response sheets.

NOTE:

Township Master Plan and associated urban design development strategies based on public meeting held on 8 November, 2006 and review of feedback from community response sheets.

Colac Otway
Scale: 1:3000 at A1
Drawing No: 0169-04
Project No: 06145 - 01

2001 Urban Design Framework prepared for the Colac Otway Shire with support from the Department of Infrastructure. Reviewed Urban Design Framework prepared for the Colac Otway Shire.

CRESSY TOWNSHIP REVIEW

Revised Master Plan
MAY 2007



202 Grant Street
Ballarat VIC 3300
Phone: 5333 5942
Facsimile: 5333 5488
Email: thal@fha.com.au

Yarima Road

Yarima Road has a unique character within the town of Cressy because of the exotic avenue planting along the street. Exotic species include Elm, Oak and Prunus trees. The existing planting changes after the Primary School with native trees planted up to the Hamilton Highway.

- Infill planting of selected exotic trees would strengthen the character of the existing avenue planting.

Cressy Public Hall

The Cressy Public Hall plays a significant part in the life of the community. Proposed upgrading of the space surrounding the Hall includes:

- Retention of existing clear open space for multi-purpose uses (i.e. parking, functions, etc.)
- Provision of parking along the back fence.
- Increased provision for parking by the development of one of the degraded tennis courts into overflow parking for both Church and Hall functions.
- The area behind this court would be cleared of the weedy undergrowth.
- The remaining court could be retained and upgraded for recreational uses such as tennis and basketball.
- Planting of native trees for shade.
- Installation of lighting and pathways for improved safety.

Uniting Church

The historic bluestone Uniting Church is one of the most significant features in the town. Opportunity to highlight the Church could be achieved through:

- Interpretive signage outlining the history and importance of the building in the town's heritage.
- A low post and rail fence for safety around the road area.
- The current Uniting Church building houses a pipe organ which draws attention from interest groups around the area. The Church could consider signage that advertises open days for these groups.

Footpath network

- Proposed gravel footpath (1.50 metres wide) will link the Yarima Road and Duverney Street and New Station Street.

General Maintenance Recommendations

As a community liaison with the Colac Otway Shire to develop an agreed maintenance schedule for the Cressy township. In particular emphasis should be placed on:

- grass slashing / spraying;
- drainage;
- tree management; and
- public toilet maintenance.

DRAINAGE REVIEW

The drainage throughout the town requires immediate attention, in particular litter traps needing to be emptied. On a longer term, a complete reassessment of existing drainage lines for replacement needs to be undertaken.

Cressy Co-op

The Cressy Co-op has become the new community 'hub' of Cressy providing daily necessities including newspapers, bread etc. Relocate the town notice board from the old shop to within this vicinity.

Cressy Community Park & Travellers Rest Stop

Develop this space for both the community and for travellers. Redevelopment of the playground was recently completed. Development of the area could include:

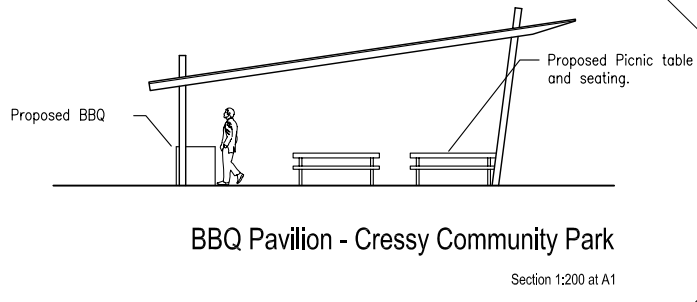
- Assess existing shelter and seating for suitability and longevity. Repair /replace as required.
- Provide shade cloth over playground.
- Provide fence around park for improved safety.
- Provide signage providing information and directions to the Duverney Street / Woody Yalook River precinct.



Woody Yalook River Precinct

Proposed improvements to include:

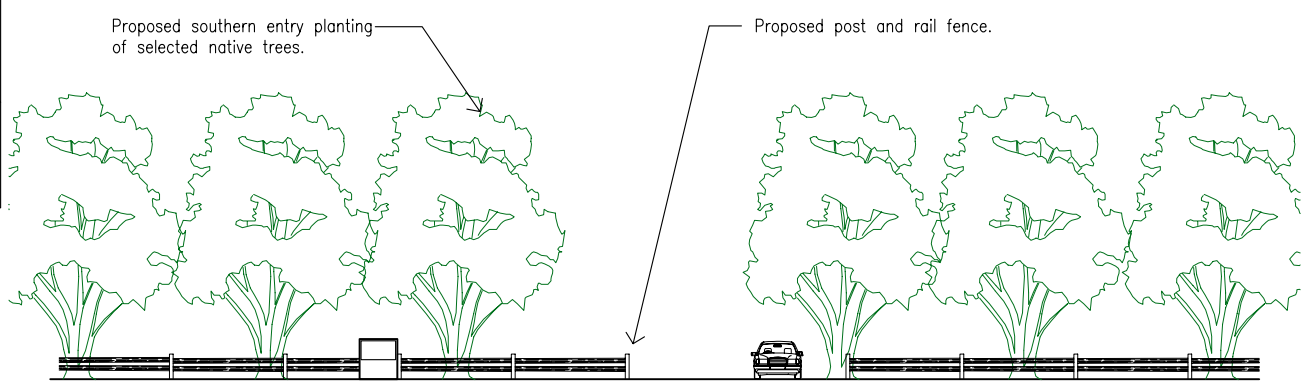
- identification of original road and ford / crossing point - including exposing stones in ford if possible.
- removal of weeds including selected removal of rushes etc.
- in association with local LandCare groups & adjoining landowners re-establish indigenous vegetation along the banks of the Woody Yalook River.



Southern Entry

- Proposed split timber post and rail fence with signage will create a sense of entry for people travelling through the town of Cressy.

- Avenue planting of selected native trees on both sides of Lyons Street with an understory planting of bulbs is proposed to reinforce the sense of entry.



Southern Entry Detail
Section 1:200 at A1

LEGEND

- Existing building
- Property boundaries - developed
- Property boundaries - undeveloped
- Creek / Billabong / River flats
- Existing vegetation
- Proposed indigenous vegetation
- Proposed exotic vegetation
- Powerlines
- Proposed gravel pathway
- Proposed interpretive signage

NOTE:
Township Master Plan and associated urban design development strategies prepared based on public feedback (public meetings held on July 16, 2001 and August 28, 2001) and community response sheets.

Township Master Plan and associated urban design development strategies based on public meeting held on 8 November, 2006 and review of feedback from community response sheets.

Scale: 1:1000 at A1
Drawing No: 0169 -04
Project No: 06145 - 02

Colac Otway
"Naturally Progressive"

2001 Urban Design Framework prepared for the Colac Otway Shire with support from the Department of Infrastructure. Reviewed Urban Design Framework prepared for the Colac Otway Shire.

CRESSY TOWNSHIP REVIEW

Revised Master Plan Details
MAY 2007

TFA Landscape Architects
202 Grant Street
Ballarat Vic 3300
Phone: 5333 5942
Facsimile: 5333 5488
Email: tfa@telconnect.com.au

2007 Reviewed Cressy Township Master Plan Priorities

Community priorities for the development of public land in Cressy

1	Improved drainage throughout the town for efficient and effective stormwater disposal and the development of a regular maintenance plan.
2	Development of low-key footpaths throughout the town to link key points including Yarima Street, Duverney Street, the General Store, the School and New Station Street.
3	Development and restoration of the Avenue of Honour with tree planting and commemoration with a monument proposed to be located at the corner of Tenant Street and Lyons Street.
4	The development of streetscape planting along Lyons Street. This planting is proposed as a children's project, with a monument to identify the youth of Cressy including names, interests, ages etc.
5	Development of strong town entry treatments including landscape treatment (planting & grassing), signage to develop a clear sense of entry into the town.
6	Weed control and clean up of the Woody Yaloak River and original ford to clearly display this important historical element of the communities establishment.
7	Development of additional streetscape planting throughout the town, including some native and some exotic trees.