

Fire Danger Period 2017/18

Prepare your home: Protect your community

Ember attack is caused by burning debris and is the most common way houses catch fire during bushfires.



The information provided here will assist you to undertake the most appropriate measures to prepare your property for the Fire Danger Period.

Get rid of dry grass, leaves, twigs and loose bark. Look for areas where loose materials build up like corners, steps and decks.



Keep grass cut to LESS than 10cm.



Colac Otway Shire is one of the world's most fire prone landscapes. You may already carry out fire safety works on your property, only by working together can we ensure the safety of ourselves and those around us.

On rural properties, a five metre fire break around property boundaries and wildlife corridors is recommended. Council will work with land managers for individual outcomes.



Reducing the fire hazard on your property is only one part of being prepared for a bushfire. A prepared and practiced bushfire survival plan for your whole family is critical.

Keep gutters and roof areas clear of leaf litter and other debris.

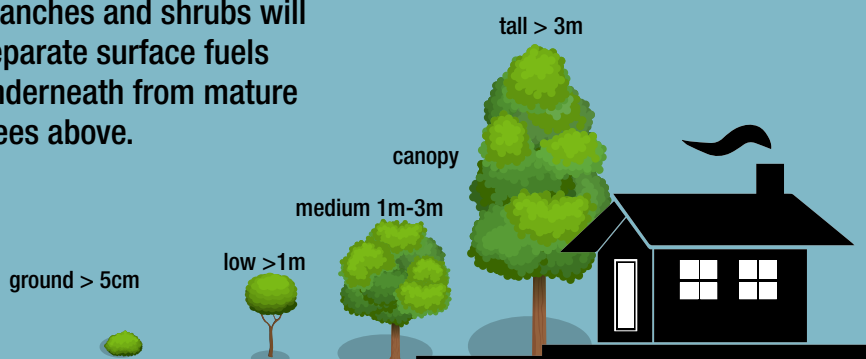


This message has been brought to you by:

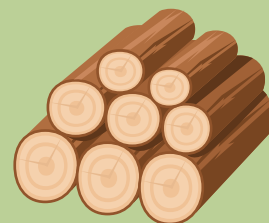
Fire Danger Period 2017/18

Prepare your home: Protect your community

Pruning overhanging tree branches and shrubs will separate surface fuels underneath from mature trees above.



Move woodpiles away from the house. Woodpiles should not be touching any part of the house structure.



Using pebbles or rocks as garden mulch can reduce ember attack during a fire. Windows are the most vulnerable part of a house, consider removing large shrubs.



Consider removing flammable items around and under decks and verandahs such as boxes, matting, furniture and storage.



For the latest information regarding emergency warnings and community information, download the VicEmergency App at the App Store or Google Play.

Information about how to develop a bushfire survival plan for your family can be found on the CFA website at www.cfa.vic.gov.au/plan-prepare/your-bushfire-plan/

Keep an eye out for additional support programs offered as we get closer to the Fire Danger Period including vegetation management advice.

If you would like more information about fire prevention in the Colac Otway Shire, you can visit Council's website at:

www.colacotway.vic.gov.au/My-property/Fire-and-emergencies or call our office during business hours on 03 5232 9400.