



Colac Otway
SHIRE

Community meeting

Federal Boundary Redistribution





Welcome



Agenda

- Overview of the proposed boundary changes
- A possible solution?
- Questions/comments from the floor



Crunching the numbers

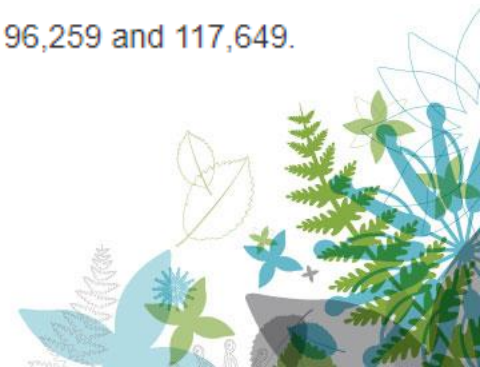
- When considering each federal electorate
- Each electorate must have

as far as practicable, the number of electors enrolled in each electoral division in Victoria at the projection time would not be more than plus 3.5 per cent, or less than minus 3.5 per cent, of the [projected enrolment quota](#) (paragraph 73(4)(a) of the Electoral Act)

- As far as practicable, the number of electors enrolled in each electoral division in Victoria at the projection time of Sunday 25 August 2019 must be between 106,509 and 114,235.

the number of electors enrolled in each electoral division in Victoria would not be more than plus 10 per cent, or less than minus 10 per cent, of the [current enrolment quota](#) (sub-section 73(4) of the Electoral Act)

- The number of electors enrolled in each electoral division in Victoria must be between 96,259 and 117,649.



Boundary changes

- What criteria can the Australian Electoral Commission consider?

A Redistribution Committee must develop a set of proposals for dividing each state or territory into a number of electoral divisions equal to its entitlement in the House of Representatives. In developing its proposals, the Redistribution Committee must remain within the numerical quotas for the current and projected enrolment. The Redistribution Committee shall also give due consideration to:

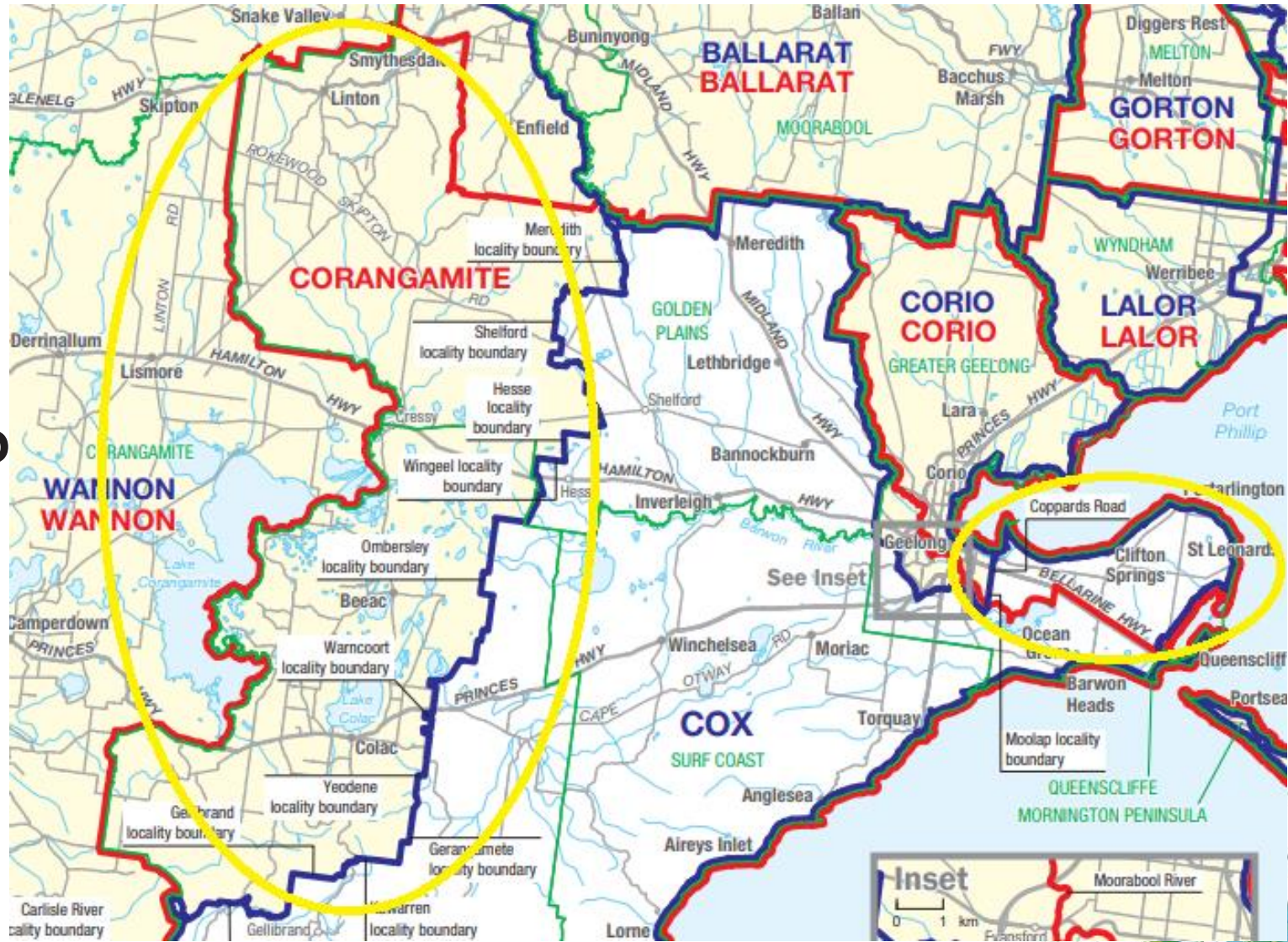
- community interests within the proposed electoral division, including economic, social and regional interests
- means of communication and travel within the proposed electoral division
- physical features and area of the proposed electoral division, and
- existing boundaries of divisions in the state or territory.



Current map of the seat Corangamite



Where is the change?





A possible solution?



Setting the Voter Number for each Electoral Division

Enrolment quota at the projection time set by the Electoral Commission as of 25 August 2019:

- Maximum number of electors 114,235
- Minimum number of electors 106,509



Challenges for AEC

- i. Victoria's population increase indicates an increase in House of Representative seats from 37 to 38 requiring a redistribution.
- ii. Number of electors in Division of Cox (existing Corangamite) are above the maximum number of projected electors permitted, requiring a reduction of at least 5,593 electors, or up to 13,319 electors.
- iii. Number of electors in Division of Wannon below minimum
 - Gain required of at least 6,447 electors, up to 14,173 electors.
- iv. Number of electors in Division of Mallee below minimum
 - Gain required of at least 6,635 electors, up to 14,361 electors.



Proposed AEC changes to Division of Cox

- i. Transfer 14,918 electors from the western part of Golden Plains and northern part of Colac Otway Shire to Wannon.
- ii. Transfer from Corio 29,848 electors in Moolap and all localities east on the Bellarine Peninsula to Cox.
- iii. To balance ii., transfer from existing Division of Corangamite 25,553 electors in the localities of Batesford, Belmont, Fyansford, Highton and Wandana Heights to Corio.



Alternative Proposal for Division of Cox

- i. Include Colac and Colac region within the proposed Division of Cox, retaining all of Colac Otway Shire in the Division.
+ 12,041 electors
- ii. Retain the localities of Newcomb-Moolap proposed to be transferred to the Division of Cox within Corio.
- 1,234 electors
- iii. Transfer to the Division of Wannon the localities of Bannockburn and Golden Plains – south from Cox. Proposed northern boundary of Cox to be the Hamilton Highway.
- 9,045 electors
- iv. A net reduction of electors is required in Cox of at least 5,593 electors or up to 13,319 electors.



Summary of Outcomes

- i.
 - Maximum number of electors 114,235
 - Minimum number of electors 106,509
- ii. Alternative Proposal for Division of Cox 110,967 electors
- iii. Alternative Proposal for Division of Wannon 109,761 electors
- iv. Alternative Proposal for Division of Corio 110,737 electors



Proposal for the new seat of 'Cox'





Colac Otway
SHIRE

Questions/Comments

