

Dear Resident/Business Owner,

On Sunday 17 September, more than 5,500 bike riders and their families and friends will visit the region of the Great Ocean Road and Otway Ranges as part of the annual Wiggle Amy's Gran Fondo.

Now in its seven edition, the event is held in memory of Australian cycling team member Amy Gillett, who tragically lost her life in a training ride in Germany in 2005 when hit by a car.

The Amy Gillett Foundation aims to reduce the incidence of death and injury of all bike riders through safety awareness and education with a mission of safe cycling for all Australians and a vision of zero bicycle rider fatalities.

We are committed to supporting the local community, with the weekend of activities bringing significant economic benefit of approximately \$5 million to the Colac Otway Shire region every year through accommodation, meals and indirect exposure to the area.

All proceeds and fundraising associated with the event will be re-directed back into cycling safety research, advocacy and educational campaigns and programs.

This letter contains the details of the planned road closures for the 2017 events. We are committed to working with the community to ensure we minimize the disruptions to residents and businesses.

NEW IN 2017

There are several new changes to the Wiggle Amy's Gran Fondo event in 2017 to take note of, including;

1. Gravel Fondo Course of 65km - Sunday 17 September
This year will see the start of an off-road ride taking place in Apollo Bay. The table overleaf shows the road closures and traffic treatments that will take place in Apollo Bay and along the course.

2. Apollo Bay Family Fondo Course of 14km - Sunday 17 September
In 2017 the event will start and finish in Apollo Bay following the route of the Gravel Fondo resulting in the same road closures; get your family together and take part in this great event. Colac Otway Shire residents receive 50% off entry.

NEW IN 2017 (cont.)

3. Cyclocross Apollo Bay - Saturday 16 September
Cyclocross racing will hit the Apollo Bay foreshore on Saturday afternoon with this new inclusion to the Victorian CX Series (this event will not have any road closures)

TRAFFIC HOTLINE

For information and advice during the event, a traffic hotline will operate at the following times:

- Friday 15 September between 9:00am and 5:00pm
- Saturday 16 September between 9:00am and 8:00pm
- Sunday 17 September between 5:30am and 4:30pm

The contact for the traffic hotline is **0448 813 433**

The contact email for any traffic concerns is - **operations@sme360.com.au**

For all other enquires please head to - **www.amysgranfondo.org.au**

EMERGENCY ACCESS

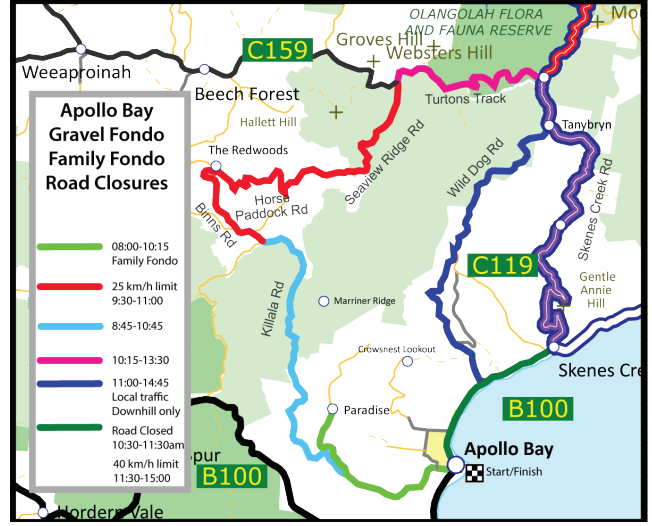
Emergency access will be maintained at all times. In an emergency please call 000.

PUBLIC TRANSPORT

The V-Line Apollo Bay to Geelong bus service will run as normal on this day.

NEW GRAVEL FONDO

The Gravel Fondo event will be conducted under some closed roads and speed reductions; Please see the below map for more details.



NEW ROAD CLOSURE INFORMATION

TO THE HOUSEHOLDER/BUSINESS OWNER

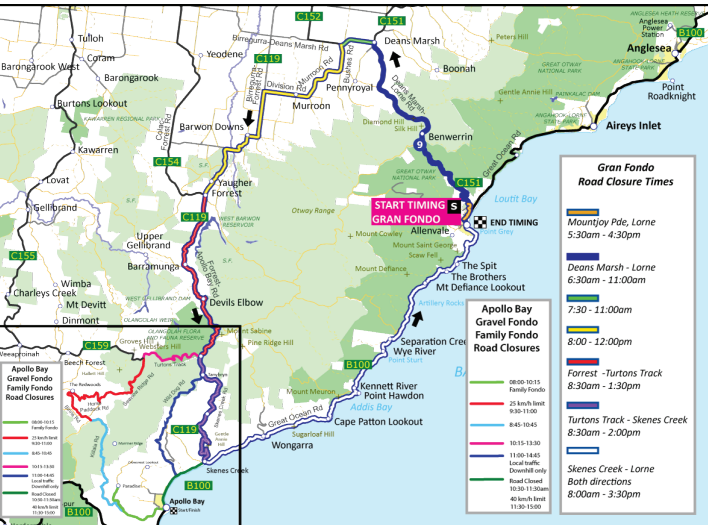
IMPORTANT COMMUNITY INFORMATION

SUNDAY 17th SEPTEMBER, 2017

wiggle
Amy's Gran Fondo
THE GREAT OCEAN RIDE

amysgranfondo.org.au

Sunday Road Closures Map Visit the website to download high quality version of the road closure map.



ROAD CLOSURES

To ensure the safety of all event participants and the community temporary changes to traffic conditions must be implemented. Appropriate traffic control measures as approved by Victoria Police, Vic Roads and relevant council authority will be temporarily installed on all intersections and access points to private property that provide vehicle access onto the course. Minor roads, residential and business driveways adjoining the course will be closed progressively from dawn on the morning of the event.

VOLUNTEERING AT EVENT

Join the volunteers who contribute to making this event a success. With a financial incentive for each volunteer of \$50 per shift, this represents a great fundraising opportunity for local community groups. To sign-up as a volunteer simply visit www.amysgranfondo.org.au/volunteer or send an email to marshals@sme360.com.au to register your group's interest.

LOCAL ACCESS/APPROVED MOVEMENTS

Skenes Creek and Forrest
Some residents of Skenes Creek and Forrest will be able to cross the course under the direction of Victoria Police or event operations staff for the duration of the closure at the following locations:
- Properties accessed along or off Old Coach Road, Skenes Creek can access by approaching the Great Ocean Road from Apollo Bay prior to 9.00am and after 11.00am; and
- Residents can cross over (but not turn into) Birregurra Forrest Road using Colac Forrest Road and Henry Street.

Beech Forrest

The section of Skenes Creek Road between the Great Ocean Road and Beech Forrest Road will be accessible to local traffic only prior to 8.30am.

Apollo Bay

Detour prior to 10:30am use Great Ocean Road and cross course at Hardy St. After 10:30am detour around Apollo Bay via Pascoe St, Murray St, McLachlan St, Cawood St, Casino Ave.
Detour via Hardy St around the Great Ocean Road closure from 10:30am – 11:30am

Pennyroyal Valley Road Deans Marsh

Properties on Pennyroyal Valley Road can gain access via the Deans Marsh General Store when safe to do so and under the direction of Victoria Police and authorised

50% DISCOUNT ON AMY'S FAMILY FONDO ENTRY

All local Surf Coast and Colac Otway Shire residents are eligible for a 50% discount for the 14km Amy's Family Fondo. This ride allows you to complete the 14km section of fully closed roads from Apollo Bay to Paradise Picnic Reserve, catering for all ages and level of riders. You can register online until Friday 15 September at www.amysgranfondo.org.au or at the Apollo Bay Event Village on Sunday 17 September from 7am.

THE FOLLOWING ROAD CLOSURES APPLY

| Sunday 17 th September 2017 | | |
|--|--|-------------------|
| Road | Location / Closure | Approx. Times |
| Mountjoy Parade, Lorne | Between Otway St & Grove Road | 5:30am – 10am |
| Mountjoy Parade, Lorne | Between Grove Rd & Bay St | 5:30am – 4:30pm |
| Deans Marsh-Lorne Road | Between Great Ocean Road & Neade St, Lorne | 6am – 10am |
| Deans Marsh-Lorne Road - Otway St | Between Deans Marsh Road and Otway St | 7am - 10am* |
| Deans Marsh-Lorne Road | Between Birregurra – Deans Marsh Rd & Neade St Lorne | 6am – 11am |
| Birregurra – Deans Marsh Road | Between Bushes Rd & Deans Marsh – Lorne Rd | 7:30am – 11am |
| Bushes Road, Deans Marsh | Between Pennyroyal Station Road & Birregurra –Deans Marsh Road | 8am – 12pm |
| Pennyroyal Station Road, Deans Marsh | Between Murroon Road & Bushes Road | 8am – 12pm |
| Murroon Road, Barwon Downs | Between Division Road & Pennyroyal Station Road | 8am – 12pm |
| Division Road, Barwon Downs | Between Birregurra – Forrest Road & Murroon Rd | 8am – 12pm |
| Birregurra – Forrest Road | Between Colac Forrest Road & Division Road | 8am – 12pm |
| Forrest– Apollo Bay Road | Between Beech Forest Road (Turtons Track) & Colac Forrest Road | 8:30am – 1:30pm |
| Skenes Creek Road | Between Great Ocean Road & Beech Forest Road (Turtons Track) | 8:30am – 2pm |
| Great Ocean Road (both directions) | Between Skenes Creek Road, Skenes Creek & Bay St, Lorne | 8am – 3:30pm |
| Medio Fondo, Gravel Fondo and Apollo Bay Family Fondo (Sunday 17 th September 2017) | | |
| Great Ocean Road, Apollo Bay | Between Hardy St, Apollo Bay & Skenes Creek Road, Skenes Creek | 10:30am – 11:30am |
| Pascoe St, Cartwright St, Gambier St, Apollo Bay | Between Hardy St & Barham River Rd | 8am – 10:15am |
| Barham River Rd, Apollo Bay | Between Apollo Bay & Barham River Road | 8am – 10:15am |
| Killala Rd, Apollo Bay | Between Killala Rd & Old Bay Rd | 8:45am – 10:45am |
| Binns Rd (25km/h speed reduction) | Between Binns Rd & Turtons Track | 9:30am – 11:00am |
| Turtons Track | Between Turtons Track & Skenes Creek Rd | 10:15am – 1:30pm |
| Wild Dog Road (Local traffic only allowed to travel southbound – No left turn from Great Ocean Road) | Between Skenes Creek Rd & Great Ocean Rd | 11:00am – 2:45pm |

DIVERSION ROUTE & KEY ACCESS POINTS

The principle diversion route both east and west bound avoiding the Great Ocean Road is via the Princes Highway through Winchelsea to Colac, then the C155 from Colac through Gellibrand to Lavers Hill and vice-versa. The key access points in and out of the area during the closure periods for local traffic are:

| | |
|----------------------------------|---|
| Lorne | Use the Great Ocean Road to/from Anglesea |
| Apollo Bay / Skenes Creek | Use the Great Ocean Road to/from Lavers Hill |
| Forrest | Use the Colac – Forrest Road to/from Colac |
| Deans Marsh | Use the Princes Highway via either Birregurra or Winchelsea |

EVENT PARTNERS

wiggle CUMBERLAND LORNE Carman's Europcar CYCLINGTIPS

EVENT SUPPLIERS

Amy's Velo Laerdal NATURALLY OTWAY gofundraiser JCDcaux whol@women SUB4

GOVERNMENT PARTNERS COMMUNITY PARTNERS EVENT DELIVERY PARTNERS

Surf Coast Shire Colac Otway GEELONG SME360 UWCT VTWO

Through traffic will have immediate access at the conclusion of the closure time however local traffic may be impacted longer whilst the treatments to minor roads, residential and business driveways are removed.